

joyous PICNIC



FUSIONS

by AGF

FREE PATTERN

XXXXXXXXXXXXXXXXXXXXXXXXXXXX

Joyous PICNIC

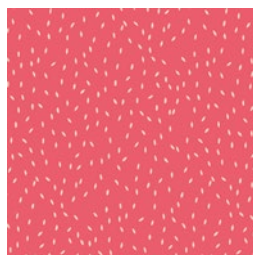
QUILT DESIGNED BY AGF STUDIO AGFstudio

PRINTEMPS FUSION

FABRICS DESIGNED BY AGF STUDIO



FUS-P-1200
PAINTED DESERT PRINTEMPS



FUS-P-1201
SCATTER PRINTEMPS



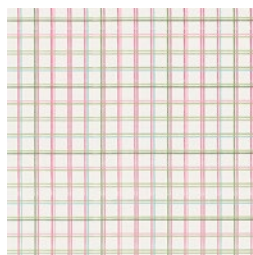
FUS-P-1202
LUMINOUS FIELD PRINTEMPS



FUS-P-1203
FRESHLY PICKED PRINTEMPS



FUS-P-1204
FIETSEN PRINTEMPS



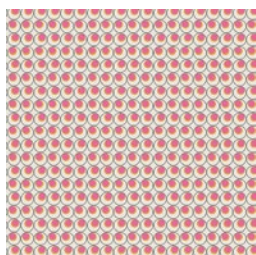
FUS-P-1205
PLAID BEAT PRINTEMPS



FUS-P-1206
LIBRARY GARDENS PRINTEMPS



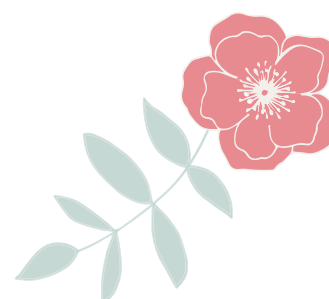
FUS-P-1207
PERENNIAL PRINTEMPS



FUS-P-1208
ROUNDED SEEDS PRINTEMPS



FUS-P-1209
MAGNOLIA PRINTEMPS



FEEL THE DIFFERENCE © 2017 Courtesy of Art Gallery Quilts LLC. All Rights Reserved.

FABRIC REQUIREMENTS

| | | |
|-----------------|------------|---------------------|
| Fabric A | FUS-P-1208 | $\frac{7}{8}$ yd. |
| Fabric B | FUS-P-1209 | $\frac{1}{3}$ yd. |
| Fabric C | FUS-P-1200 | $\frac{1}{3}$ yd. |
| Fabric D | FUS-P-1205 | $\frac{3}{8}$ yd. |
| Fabric E | FUS-P-1207 | $\frac{1}{3}$ yd. |
| Fabric F | FUS-P-1201 | $\frac{1}{3}$ yd. |
| Fabric G | FUS-P-1203 | $\frac{1}{4}$ yd. |
| Fabric H | DEN-S-2002 | 1 $\frac{7}{8}$ yd. |
| Fabric I | PE-408 | 1 $\frac{3}{8}$ yd. |
| Fabric J | PE-421 | $\frac{3}{8}$ yd. |
| Fabric K | PE-452 | $\frac{3}{8}$ yd. |

BINDING FABRIC

Fabric **A** FUS-P-1208 (Included)

BACKING FABRIC

FUS-P-1205 (Recommended) 5 $\frac{1}{2}$ yds.

CUTTING DIRECTIONS

$\frac{1}{4}$ " seam allowances are included.
WOF means width of fabric.

- Seven (7) 4 $\frac{1}{2}$ " x 10 $\frac{1}{2}$ " rectangles from fabrics **A**
- Three (3) 2 $\frac{1}{2}$ " x 10 $\frac{1}{2}$ " rectangles from fabric **A, D, G**
- Six (6) 4 $\frac{1}{2}$ " x 10 $\frac{1}{2}$ " rectangles from fabric **B**
- Seven (7) 4 $\frac{1}{2}$ " x 10 $\frac{1}{2}$ " rectangles from fabric **C, D, F**
- Five (5) 4 $\frac{1}{2}$ " x 10 $\frac{1}{2}$ " rectangles from fabric **E**
- Three (3) 4 $\frac{1}{2}$ " x 10 $\frac{1}{2}$ " rectangles from fabric **G, J, K**
- Sixteen (16) 10 $\frac{1}{2}$ " perfect squares from fabric **H**
- Twelve (12) 10 $\frac{1}{2}$ " perfect squares from fabric **I**
- Eight (8) 4 $\frac{1}{2}$ " x 10 $\frac{1}{2}$ " rectangles from fabric **I**
- Eight (8) 2 $\frac{1}{2}$ x 10 $\frac{1}{2}$ " rectangles from fabric **J**
- Five (5) 2 $\frac{1}{2}$ " x 10 $\frac{1}{2}$ " rectangles from fabric **K**

CONSTRUCTION

Sew all rights sides together with $\frac{1}{4}$ " seam allowance.

- Take an 4" x 10 $\frac{1}{2}$ " rectangle from Fabric **A**, an 2 $\frac{1}{2}$ " x 10 $\frac{1}{2}$ " rectangle from Fabric **I**, and an 4 $\frac{1}{2}$ " x 10 $\frac{1}{2}$ " rectangle from Fabric **B**.
- Pair the three pieces together in the following order: **A-I-B**.
- Set aside
- Repeat the previous process but for the following fabrics (Diagram Below)

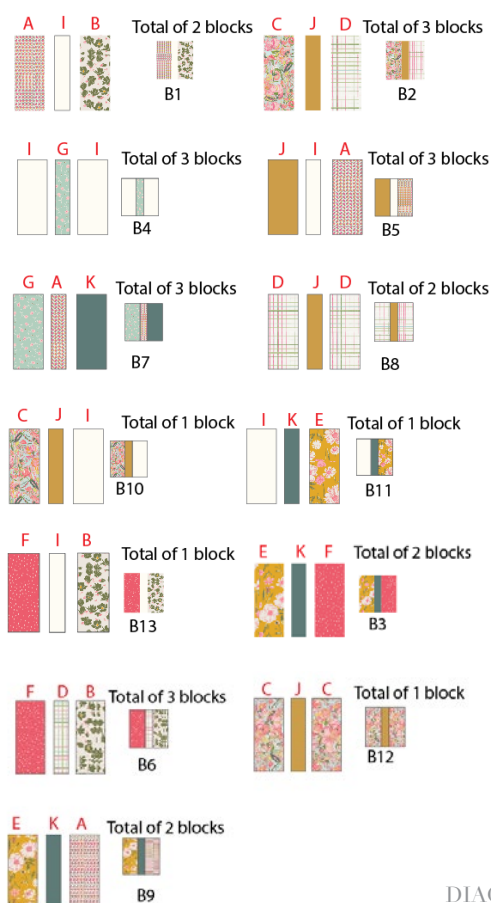


DIAGRAM 1

TOP ASSEMBLY

$\frac{1}{4}$ " seam allowances are included.
WOF means width of fabric.

- Assemble each row as diagram below:

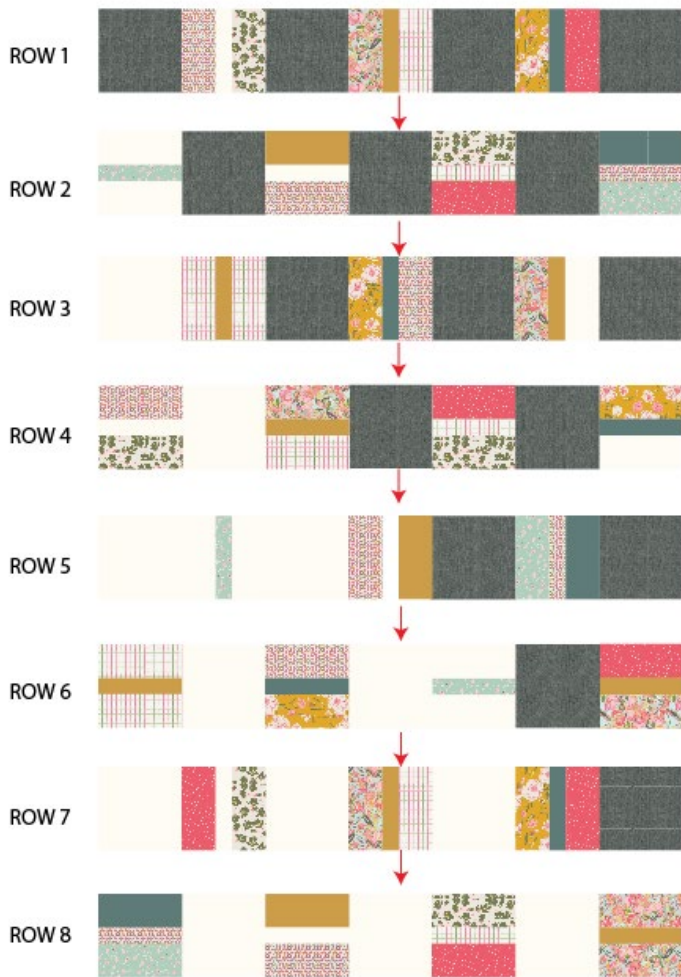


DIAGRAM 2

QUILT ASSEMBLY

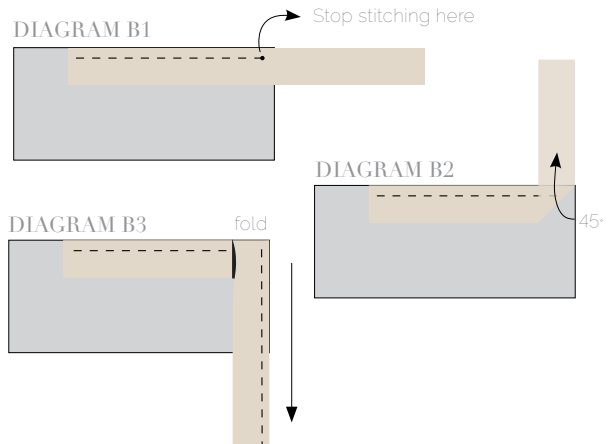
Sew rights sides together.

- Place BACKING FABRIC on a large surface wrong side up. Stretch it with masking tape against that surface.
- Place BATTING on top of backing fabric.
- Place TOP on top of the batting with right side facing up. Smooth away wrinkles using your hands.
- Pin all layers together and baste with basting thread, using long stitches. You can also use safety pins to join the layers.
- Machine or hand quilt starting at the center and working towards the corners. Remember that quilting motifs are a matter of personal preference. Have fun choosing yours!
- After you finished, trim excess of any fabric or batting, squaring the quilt to proceed to bind it.

BINDING

Sew rights sides together.

- Cut enough strips $1\frac{1}{2}$ ' wide by the width of the fabric **A** to make a final strip 310' long. Start sewing the binding strip in the middle of one of the sides of the quilt, placing the strip right side down and leaving an approximated 5' tail. Sew with $\frac{1}{4}$ ' seam allowance (using straight stitch), aligning the strip's raw edge with the quilt top's raw edge.
- Stop stitching $\frac{1}{4}$ ' before the edge of the quilt (**DIAGRAM B 1**). Clip the threads. Remove the quilt from under the machine presser foot. Fold the strip in a motion of 45° and upward, pressing with your fingers (**DIAGRAM B 2**). Hold this fold with your finger, bring the strip down in line with the next edge, making a horizontal fold that aligns with the top edge of the quilt (**DIAGRAM B 3**). Start sewing at $\frac{1}{4}$ ' of the border, stitching all the layers. Do the same in the four corners of the quilt.
- Stop stitching before you reach the last 5 or 6 inches. Cut the threads and remove the quilt from under the machine presser foot. Lay the loose ends of the binding flat along the quilt edge, folding the ends back on themselves where they meet. Press them together to form a crease. Using this crease as the stitching line, sew the two open ends of the binding with right sides together (you can help yourself marking with a pencil if the crease is difficult to see).
- Trim seam to $\frac{1}{4}$ ' and press open. Complete the sewing. Turn binding to back of the quilt, turn raw edge inside and stitch by hand using blind stitch.





artgalleryfabrics.com

NOTE: While all possible care has been taken to ensure the accuracy of this pattern, We are not responsible for printing errors or the way in which individual work varies.

Please read instructions carefully before starting the construction of this quilt. If desired, wash and iron your fabrics before starting to cut.

© 2018 Courtesy of Art Gallery Quilts LLC. All Rights Reserved.