

featuring DOLL HOUSE COLLECTION BY AMY SINIBALDI

X
X
X
X
X
X
X
X
X
X
X
X
X
X
X

UPSTAIRS,
DOWNSTAIRS



ANGLES

FREE PATTERN

XXXXXXXXXXXXXXXXXXXXXXXXXXXX

A DIVISION OF AGF



UPSTAIRS,
DOWNSTAIRS

AMYSINIBALDI

QUILT DESIGNED BY AMY SINIBALDI

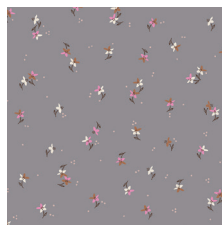


FABRICS DESIGNED BY AMY SINIBALDI

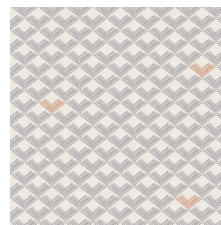
PLAY DATE



DHS-1080
TIPTOE FROLIC



DHS-1081
WALTZ MOONLIT



DHS-1082
ROOFTILES SLATE



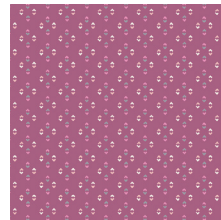
DHS-1083
FLUTTERDUST STARRY



DHS-1084
JOLIE PETAL



DHS-1085
MEADOW FIELD



DHS-1086
LUCY MAUVE



DHS-1087
PRAIRIE DOT FRESH

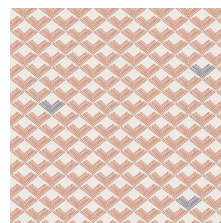
TEA TIME



DHS-2080
TIPTOE DUSK



DHS-2081
WALTZ SUNLIT



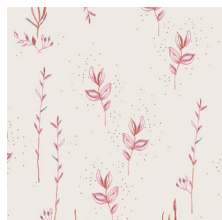
DHS-2082
ROOFTILES CLAY



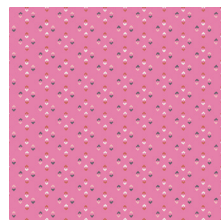
DHS-2083
FLUTTERDUST HAZE



DHS-2084
JOLIE FRESH



DHS-2085
MEADOW POSY



DHS-2086
LUCY ROSE



DHS-2087
PRAIRIE DOT SERENE




**UPSTAIRS,
DOWNSTAIRS**



FINISHED SIZE | 72" x 84"

FABRIC REQUIREMENTS

Fabric A	DHS-1080	1/3 yd.
Fabric B	DHS-1081	1 yd.
Fabric C	DHS-1082	1/3 yd.
Fabric D	DHS-1083	2/3 yd.
Fabric E	DHS-1084	2/3 yd.
Fabric F	DHS-1085	1/4 yd.
Fabric G	DHS-1086	1/2 yd.
Fabric H	DHS-1087	3/4 yd.
Fabric I	DHS-2080	1 1/2 yd.
Fabric J	DHS-2081	1/3 yd.
Fabric K	DHS-2082	1/8 yd.
Fabric L	DHS-2083	1/3 yd.
Fabric M	DHS-2084	1 1/8 yd.
Fabric N	DHS-2085	1/2 yd.
Fabric O	DHS-2086	2/3 yd.
Fabric P	DHS-2087	1/3 yd.

BACKING FABRIC

6 yds. Fabric **K** (*Suggested*)

BINDING FABRIC

1/2 yd. Fabric **I** (*included*)

XX

Twenty seven (27) 4 1/2" perfect squares from Fabrics **E**

Eight (8) 4 1/2" perfect squares from Fabrics **F**

Twenty four (24) 4 1/2" perfect squares from Fabrics **G**

Thirty four (34) 4 1/2" perfect squares from Fabrics **H**

Fifty (50) 4 1/2" perfect squares from Fabrics **I**

Fourteen (14) 4 1/2" perfect squares from Fabrics **J**

One (1) 4 1/2" perfect squares from Fabrics **K**

Eleven (11) 4 1/2" perfect squares from Fabrics **L**

Sisty (60) 4 1/2" perfect squares from Fabrics **M**

Seventeen (17) 4 1/2" perfect squares from Fabrics **N**

Twenty Eight (28) 4 1/2" perfect squares from Fabrics **O**

Twelve (12) 4 1/2" perfect squares from Fabrics **P**

CONSTRUCTION

Sew all rights sides together with 1/4" seam allowance.

- Follow diagram below for the square arrangements.
- Sew in rows, pressing seams in one direction for the entire row.
- Press seams in the alternate direction when sewing each consecutive row
- Sew rows together as diagram below

CUTTING DIRECTIONS

*1/4" seam allowances are included.
WOF means width of fabric.*

Fifteen (15) 4 1/2" perfect squares from Fabrics **A**

Forty one (41) 4 1/2" perfect squares from Fabrics **B**

Nine (9) 4 1/2" perfect squares from Fabrics **C**

Twenty seven (27) 4 1/2" perfect squares from Fabrics **D**

QUILT ASSEMBLY

- Cut Backing Fabric into 2 equal rectangles, each 2 ¼ yd. x WOF. Trim off selvage edges and sew them together along this lengthwise edge, right sides together. Press open the seam.
- Place BACKING FABRIC on a large surface wrong side up. Stretch it with masking tape against that surface.
- Place BATTING on top of backing fabric.
- Place TOP on top of the batting with right side facing up. Smooth away wrinkles using your hands.
- Pin all layers together and baste with basting thread, using long stitches. You can also use safety pins to join the layers.
- Machine or hand quilt starting at the center and working towards the corners. Remember that quilting motifs are a matter of personal preference. Have fun choosing yours!
- After you finished, trim excess of any fabric or batting, squaring the quilt to proceed to bind it.

BINDING

Sew rights sides together.

- Sew your 8 WOF binding strips together to make a final strip 322' long. Start sewing the binding strip in the middle of one of the sides of the quilt, placing the strip right side down and leaving an approximated 5' tail. Sew with ¼" seam allowance (using straight stitch), aligning the strip's raw edge with the quilt top's raw edge.
- Stop stitching ¼' before the edge of the quilt (**DIAGRAM B 1**). Clip the threads. Remove the quilt from under the machine presser foot. Fold the strip in a motion of 45° and upward, pressing with your fingers (**DIAGRAM B2**). Hold this fold with your finger, bring the strip down in line with the next edge, making a horizontal fold that aligns with the top edge of the quilt (**DIAGRAM B3**). Start sewing at ¼' of the border, stitching all the layers. Do the same in the four corners of the quilt.

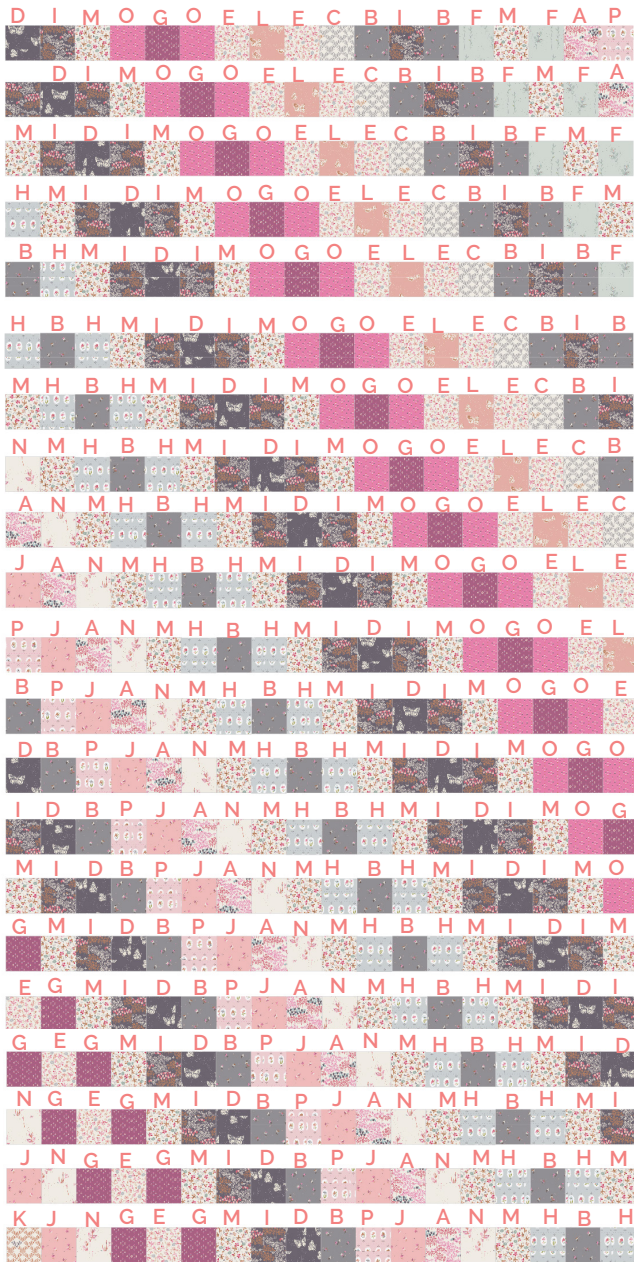
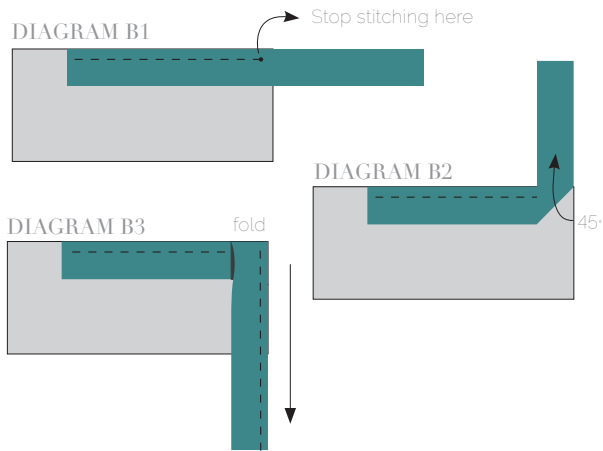


DIAGRAM 1

- Quilt as desired

- Stop stitching before you reach the last 5 or 6 inches. Cut the threads and remove the quilt from under the machine presser foot. Lay the loose ends of the binding flat along the quilt edge, folding the ends back on themselves where they meet. Press them together to form a crease. Using this crease as the stitching line, sew the two open ends of the binding with right sides together (you can help yourself marking with a pencil if the crease is difficult to see).
- Trim seam to ¼" and press open. Complete the sewing. Turn binding to back of the quilt, turn raw edge inside and stitch by hand using blind stitch.
- Congrats! You've finished your beautiful Quilt!



artgalleryfabrics.com

NOTE: While all possible care has been taken to ensure the accuracy of this pattern, We are not responsible for printing errors or the way in which individual work varies. Please read instructions carefully before starting the construction of this quilt. If desired, wash and iron your fabrics before starting to cut.

© 2017 Courtesy of Art Gallery Quilts LLC. All Rights Reserved.