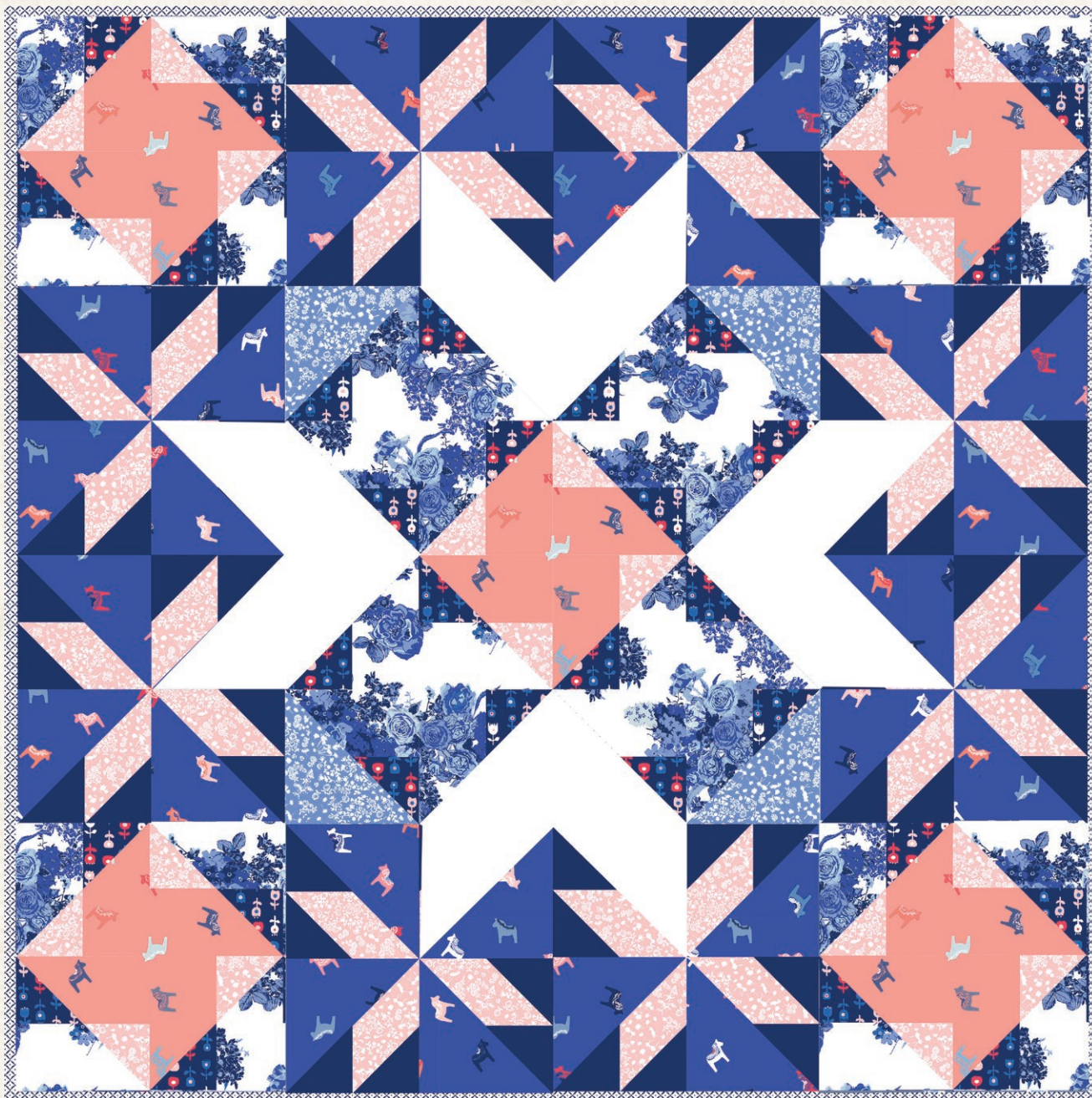
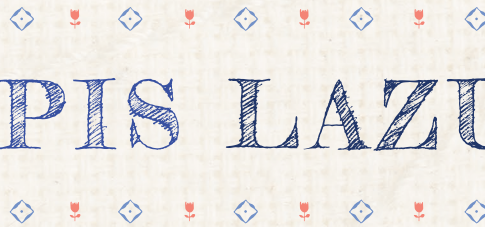




# LAPIS LAZULI



FREE PATTERN



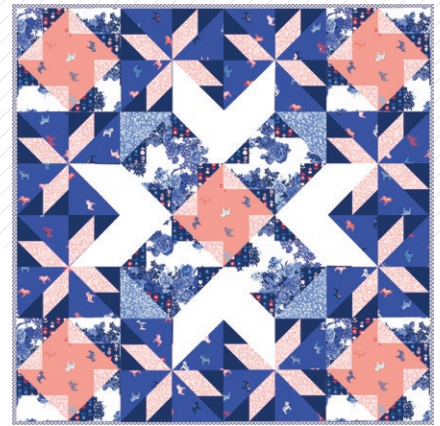


# LAPIS LAZULI

*Katarina Roccella*

QUILT DESIGNED BY KATARINA ROCCELLA

**IN**blue



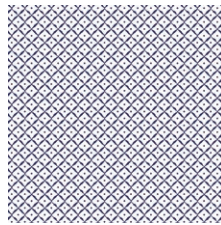
COLOR OPTION

FABRICS DESIGNED BY KATARINA ROCCELLA

AZUUR STERK



INB-26630  
INTERPLAY ECLECTIC



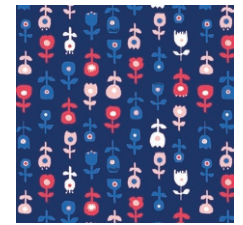
INB-26631  
CHINOISERIE WIT



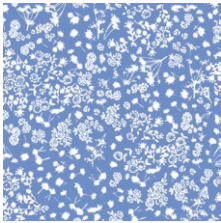
INB-26632  
HEXESIS LAZULI



INB-26634  
FLY AWAY VROEG



INB-26635  
DE ROOS DONKER



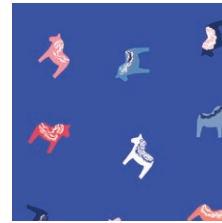
INB-26636  
WEIDE IN BLUE



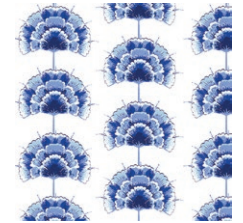
INB-26637  
FIETSEN DAWN



INB-26638  
BLOESEM ROYAL



INB-26639  
DALASTERK

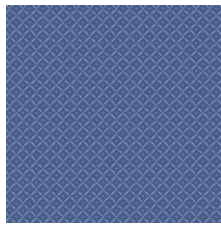


INB-26640  
BLAU BLOEM

AZUUR ZOET



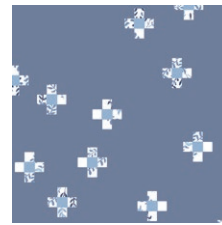
INB-36630  
INTERPLAY CALM



INB-36631  
CHINOISERIE KOBALT



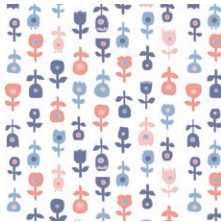
INB-36632  
HEXESIS CADMIUM



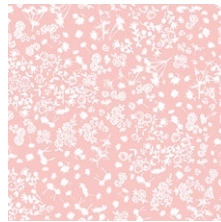
INB-36633  
DELFTGELS



INB-36634  
FLY AWAY LAET



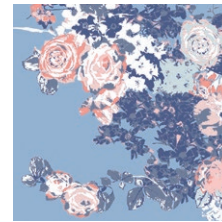
INB-36635  
DE ROOS LICHT



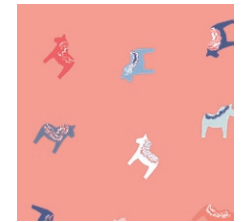
INB-36636  
WEIDE IN ROSE



INB-36637  
FIETSEN DUSK



INB-36638  
BLOESEM SWEET



INB-36639  
DALAZOET



# LAPIS LAZULI

FINISHED SIZE | 66 ½" x 66 ½"

## FABRIC REQUIREMENTS

Fabric <b>A</b>	INB-26631	¾ yd.
Fabric <b>B</b>	INB-26635	⅝ yd.
Fabric <b>C</b>	INB-26636	⅓ yd.
Fabric <b>D</b>	INB-26638	1 ¼ yd.
Fabric <b>E</b>	INB-26639	1 ⅝ yd.
Fabric <b>F</b>	INB-36636	1 ⅝ yd.
Fabric <b>G</b>	INB-36639	¾ yd.
Fabric <b>H</b>	PE-428	1 ⅝ yd.
Fabric <b>I</b>	PE-433	¾ yd.

### BACKING FABRIC

INB-36638- 4 yds. *(Suggested)*

### BINDING FABRIC

INB-26631 (Fabric **A**) *(included)*

## CUTTING DIRECTIONS

¼" seam allowances are included.  
WOF means width of fabric.

Seven (7) 2 ¼" x WOF" strips from Fabric **A** for binding

Thirty two (32) 5" x 5" squares from Fabric **B**

Two (2) 9 ½" x 9 ½" squares from Fabric **C**- cut diagonally to obtain 4 (four) triangles

Thirty two (32) 5" x 9 ½" rectangles from Fabric **D**

Fourteen (14) 9 ½" x 9 ½" squares from Fabric **E**- cut diagonally to obtain 28 (twenty eight) triangles

Twenty (20) 5 ½" x 5 ½" squares from Fabric **F**

Twenty eight (28) 5" x 9 ½" rectangles from Fabric **F**

Twenty (20) 4 ½" x 9 ½" rectangles from Fabric **G**

Fifty six (56) 5" x 5" squares from Fabric **H**

Eight (8) 9 ½" x 9 ½" squares from Fabric **I**- cut diagonally to obtain 16 (sixteen) triangles

## CONSTRUCTION

*Sew all rights sides together with ¼" seam allowance.*

### Making the STRIP sets:

**Strip set 1: is composed of fabrics B and D: make 32**

- Place the 5" x 5" square of the fabric **B** on the 5" x 9 ½" rectangle of the fabric **D**, right sides together and sew them together as shown on the diagram.
- Press seam either open or to one side, upon your preferences. Pressing the seams open eliminates bulk and makes it easier to match the seams.
- Cut it on the 45 degrees, as shown in diagram, placing ruler so that it goes through the center, meeting both outer corners, making sure that it measures 9 ½" x 9 ½" (bottom and left side).

**Strip set 2: is composed of fabrics F and G: make 20**

- Place the 5 ½" x 5 ½" square of the fabric **F** on the 4 ½" x 9 ½" rectangle of the fabric **G**, right sides together and sew them together as shown on the diagram. Press seams.
- Cut it on the 45 degrees, as shown in diagram, placing ruler so that it goes through the center, meeting both outer corners, making sure that it measures 9 ½" x 9 ½" (bottom and left side).

**Strip set 3: is composed of fabrics H and F: make 28**

- Place the 5" x 5" square of the fabric **H** on the 5" x 9 ½" rectangle of the fabric **F**, right sides together and sew them together as shown on the diagram.
- Press seams. Cut it on the 45 degrees, as shown in diagram, placing ruler so that it goes through the center, meeting both outer corners, making sure that it measures 9 ½" x 9 ½" (bottom and left side).
- Place another 5" x 5" square of fabric **H** on the left side of the trimmed triangle **HF**, right sides together. It's very important that the left and bottom sides are aligned and that the upper side of the square **H** is laying ¼" above the seam allowance of the trimmed triangle **HF**. Draw the line diagonally starting from the bottom right corner to the top left corner. Sew through the drawn line. Trim seam allowance to ¼". Press seams. Trim block so that it measures 8 ¾" x 8 ¾".







ASSEMBLING THE TOP

