



POPSICLE BAR



AGF
LIMITED
edition





DANA WILLARD

QUILT DESIGNED BY DANA WILLARD



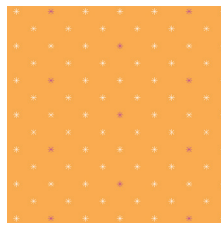
COLOR OPTION

Boardwalk Delight

FABRICS DESIGNED BY DANA WILLARD



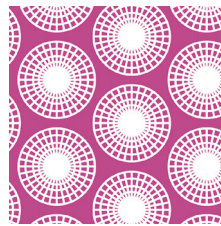
BWD-780
FLAVOR OF THE DAY



BWD-781
TWINKLE LIGHTS



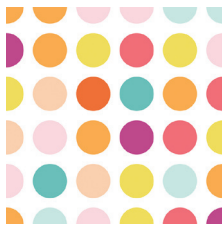
BWD-782
ICE CREAM SHOP



BWD-783
FERRIS WHEEL



BWD-784
EAT IT ALL



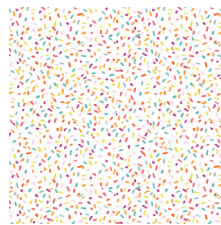
BWD-785
CANDY DOTS



BWD-786
BUSY BEACH



BWD-787
SODA STRAWS



BWD-788
SPRINKLES



BWD-789
I SCREAM, YOU SCREAM



Boardwalk Delight

FINISHED SIZE | 40" x 42"

FABRIC REQUIREMENTS

BOARDWALK DELIGHT

Fabric A	BWD-781	1/8 yd.
Fabric B	BWD-782	1/4 yd.
Fabric C	BWD-783	1/8 yd.
Fabric D	BWD-785	1/8 yd.
Fabric E	BWD-786	1/4 yd.
Fabric F	BWD-787	1/4 yd.
Fabric G	BWD-788	1/8 yd.
Fabric H	BWD-789	1/4 yd.

BACKING FABRIC

Fabric I	BWD-784	1 3/8 yd.
-----------------	---------	-----------

BINDING FABRIC

Fabric J	BWD-780	1/4 yd.
-----------------	---------	---------

PURE ELEMENTS

Fabric K	PE-433	5/8 yd.
Fabric L	PE-430	1/4 yd.
Fabric M	PE-451	1/4 yd.
Fabric N	PE-424	1/4 yd.
Fabric O	PE-444	1/8 yd.
Fabric P	PE-420	1/4 yd.
Fabric Q	PE-449	1/8 yd.
Fabric R	PE-461	1/8 yd.
Fabric S	PE-438	1/4 yd.
Fabric T	PE-448	1/4 yd.

CUTTING DIRECTIONS

1/4" seam allowances are included.
WOF means width of fabric.

Two (2) 2 1/2' x 6 1/2' strips from fabrics **C, D, T**

Three (3) 6 1/2' x 2 1/2' strips from fabric **A**

Four (4) 6 1/2' x 2 1/2' strips from fabrics **E, R**

Five (5) 2 1/2' x 6 1/2' strips from fabric **G**

Six (6) 6 1/2' x 2 1/2' strips from fabrics **H, O, Q**

Seven (7) 2 1/2' x 6 1/2' strips from fabrics **L, N**

Nine (9) 2 1/2' x 6 1/2' strips from fabric **S**

Ten (10) 2 1/2' x 6 1/2' strips from fabrics **B, F**

Twelve (12) 2 1/2' x 6 1/2' strips from fabrics **M, P**

Thirty-three (33) 2 1/2' x 6 1/2' strips from fabric **K**

CONSTRUCTION

Sew all rights sides together with 1/4" seam allowance.

- Sew rectangles to each other row by row, following the illustration below. (Diagram 1)

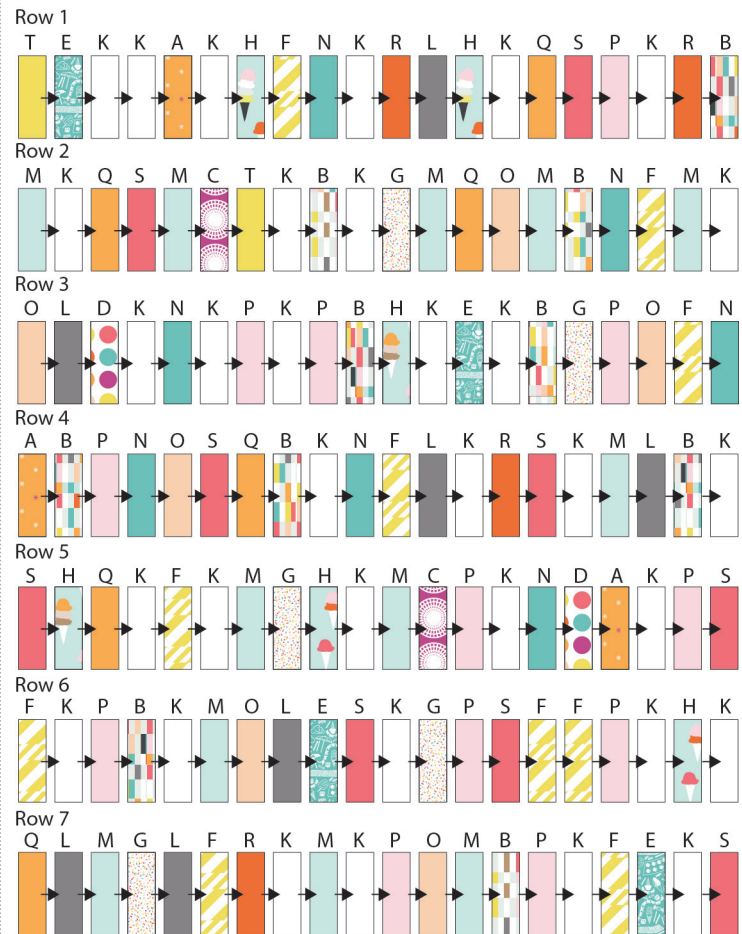


DIAGRAM 1

- For Row 1 sew together rectangles from the following fabrics: T>E>K>K>A>K>H>F>N>K>R>L>H>K>Q>S>P>K>R>B
- For Row 2 sew together rectangles from the following fabrics: M>K>Q>S>M>C>T>K>B>K>G>M>Q>O>M>B>N>F>M>K
- For Row 3 sew together rectangles from the following fabrics: O>A>D>K>N>K>P>K>P>B>H>K>E>K>B>G>P>O>F>N
- For Row 4 sew together rectangles from the following fabrics: A>B>P>N>O>S>Q>B>K>N>F>L>K>R>S>K>M>L>B>K

