

featuring LEGENDARY COLLECTION BY PAT BRAVO

# entwine



FREE PATTERN

XXXXXXXXXXXXXXXXXXXXXXXXXXXX





# entwine

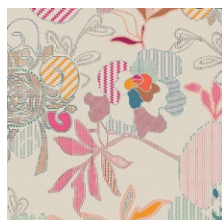
QUILT DESIGNED BY PAT BRAVO

## LEGENDARY

FABRICS DESIGNED BY PAT BRAVO



### BOHO SOUL



LGD-49700  
STITCHED ANTHOMANIA BOHO



LGD-49701  
MARQUETERIE BOHO



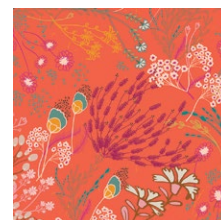
LGD-49702  
WONDERLUST BOHO



LGD-49703  
BRIT BOUTIQUE BOHO



LGD-49704  
FEMME METALE BOHO



LGD-49705  
MEADOW BOHO



LGD-49706  
COLLAR ENDS BOHO



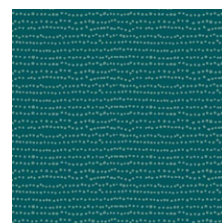
LGD-49707  
COLLAR ENDS SOUL



LGD-49708  
TRINKETS BOHO



LGD-49709  
TRINKETS SOUL

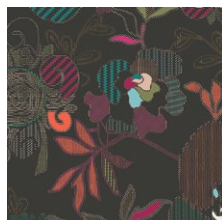


LGD-49710  
FLECKS BOHO



LGD-49711  
FLECKS SOUL

### BOLD DREAMS



LGD-39700  
STITCHED ANTHOMANIA BOLD



LGD-39701  
MARQUETERIE BOLD



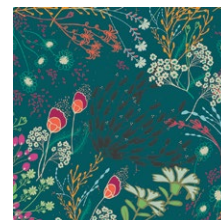
LGD-39702  
WONDERLUST BOLD



LGD-39703  
BRIT BOUTIQUE BOLD



LGD-39704  
FEMME METALE BOLD



LGD-39705  
MEADOW BOLD



LGD-39706  
COLLAR ENDS BOLD



LGD-39707  
COLLAR ENDS DREAMS



LGD-39708  
TRINKETS BOLD



LGD-39709  
TRINKETS DREAMS



LGD-39710  
FLECKS BOLD



LGD-39711  
FLECKS DREAMS





FINISHED SIZE | 64" x 86"

## FABRIC REQUIREMENTS

Fabric <b>A</b>	LGD-39709	1 yd.
Fabric <b>B</b>	LGD-39705	½ yd.
Fabric <b>C</b>	LGD-49710	⅞ yd.
Fabric <b>D</b>	LGD-39701	¼ yd.
Fabric <b>E</b>	LGD-39711	½ yd.
Fabric <b>F</b>	LGD-39700	¼ yd.
Fabric <b>G</b>	LGD-39708	½ yd.
Fabric <b>H</b>	LGD-49706	¼ yd.
Fabric <b>I</b>	LGD-49703	¼ yd.
Fabric <b>J</b>	LGD-39706	⅔ yd.
Fabric <b>K</b>	LGD-49709	⅝ yd.
Fabric <b>L</b>	LGD-39704	½ yd.
Fabric <b>M</b>	LGD-39707	¼ yd.
Fabric <b>N</b>	LGD-49707	⅝ yd.
Fabric <b>O</b>	LGD-49705	¼ yd.
Fabric <b>P</b>	LGD-49708	¼ yd.
Fabric <b>Q</b>	LGD-39703	¼ yd.
Fabric <b>R</b>	LGD-49702	½ yd.
Fabric <b>S</b>	LGD-49704	½ yd.
Fabric <b>T</b>	LGD-49711	¼ yd.
Fabric <b>U</b>	LGD-39710	¼ yd.

### BACKING FABRIC

LGD-39700 5 yds. (*Suggested*)

### BINDING FABRIC

LGD-49710 (Fabric **C**) (*included*)

## CUTTING DIRECTIONS

*¼" seam allowances are included.  
WOF means width of fabric.*

Nineteen (19) 6⅞" x 6⅞" square from Fabric **A**

Nine (9) 6⅞" x 6⅞" square from Fabric **B, L**

One (1) 6½" x 6½" square from Fabric **B**

Ten (10) 6⅞" x 6⅞" square from Fabric **C**

Two (2) 6½" x 6½" square from Fabric **C, H, K, R**

Five (5) 6⅞" x 6⅞" square from Fabric **D, O**

One (1) 6½" x 6½" square from Fabric **D, E, I, P**

Eight (8) 6⅞" x 6⅞" square from Fabric **E, S**

Four (4) 6⅞" x 6⅞" square from Fabric **F, H, T**

Eleven (11) 6⅞" x 6⅞" square from Fabric **G**

Three (3) 6⅞" x 6⅞" square from Fabric **I, P, U**

Fourteen (14) 6⅞" x 6⅞" square from Fabric **J**

Twelve (12) 6⅞" x 6⅞" square from Fabric **K**

Six (6) 6⅞" x 6⅞" square from Fabric **M, R**

Fourteen (14) 6⅞" x 6⅞" square from Fabric **N**

Two (2) 6⅞" x 6⅞" square from Fabric **Q**

Three (3) 6½" x 6½" square from Fabric **T**

## HST CONSTRUCTION

*Sew all rights sides together with ¼" seam allowance.  
HST means Half Square Triangles.*

- Take one 6⅞" square from fabrics **K & O**
- Using a water-soluble marker, mark a diagonal line across the wrong side of fabric **K**

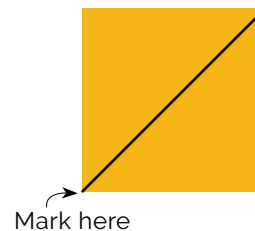


DIAGRAM 1

- Place the marked squares right side together with the unmarked Fabric **O**.
- Sew ¼" on both sides of the marked line.
- Cut piece in half along the drawn line. Press seams open.





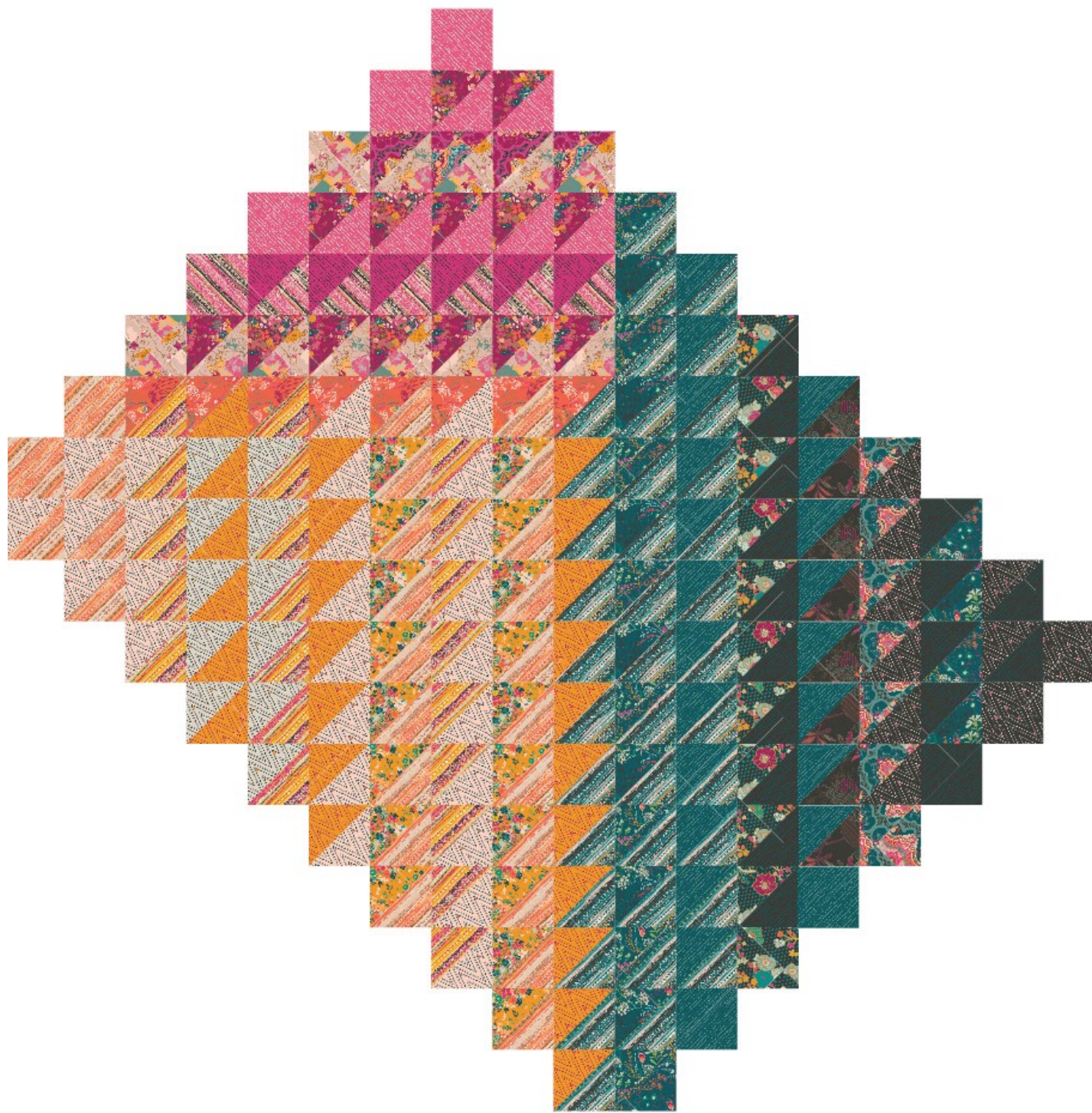
- 100



## ASSEMBLING THE TOP

*Sew all rights sides together with  $\frac{1}{4}$ " seam allowance. Press open.*

- Now that all the HST's are sewn together please refer to the diagram below for HST and the  $6\frac{1}{2}$ " perfect square rows placement.



- Rotate your quilt top and trim to a  $64\frac{1}{2}$ " x  $83\frac{1}{2}$ ".



## QUILT ASSEMBLY

*Sew rights sides together.*

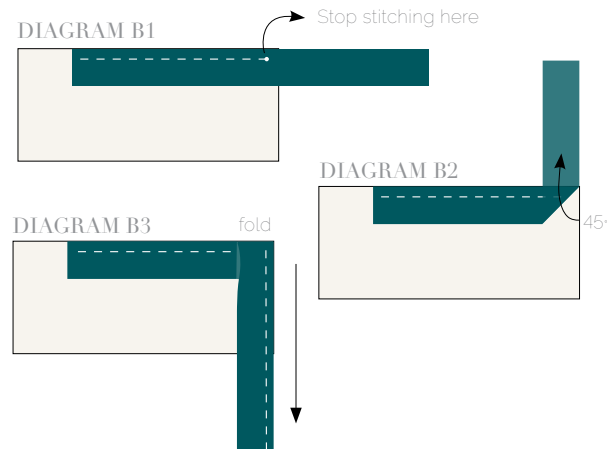
- Place BACKING FABRIC on a large surface wrong side up. Stretch it with masking tape against that surface.
- Place BATTING on top of backing fabric.
- Place TOP on top of the batting with right side facing up. Smooth away wrinkles using your hands.
- Pin all layers together and baste with basting thread, using long stitches. You can also use safety pins to join the layers.
- Machine or hand quilt starting at the center and working towards the corners. Remember that quilting motifs are a matter of personal preference. Have fun choosing yours!
- After you finished, trim excess of any fabric or batting, squaring the quilt to proceed to bind it.

## BINDING

*Sew rights sides together.*

- Cut enough strips  $1\frac{1}{2}$ " wide by the width of the fabric **C** to make a final strip 310" long. Start sewing the binding strip in the middle of one of the sides of the quilt, placing the strip right side down and leaving an approximated 5" tail. Sew with  $\frac{1}{4}$ " seam allowance (using straight stitch), aligning the strip's raw edge with the quilt top's raw edge.
- Stop stitching  $\frac{1}{4}$ " before the edge of the quilt (DIAGRAM B 1). Clip the threads. Remove the quilt from under the machine presser foot. Fold the strip in a motion of  $45^\circ$  and upward, pressing with your fingers (DIAGRAM B2). Hold this fold with your finger, bring the strip down in line with the next edge, making a horizontal fold that aligns with the top edge of the quilt (DIAGRAM B3). Start sewing at  $\frac{1}{4}$ " of the border, stitching all the layers. Do the same in the four corners of the quilt.

- Stop stitching before you reach the last 5 or 6 inches. Cut the threads and remove the quilt from under the machine presser foot. Lay the loose ends of the binding flat along the quilt edge, folding the ends back on themselves where they meet. Press them together to form a crease. Using this crease as the stitching line, sew the two open ends of the binding with right sides together (you can help yourself marking with a pencil if the crease is difficult to see).
- Trim seam to  $\frac{1}{4}$ " and press open. Complete the sewing. Turn binding to back of the quilt, turn raw edge inside and stitch by hand using blind stitch.



[artgalleryfabrics.com](http://artgalleryfabrics.com)

NOTE: While all possible care has been taken to ensure the accuracy of this pattern, We are not responsible for printing errors or the way in which individual work varies. Please read instructions carefully before starting the construction of this quilt. If desired, wash and iron your fabrics before starting to cut.

© 2018 Courtesy of Art Gallery Quilts LLC. All Rights Reserved.