

Posh Flowers

Featuring "BOTANICA" Collection



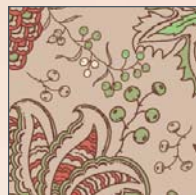
BO-2154



BO-2155



BO-2157



BO-2152



BO-2151



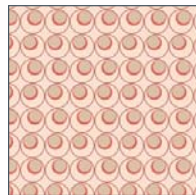
BO-2158



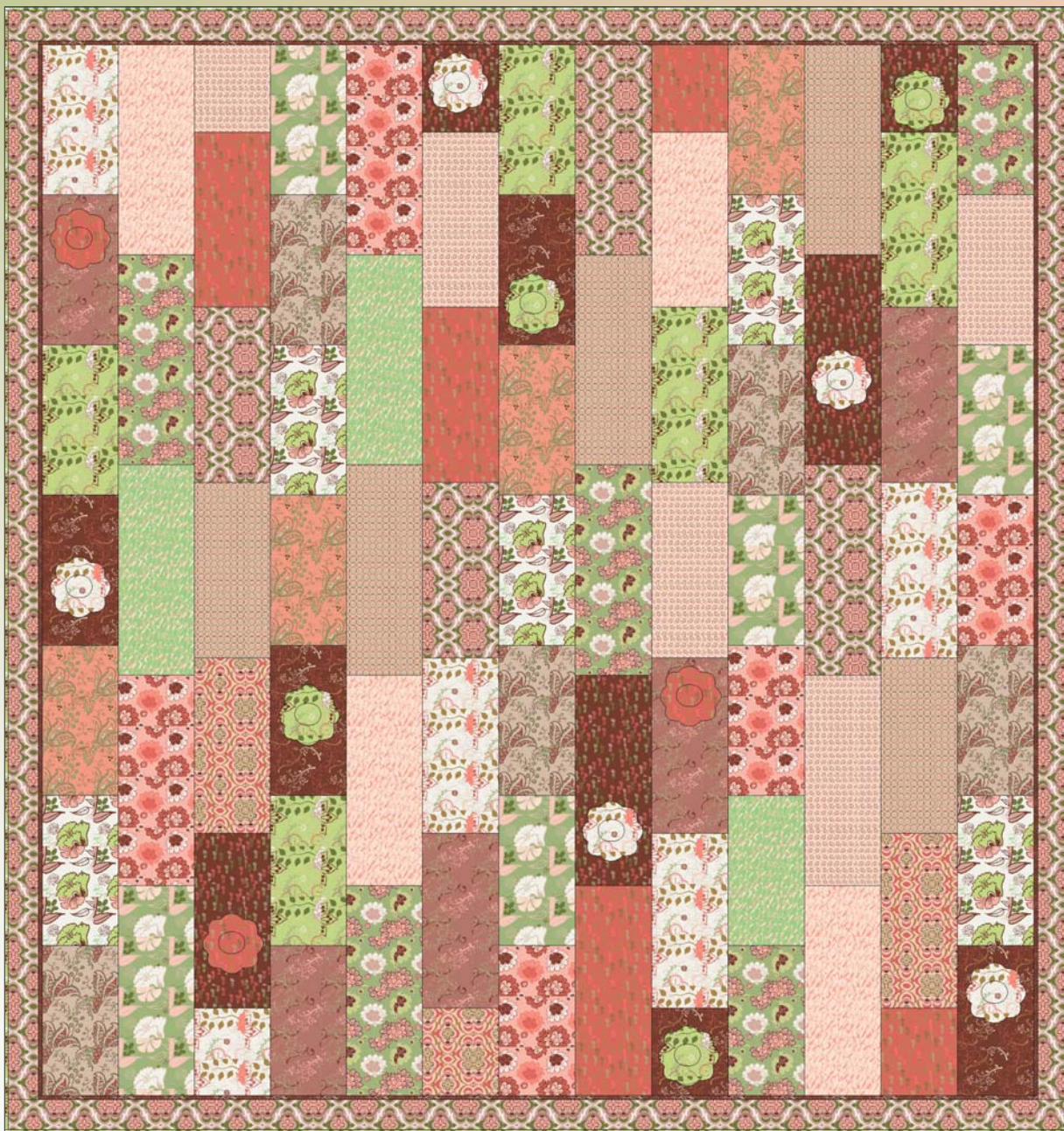
BO-2156



BO-2153



BO-2159



Designed by Patricia Bravo - 70" by 74"

Free Project Sheet



BO-1154 BO-1155 BO-1157 BO-1152 BO-1151 BO-1158 BO-1156 BO-1153 BO-1159



© 2008 Courtesy of Art Gallery Quilts LLC. All rights reserved.

3804 N 29th Avenue - Hollywood, FL 33020 TEL: (888) 420-5399 FAX: (425) 799-6103

for more fabrics and projects visit our website www.artgalleryfabrics.com

Posh Flowers

Finished Size: 70" x 74"

Quilt designed by Patricia Bravo for *Art Gallery* FABRICS

The estimate for the fabrics of the borders and binding assumes that long strips are pieced.
All seam allowances are 1/4". Please read all directions before beginning and press carefully after each seam.

Fabric Requirements: "BOTANICA" COLLECTION

Fabric A: 1/2 yd. of **BO-1151**
Fabric B: 3/4 yd. of **BO-2151**
Fabric C: 3/8 yd. of **BO-1152**
Fabric D: 3/8 yd. of **BO-2152**
Fabric E: 3/8 yd. of **BO-2153**
Fabric F: 3/8 yd. of **BO-1153**

Fabric G: 3/8 yd. of **BO-2159**
Fabric H: 1 1/8 yd. of **BO-2155**
Fabric I: 1/4 yd. of **BO-1155**
Fabric J: 3/8 yd. of **BO-2156**
Fabric K: 5/8 yd. of **BO-1156**
Fabric L: 3/8 yd. of **BO-2154**

Fabric M: 3/8 yd. of **BO-1158**
Fabric N: 1/4 yd. of **BO-2158**
Fabric O: 3/8 yd. of **BO-1154**
Fabric P: 3/8 yd. of **BO-1157**
Fabric Q: 3/8 yd. of **BO-1159**
Fabric R: 3/8 yd. of **BO-2157**

Fabric suggested for backing:
2 1/4 yd. of Fabric G

Eleven (11) 4 1/2" squares of non-fusible, nonwoven interfacing.

Important Hint for fabric placement: All the letters shown in color BLUE inside the *Fabric Layout Diagram* represent the strips but ALSO represent the fabric styles explained in "FABRICS REQUIREMENTS" (notice they are also represented in the same color).

Cutting Directions: This quilt consist of vertical stripes of different fabric's strips.

For fabric A cut: (5 strips total)

One (1) 6 1/4" by 5 1/2".
Three (3) 12" by 5 1/2".
One (1) 10 3/8" by 5 1/2".

For fabric B cut: (5 strips total)

Five (5) 4 1/2" squares (for flowers).
Three (3) 10 3/8" by 5 1/2".
Two (2) 12" by 5 1/2".

For fabric C cut: (4 strips total)

Four (4) 4 1/2" squares (for flowers).

For fabric D cut: (5 strips total)

Five (5) 10 3/8" by 5 1/2"

For fabric E cut: (5 strips total)

Two (2) 10 3/8" by 5 1/2".
Three (3) 14 1/4" by 5 1/2".

For fabric F cut: (5 strips total)

Two (2) 14 1/4" by 5 1/2".
Three (3) 10 3/8" by 5 1/2".

For fabric G cut: (5 strips total)

One (1) 10 3/8" by 5 1/2".
Two (2) 12" by 5 1/2".

For fabric H cut: (4 strips total)

One (1) 14 1/4" by 5 1/2".
One (1) 6 1/4" by 5 1/2".

For fabric I cut: (3 strips total)

Two (2) 14 1/4" by 5 1/2".
Two (2) 12" by 5 1/2".

For fabric J cut: (5 strips total)

Two (2) 12" by 5 1/2".
One (1) 6 1/4" by 5 1/2".

For fabric K cut: (5 strips total)

Two (2) 14 1/4" by 5 1/2".
One (1) 12" by 5 1/2".

For fabric L cut: (5 strips total)

Five (5) 10 3/8" by 5 1/2".

For fabric M cut: (4 strips total)

Three (3) 14 1/4" by 5 1/2".
One (1) 12" by 5 1/2".

For fabric N cut: (3 strips total)

Two (2) 14 1/4" by 5 1/2".
One (1) 10 3/8" by 5 1/2".

For fabric O cut: (5 strips total)

Two (2) 10 3/8" by 5 1/2".
Three (3) 12" by 5 1/2".

For fabric P cut: (5 strips total)

One (1) 6 1/4" by 5 1/2".
Four (4) 10 3/8" by 5 1/2".

For fabric Q cut: (5 strips total)

One (1) 6 1/4" by 5 1/2".
Four (4) 10 3/8" by 5 1/2".

For fabric R cut: (5 strips total)

Three (3) 14 1/4" by 5 1/2".
One (1) 12" by 5 1/2".

For fabric S cut: (5 strips total)

Two (2) 14 1/4" by 5 1/2".
One (1) 10 3/8" by 5 1/2".

For fabric T cut: (5 strips total)

One (1) 14 1/4" by 5 1/2".
Four (4) 10 3/8" by 5 1/2".

For fabric U cut: (5 strips total)

Two (2) 12" by 5 1/2".
One (1) 14 1/4" by 5 1/2".

Two (2) 6 1/4" by 5 1/2".
Three (3) 4 1/2" squares (for flowers).

For fabric V cut: (5 strips total)

Three (3) 14 1/4" by 5 1/2".
Two (2) 12" by 5 1/2".

For fabric W cut: (5 strips total)

One (1) 12" by 5 1/2".
Two (2) 14 1/4" by 5 1/2".

Two (2) 6 1/4" by 5 1/2".

Two (2) 66" by 3/4" strips from fabric K. Two (2) 69 1/2" by 3/4" strips from fabric K.

For inner border cut

Two (2) 66" by 3/4" strips from fabric K. Two (2) 69 1/2" by 3/4" strips from fabric K.

For outer border cut

Four (4) 70" by 2 1/2" strips from fabric H.

Quilt Top Assembly: vertical stripes (sew right sides together)

Stripe 1 is made from 10 3/8" strips. Start piecing the fabric strips on the order shown on the front cover picture or diagram.

Stripe 2 is made from 14 1/4" strips. Start piecing the fabric strips on the order shown on the front cover picture or diagram.

Stripe 3 is made from 12" strips and a 6 1/4" strip on each extreme (top and bottom). Start piecing the fabric strips on the order shown on the front cover picture or diagram.

After you finish, the next three stripes are a repetition of the first three.

You keep repeating stripes 1, 2 and 3 until you finish with all your fabric strips.

For the flowers, trace Template X on a cardboard and then trace this shape on the wrong side of all the 4 1/2" squares of the 3 different fabrics you have left. With right sides together, layer your applique fabric with a like-size piece of non-fusible, nonwoven interfacing. Sew the pieces together, stitching on the marked line. Cut out the flower shape, adding 1/8" allowance to all edges. Clip a small slit ONLY in the center of the interfacing (DON'T CUT THE APPLIQUE FABRIC!). Turn the applique right side out through the slit. Press with hot iron from the right side.

Applique the flowers in the spots indicated on the front cover picture by hand or by machine with a blind hem stitch.

Template X

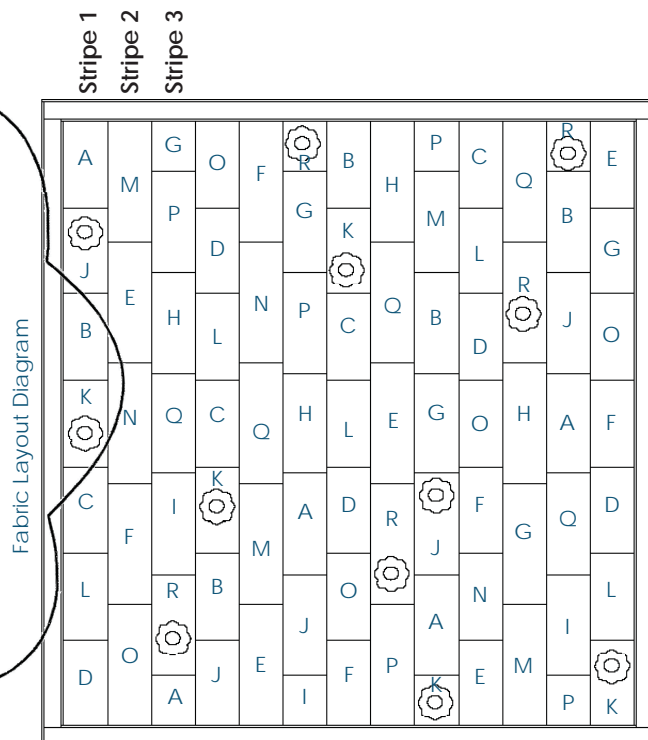
For the inner border, sew two 66 by 3/4" fabric K strips along the top and the bottom sides of the top with a 1/4" seam allowance. Press open.

Sew the other two strips along the remaining sides of the top with a 1/4" seam allowance. Press open.

For the outer border, sew two 70 by 2 1/2" fabric H strips along the top and the bottom sides of the top with a 1/4" seam allowance. Press open.

Sew the other two strips along the remaining sides of the top with a 1/4" seam allowance. Press open.

Layer, quilt and bind with fabric B strips as desired (by machine or by hand).



While all possible care has been taken to ensure the accuracy of this pattern, we are not responsible for printing errors or the way in which individual work varies.



2008 Courtesy of Art Gallery Quilts LLC. All rights reserved
3804 N 29th Avenue - Hollywood, FL 33020. TEL: (888) 420-5399 FAX: (425) 799-6103

www.artgalleryfabrics.com