

sun spots

QUILT DESIGNED BY MAUREEN CRACKNELL



FABRICS DESIGNED BY MAUREEN CRACKNELL



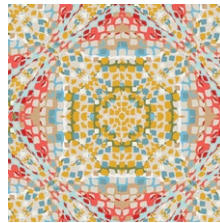
CLARY BREEZE



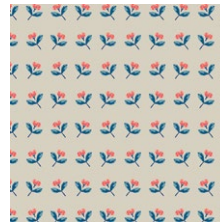
SKS-94300
SUMMERDRESS DREAMS RAY



SKS-94301
HAZY DAISIES SKY



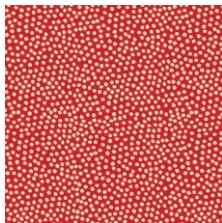
SKS-94302
KALEIDOSCOPE BEACHSIDE



SKS-94303
BASKING BUDS SAND



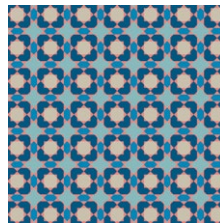
SKS-94304
FLORAL POPS LEMONADE



SKS-94305
SUNSPOTS STRAWBERRY



SKS-94307
PALM ISLAND ESCAPE



SKS-94308
POOL TILE BLUE



SKS-94309
BANDANA GRAPEFRUIT



SKS-94310
WOVEN TRAILS OCEAN

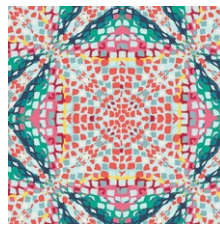
VIVID JOY



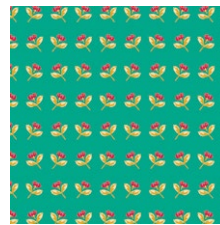
SKS-84300
SUMMERDRESS DREAMS TIDE



SKS-84301
HAZY DAISIES SCARLET



SKS-84302
KALEIDOSCOPE POOLSIDE



SKS-84303
BASKING BUDS JADE



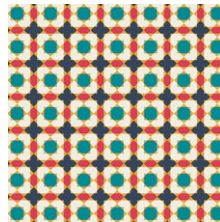
SKS-84304
FLORAL POPS CHERRY



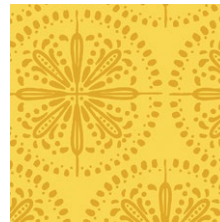
SKS-84305
SUNSPOTS RASPBERRY



SKS-84306
SUNNY SIDE UP



SKS-84308
POOL TILE BURST



SKS-84309
BANDANA BANANA



SKS-84310
WOVEN TRAILS LAGOON



sun spots

FINISHED SIZE | 72' x 72'

FABRIC REQUIREMENTS

Fabric A	SKS-84300	½ yd.
Fabric B	SKS-94303	½ yd.
Fabric C	SKS-94302	½ yd.
Fabric D	SKS-94309	½ yd.
Fabric E	SKS-94308	½ yd.
Fabric F	SKS-94304	½ yd.
Fabric G	SKS-94300	½ yd.
Fabric H	SKS-94301	½ yd.
Fabric I	PE-408	2 ¼ yd.

BACKING FABRIC

SKS-94308 4 ½ yds. *(suggested)*

BINDING FABRIC

Fabric J SKS-94310 ¾ yd.

CUTTING DIRECTIONS

¼" seam allowances are included.
WOF means width of fabric.

Fabrics A, C, E, G:

Nine (9) 2 ½" x 6 ½" rectangles
Twenty-seven (27) 2 ½" x 4 ½" rectangles
Eighteen (18) 2 ½" squares

Fabrics B, D, F, H:

Eighteen (18) 2 ½" x 6 ½" rectangles
Eighteen (18) 2 ½" x 4 ½" rectangles

Fabric I:

Thirty-six (36) 2 ½" x 10 ½" rectangles
Thirty-six (36) 2 ½" x 8 ½" rectangles
Thirty-six (36) 2 ½" x 6 ½" rectangles
Thirty-six (36) 2 ½" x 4 ½" rectangles
Thirty-six (36) 2 ½" squares

BLOCK CONSTRUCTION

Sew all right sides together with ¼" seam allowance.

- The block used in this quilt is a variation of a Quarter Log Cabin Block. Several of the strips are pieced together prior to assembling the block then sewn in alternating bands of white and prints creating a dynamic corner emphasis when complete.
- You will use three fabrics for each block, the Corner Fabric, Edge Fabric, and the White Background Fabric.

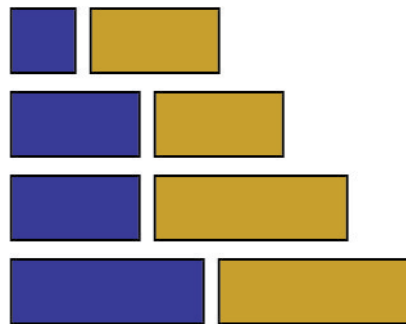


DIAGRAM 1

- First, piece together the following strips:
 - 2 ½" square (corner fabric) > 4 ½" strip (edge fabric)
 - 4 ½" strip (corner fabric) > 4 ½" strip (edge fabric)
 - 4 ½" strip (corner fabric) > 6 ½" strip (edge fabric)
 - 6 ½" strip (corner fabric) > 6 ½" strip (edge fabric)
 - (see Diagram 1)
- Next, start assembling your Quarter Log Cabin Block. Refer to Diagrams 2 and 3 for orientation of strips.
- Sew a 2 ½" square (white background fabric) > 2 ½" square (corner fabric).
- Sew block to a 4 ½" strip (corner fabric).
- Sew block to a 4 ½" strip (white fabric).
- Sew block to a 6 ½" strip (white fabric).
- Sew block to the pieced 6 ½" strip (make sure corner fabric is positioned like the diagram).
- Sew block to the pieced 8 ½" strip.
- Sew block to a 8 ½" strip (white fabric).
- Sew block to a 10 ½" strip (white fabric).
- Sew block to the pieced 10 ½" strip.
- Sew block to the pieced 12 ½" strip.

