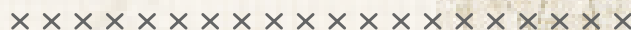




Autumn Winds



FREE PATTERN





Autumn Winds

QUILT DESIGNED BY SHARON HOLLAND

Autumn VIBES

FABRICS DESIGNED BY MAUREEN CRACKNELL



BY THE CHIMNEY



AIV-81205
FOXES IN FALL



AIV-81201
COZY DITZY PLUM



AIV-81209
ACORNS & PINECONES MINT



AIV-81204
MIDFALL TRELLIS CROCUS



AIV-81200
FLORAL GLOW COCOA



AIV-81207
AUTUMN NECTAR HONEY



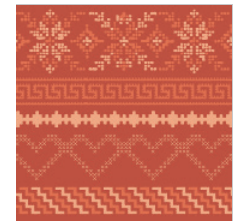
AIV-81203
PRESSED ABLOSSOM AUBURN



AIV-81202
SIMPLE DEFOLIAGE GOLD



AIV-81208
HARVEST TRAILS WALNUT

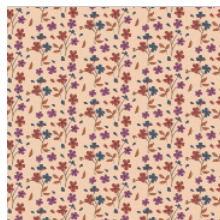


AIV-81210
FALL IN LOVE WARM

FRESH NIGHT BREEZE



AIV-91206
SQUIRRELS AT PLAY



AIV-91201
COZY DITSY APRICOT



AIV-91209
ACORNS & PINECONES PECAN



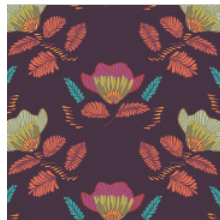
AIV-91204
MIDFALL TRELLIS PUMPKIN



AIV-91200
FLORAL GLOW TWILIT



AIV-91207
AUTUMN NECTAR MIST



AIV-91203
PRESSED ABLOSSOM ROYAL



AIV-91202
SIMPLE DEFOLIAGE VIOLET



AIV-91208
HARVEST TRAILS VANILLA



AIV-91210
FALL IN LOVE SERENE





FINISHED SIZE | 70" x 70"

FABRIC REQUIREMENTS

Fabric A	ATV-87200	½ yd.
Fabric B	ATV-87203	½ yd.
Fabric C	ATV-87204	½ yd.
Fabric D	ATV-97209	½ yd.
Fabric E	ATV-87207	½ yd.
Fabric F	ATV-97207	½ yd.
Fabric G	ATV-87210	½ yd.
Fabric H	ATV-97210	½ yd.
Fabric I	ATV-87201	½ yd.
Fabric J	ATV-87209	¼ yd.
Fabric K	ATV-97202	¾ yd.
Fabric L	ATV-87202	2 ¾ yd.

BACKING FABRIC

ATV-87200 4 ¼ yds. *(Suggested)*

BINDING FABRIC

ATV-87201 (Fabric I) *(Included)*

CUTTING PREPERATIONS

Fabrics A-H

© Cut one (1) 11" x 42" strip then cut into two (2) 11" squares and three (3) 5 ¼" squares.

© Cut one (1) 5 ¼" x 42" strip then cut into one (1) 5 ¼" square and four (4) 3" squares.

Fabric I

© Cut seven (7) 2 ¼" x 42" strips for binding.

Fabric J

© Cut two (2) 2 ½" x 42" strips then cut into (21) 2 ½" squares.

Fabric K

© Cut two (2) 11" squares and two (2) 3" squares.



Fabric L

© Cut six (6) 11" x 42" strips, then cut into eighteen (18) 11" squares and eighteen (18) 3" squares.

© Cut one (1) 3" x 42" strip then cut into twelve (12) 3" squares.

© Cut ten (10) 2 ⅞" x 42" strips then cut into one hundred twenty-eight (128) 2 ⅞" squares and (4) 2 ½" squares.

CONSTRUCTION

Sew all rights sides together with ¼" seam allowance.

© BLOCKS

© 1. Draw a diagonal line on the wrong side of (2) 11" Fabric L squares. Place a marked 11" square right sides together with an 11" Fabric A square. Sew a ¼" seam on each side of the drawn line. Cut apart on the line. Open and press. Trim to 10 ½" square. Makes 2 large half-square triangle (HST) units. Make a total of 4 matching HST units. Set aside.

© Make the rest of the large 10 ½" HST units by matching 11" Fabric L squares with the 11" squares in Fabrics B, C, D, E, F, G, H & K and finishing in the same manner as for Fabric L-A pairs above. See diagram below on making large HST units.

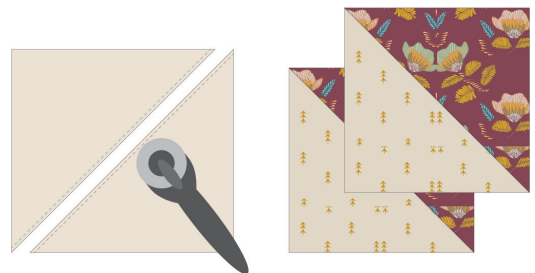
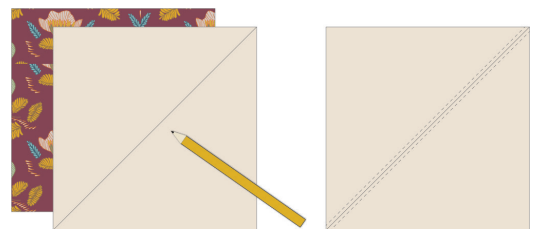


DIAGRAM 1

- © 9. Sew a block sashing row between 2 large HST units. Make a total of 2 rows.
- © 10. Sew the 2-½' Acorns & Pinecones square between 2 block sashing rows.
- © 11. Join the rows to make one block. Make a total of 9 blocks.

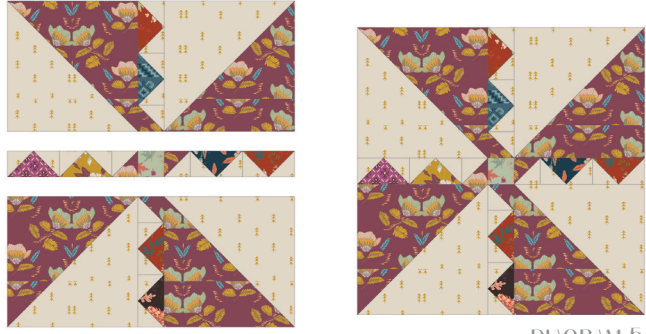


DIAGRAM 5

- © 9. Sew a block sashing row between 2 large HST units. Make a total of 2 rows.

- © 10. Sew the 2-½' Acorns & Pinecones square between 2 block sashing rows.
- © 11. Join the rows to make one block. Make a total of 9 blocks.

© **ASSEMBLE**

- © 1. Gather your remaining small HST units, Flying Geese units and the 2 ½' squares in Fabrics **J & L**.
- © 2. Referring to the Quilt Assembly diagram and noting placement and orientation, sew 12 assorted Flying Geese units, 6 assorted small HST units, and (3) 2 ½' Fabric **J** squares together to make one border. Make a total of two borders. Sew to the sides of the quilt.
- © 3. Sew 12 assorted Flying Geese units, 6 assorted small HST units, (3) 2 ½' Fabric **J** squares, and (2) 2 ½' Fabric **L** squares together to make one border. Make a total of 2 borders. Sew to the top and bottom of the quilt.

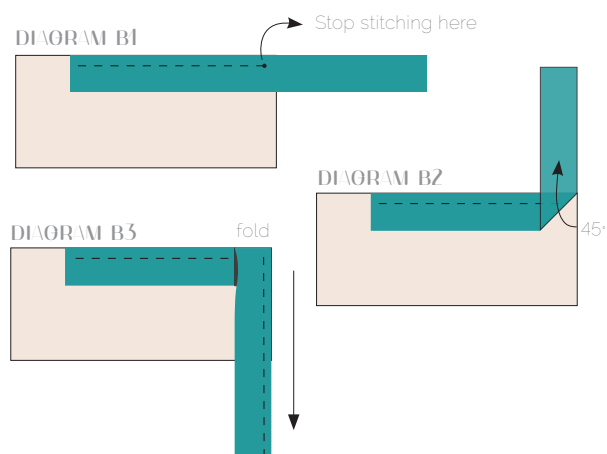


DIAGRAM 6

QUILT ASSEMBLY

- © Cut backing into (2) 76 ½" pieces. Cut selvage off and join together, using a ½" seam allowance. Press seam open to reduce bulk. Trim to 76 ½" square.
- © Press the quilt top and backing well.
- © Place BACKING FABRIC on a large surface wrong side up. Stretch it with masking tape against that surface.
- © Place BATTING on top of backing fabric.
- © Place TOP on top of the batting with right side facing up.
- © Pin all layers together and baste with basting thread, using long stitches. You can also use safety pins to join the layers.
- © Machine or hand quilt starting at the center and working towards the corners. Remember that quilting motifs are a matter of personal preference. Have fun choosing yours!
- © After you finish, trim off any excess fabric or batting, squaring the quilt to proceed to bind it.

- © Stop stitching before you reach the last 5 or 6 inches. Cut the threads and remove the quilt from under the machine presser foot. Lay the loose ends of the binding flat along the quilt edge, folding the ends back on themselves where they meet. Press them together to form a crease. Using this crease as the stitching line, sew the two open ends of the binding with right sides together (you can help yourself marking with a pencil if the crease is difficult to see).
- © Trim seam to ¼" and press open. Complete the sewing. Turn binding to back of the quilt and stitch by hand using blind stitch.



BINDING

- © Use the (7) 2 ¼" x 42" fabric I to make a final strip 290" long. Fold the strip in half along the length and press. Start sewing the binding strip in the middle of one of the sides of the quilt and leaving an approximated 5" tail. Sew with ¼" seam allowance (using a straight stitch), aligning the strip's raw edges with the quilt top's raw edge.
- © Stop stitching ¼" before the edge of the quilt (**DIAGRAM B 1**). Clip the threads. Remove the quilt from under the machine presser foot. Fold the strip in a motion of 45° and upward, pressing with your fingers (**DIAGRAM B2**). Hold this fold with your finger, bring the strip down in line with the next edge, making a horizontal fold that aligns with the top edge of the quilt (**DIAGRAM B3**). Start sewing at ¼" of the border, stitching all the layers. Do the same in the four corners of the quilt.



artgalleryfabrics.com

NOTE: While all possible care has been taken to ensure the accuracy of this pattern, We are not responsible for printing errors or the way in which individual work varies. Please read instructions carefully before starting the construction of this quilt. If desired, wash and iron your fabrics before starting to cut.

©2018 Courtesy of Art Gallery Quilts LLC. All Rights Reserved.