

FLOWER CROWNS

Maureen
Cracknell

QUILT DESIGNED BY Sharon McConnell



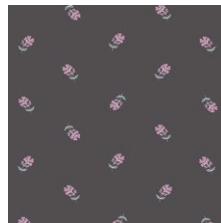
Flower Child

FABRICS DESIGNED BY MAUREEN CRACKNELL

WILD HEART



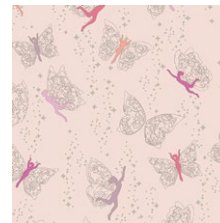
FCD-67150
FLOWERY CHANT WILD



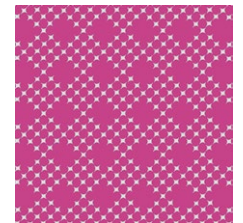
FCD-67151
SPRINKLED PETALS MOON



FCD-67152
LUSH CANOPY CLOUD



FCD-67153
PRAIRIE FAIRIES DAY



FCD-67154
PIXIE DUST GLOW



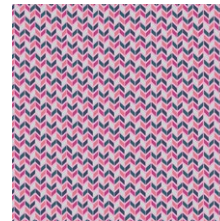
FCD-67155
FLICKER & FADE BLUE



FCD-67156
BLOOMING GROUND LUSCIOUS



FCD-67157
COSMIC SISTER IMPRINT



FCD-67158
BRAIDED PATH SUBLIME

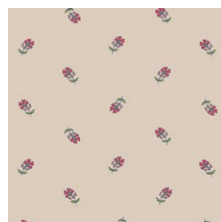


FCD-67159
ENCHANTED MEADOW

GENTLE HEART



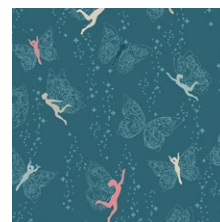
FCD-77150
FLOWERY CHANT GENTLE



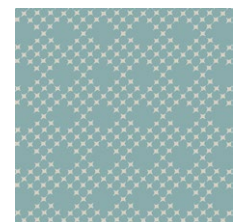
FCD-77151
SPRINKLED PETALS SUN



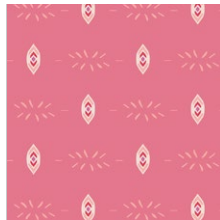
FCD-77152
LUSH CANOPY SKY



FCD-77153
PRAIRIE FAIRIES NIGHT



FCD-77154
PIXIE DUST SPARK



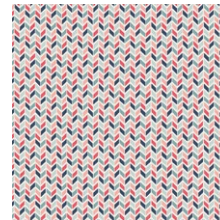
FCD-77155
FLICKER & FADE BLUSH



FCD-77156
BLOOMING GROUND LUSTROUS



FCD-77157
COSMIC SISTER IMPRESS



FCD-77158
BRAIDED PATH SUBTLE



FCD-77160
SISTERHOOD



FLOWER CROWNS

FINISHED SIZE | 40' x 40'

FABRIC REQUIREMENTS

Fabric A	FCD-77152	$\frac{3}{8}$ yd.
Fabric B	FCD-77153	$\frac{3}{8}$ yd.
Fabric C	FCD-77156	$\frac{3}{8}$ yd.
Fabric D	FCD-67156	$\frac{3}{8}$ yd.
Fabric E	FCD-77154	$\frac{1}{3}$ yd.
Fabric F	FCD-67154	$\frac{1}{3}$ yd.
Fabric G	FCD-67151	$\frac{1}{6}$ yd.
Fabric H	FCD-67155	$\frac{1}{6}$ yd.
Fabric I	ROE-303	$\frac{1}{3}$ yd.
Fabric J	PE-433	$1\frac{1}{8}$ yd.
Fabric K	FCD-77158	$\frac{3}{8}$ yd.

BACKING FABRIC

FCD-67159 2 $\frac{1}{3}$ yds. (Suggested)

BINDING FABRIC

FCD-77158 $\frac{3}{8}$ yd (included)

IMPORTANT NOTE:

There are two ways to construct this quilt:

- First option is using the Classic Curves Ruler. (Ruler sold separately)
- Second Option is using the templates provided on the last pages.

Before cutting any pieces pick the one that fits you better and follow instructions for the specific one you are making.

Cutting directions & overall instructions differ depending on the method used.

Classic Curves Ruler (CCR)

CUTTING DIRECTIONS

$\frac{1}{4}$ " seam allowances are included.
WOF means width of fabric.

- Cut Two (2) $6\frac{1}{2}$ " squares from fabrics **A B C & D**
- Cut Eight (8) $5\frac{1}{2}$ " squares from fabrics **A B C & D**
- Cut Two (2) 6" squares from fabrics **E & I**
- Cut Two (2) 5" squares from fabrics **E & I**
- Cut Four (4) 5" squares from fabrics **F G & H**
- Cut Four (4) 6" squares from fabrics **F G & H**
- Cut Sixteen (16) $6\frac{1}{2}$ " squares from fabric **J**
- Cut Sixteen (16) $5\frac{3}{4}$ " squares from fabric **J**

CONSTRUCTION

Sew all rights sides together with $\frac{1}{4}$ " seam allowance.

- Grab all the 6" squares from Fabric **E F G H & I**
- Match the fabrics right sides facing together in order to create HST with the following fabric combinations **HI GF FH EG**
- Make sets of four units for each combination of HST



DIAGRAM 1

- Repeat step one with the 5" squares from fabrics **E F G H & I**
- Ensure that the units are made in sets of four with the same fabric combinations as in step one.
- Place one $5\frac{1}{2}$ " HST unit on the cutting surface.
- Place the Classic Curves Ruler over the fabric as shown. Ensure that the diagonal seam line on the fabric aligns with the diagonal line on the ruler.
- Align the bottom and right edges of the fabric square with the lines on the ruler for cutting the convex curve (red arrows in illustration).

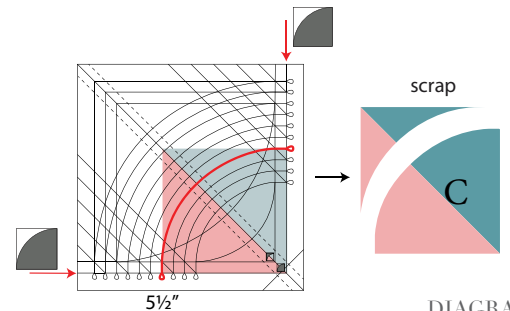


DIAGRAM 2

- Use the $5\frac{1}{2}$ " groove to cut the curve, resulting in one C shape.
- Repeat to cut all 16 of the $5\frac{1}{2}$ " HST units
- Set aside.
- Place one $4\frac{1}{2}$ " HST unit on the cutting surface and place the CCR over the fabric (same as previous step.)
- Use the $4\frac{1}{2}$ " groove to cut a second smaller C shape.
- Repeat to cut all 16 of the $4\frac{1}{2}$ " HST units into C shapes.
- Take fabrics **A, B, C** and **D** $5\frac{1}{2}$ " squares and repeat the same $5\frac{1}{2}$ " groove to cut the curves.

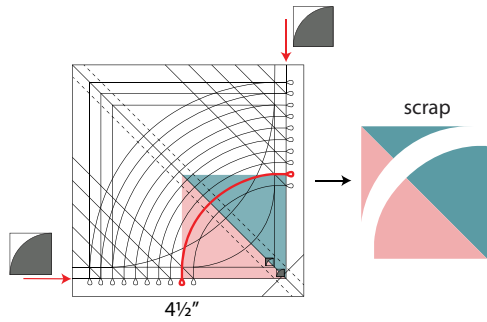


DIAGRAM 3

- Take the 6½" squares from fabrics **A B C & D**
- Place one 6½" Square on the cutting surface. Cut a ¾" square from two opposite corners as shown.
- Place the CCR over the fabric so that the edges of the cut squares align with the lines on the ruler for cutting the concave curve (red arrows in illustration). The 5½" cutting groove should pass through the corners of the cut squares.

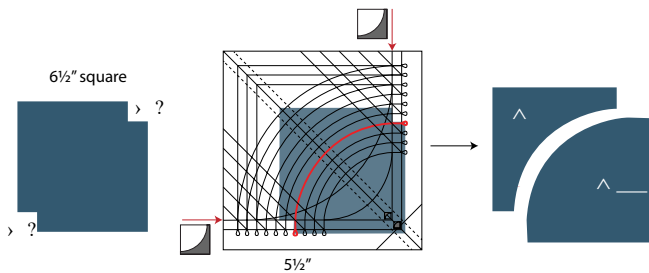


DIAGRAM 4

- Use the 5½" groove to cut the curve, yielding one A shape.
- Set aside.
- Rotate the A² shape on the cutting surface and place the CCR over the piece again. The bottom and right edges of the fabric must align with the lines on the ruler for cutting the concave curve.
- This will result of having Two Concave curve pieces.

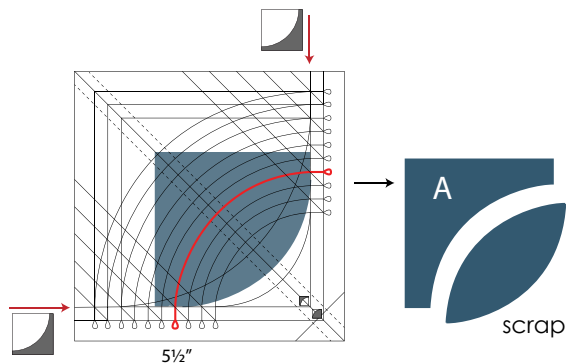


DIAGRAM 5

- Repeat steps with the remaining fabrics to cut all of the 6½" squares and white 6½" squares into A shapes. Cut a total of 16 print A shapes and 32 white A shapes. Set aside for piecing blocks.
- Place a 5¾ square from fabric **J** on the cutting surface. Place the CCR over the fabric so that one corner (two adjacent sides) align with the lines on the ruler for cutting the concave curve.
- Use the 4½" groove to cut the curve. Repeat for all the 5¾" square from fabric **J** squares, for a total of 16 B shapes.

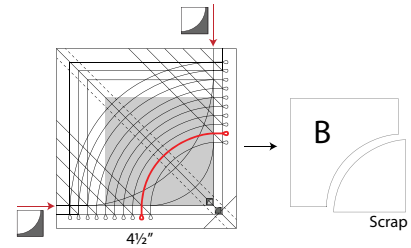


DIAGRAM 6

- Match one primary print A shape with a 5½" pieced C shape.
- Fold the A shape to find the center of the curved edge. Pinch or pin to mark. Fold the two ends of the curve in to the center and mark the points half-way to center. Repeat to mark the same points on the pieced C shape.
- Turn the print A shape right sides facing and pin the curved edges at the marked points, plus the two ends of the curve.

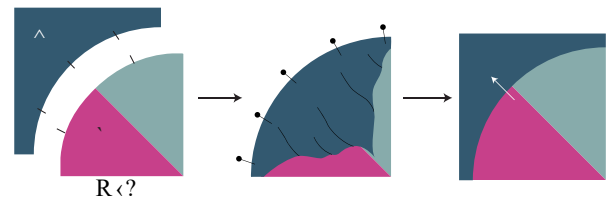


DIAGRAM 7

- Sew the curved edge using a ¼" seam. Be careful to keep fabric edges aligned and avoid stretching the fabric. Remove pins as you approach them. Open and press toward the A shape
- Repeat previous steps to sew four 5½" pieced C shapes with matching fabrics to four A shapes of the same primary print. Make four sets.

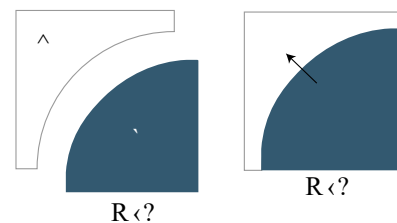
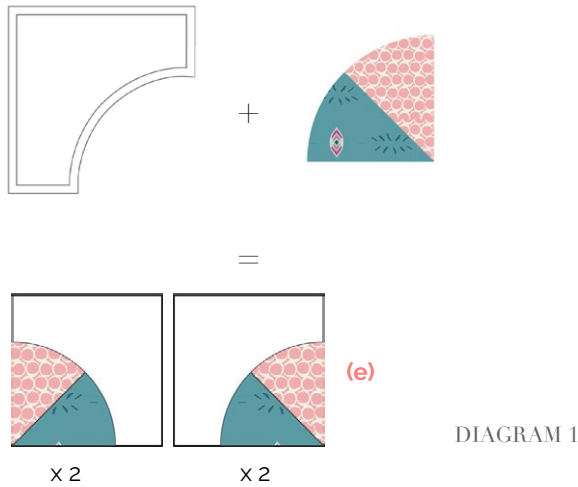
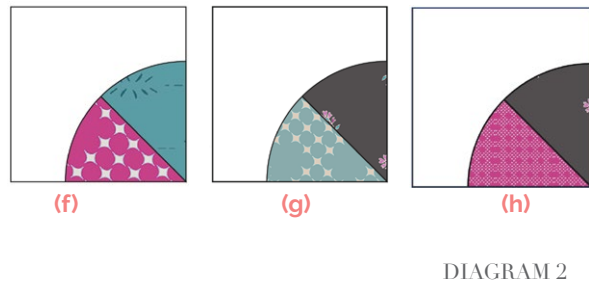


DIAGRAM 8

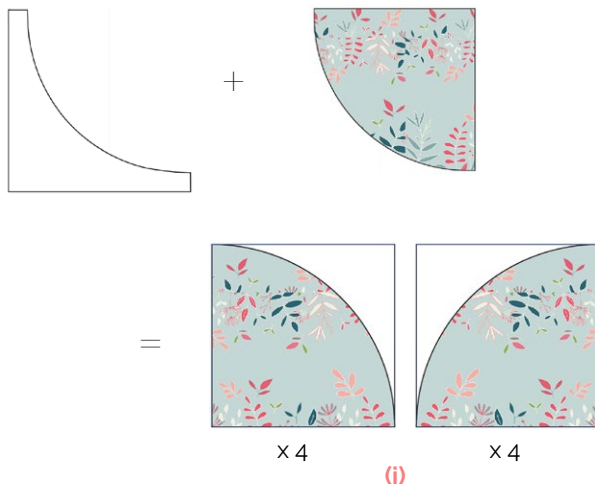
- Use fabric **J** templates **2** and the Template **1** fabrics **I-H, F-G, F-H, G-E** and pair them as in the diagram below.



- You should have **four (4)** mirrored blocks for each combination. Refer to the diagram below to properly create your blocks.



- Now use the thirty two (32) fabric **J** templates **3** and fabrics **A,B,C** and **D** templates **4** to create 5½" blocks..
- You should have eight (8) blocks for each combination of fabrics.

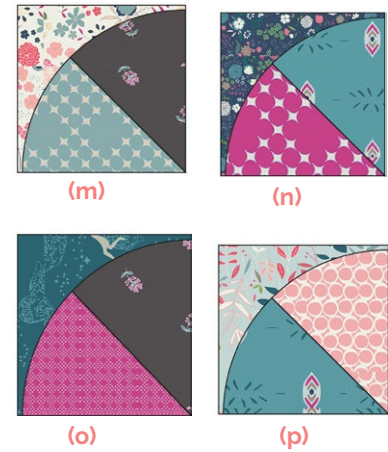


- Create four (4) mirrored blocks.

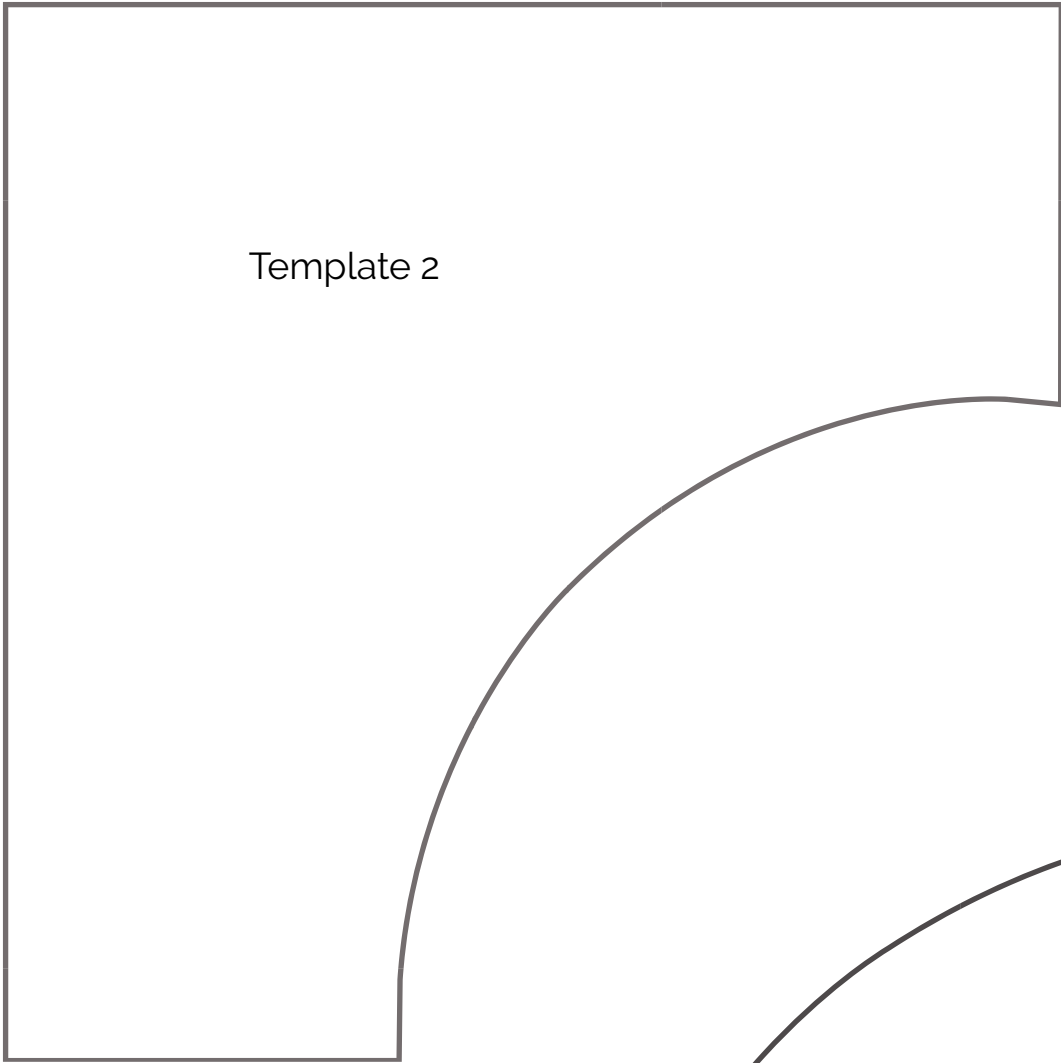
- Proceed with **B,C** and **D** fabric combinations



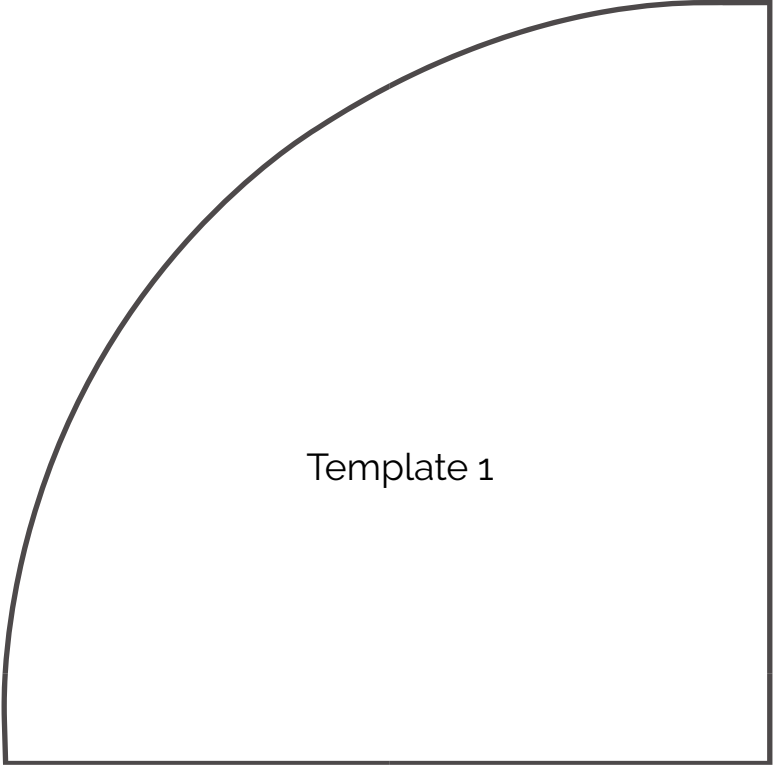
- Remember to create four (4) blocks semicircle facing left and four (4) blocks semicircle facing right..
- Proceed with the **a,b,c** and **d** template **4** semicircles and templates **3** form fabrics **A,B,C** and **D**.
- There should be four (4) blocks for each fabric combination. Two (2) blocks semicircle facing left and two (2) blocks semicircle facing right..
- Refer to the diagram below to create the following combinations.



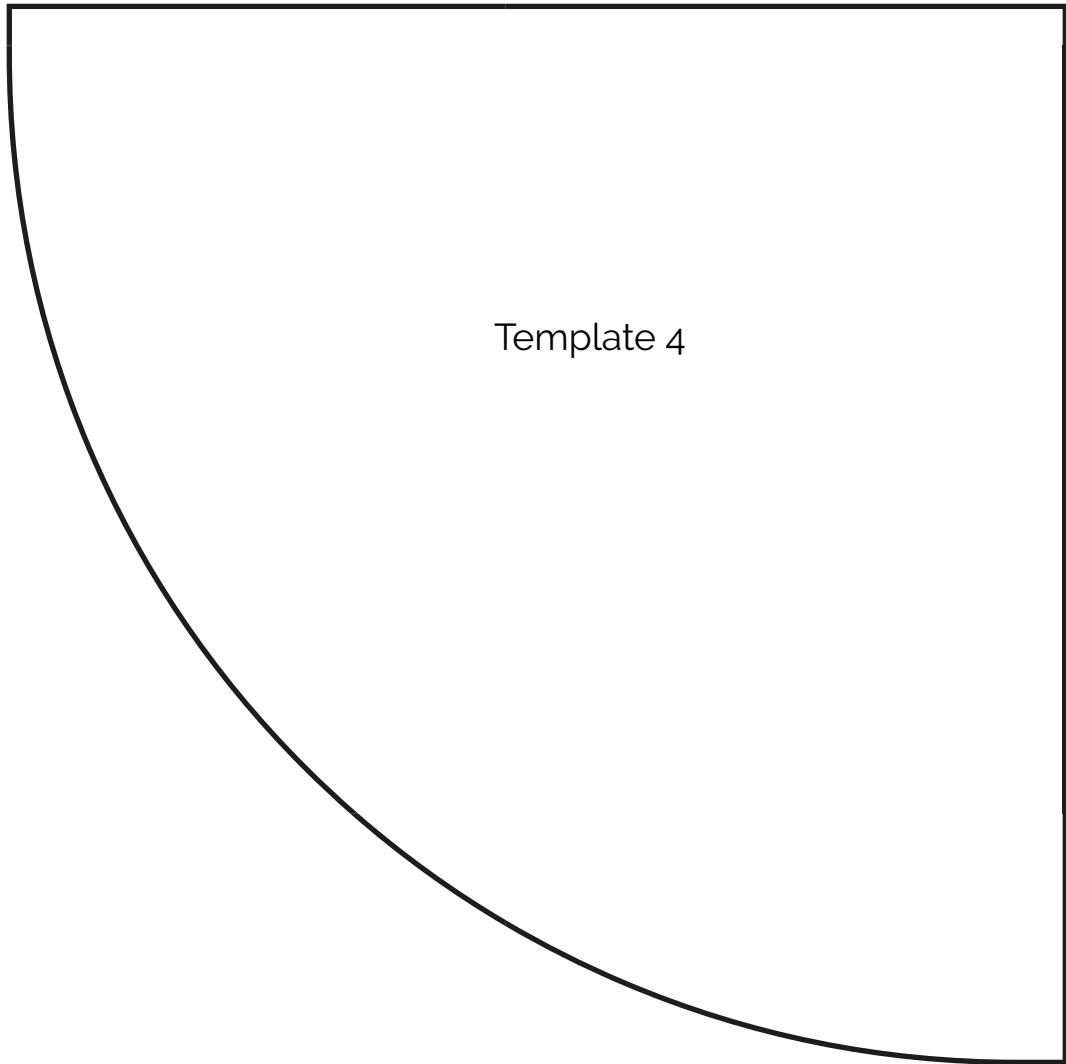
- Once you finish all your blocks, start with the final assembly! Each block has been assigned with a letter to facilitate the quilt construction. (Combinations from **e** to **p**, refer to the block assembly above).
- Refer to diagram below for proper fabric placement and attachment.



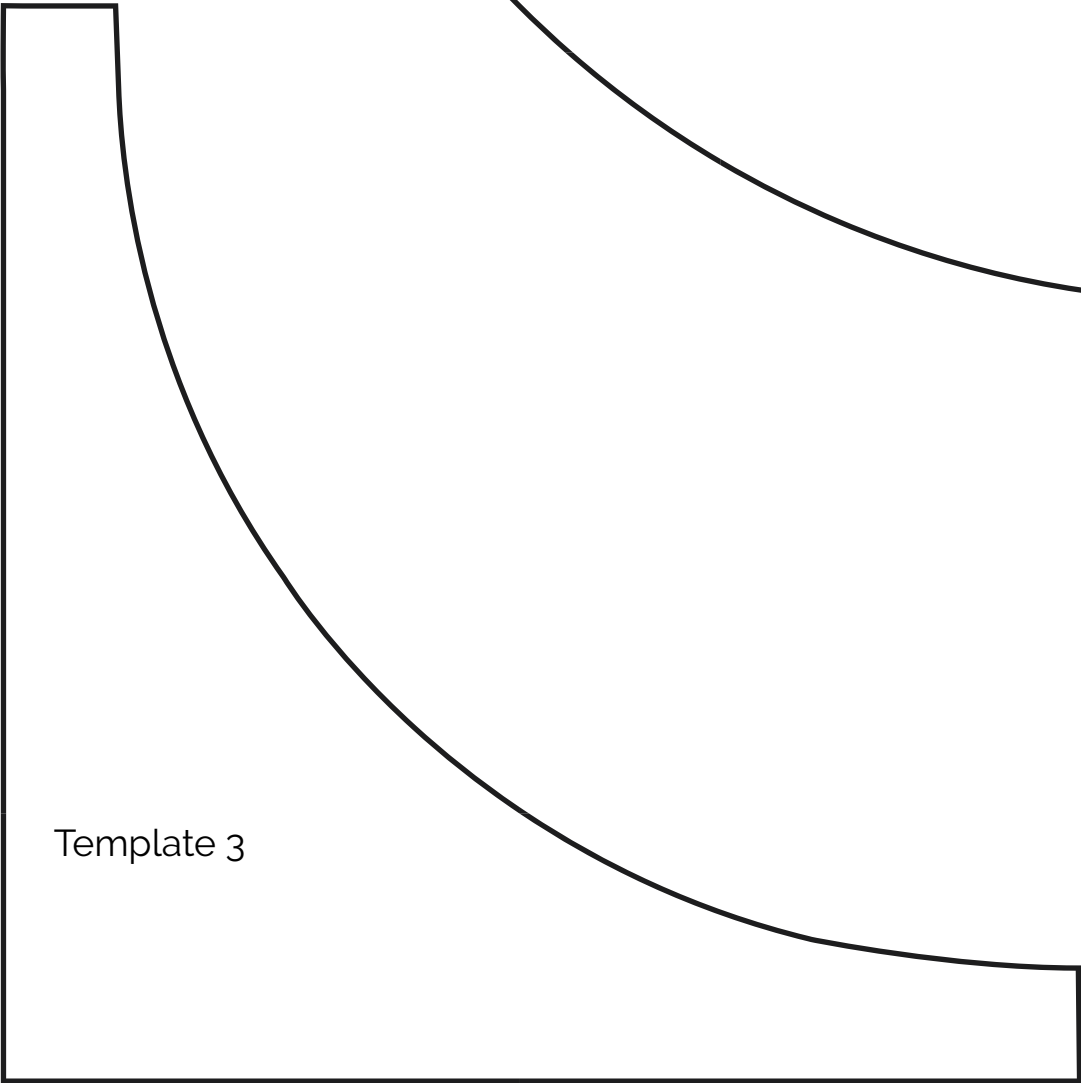
Template 2



Template 1



Template 4



Template 3



artgalleryfabrics.com

NOTE: While all possible care has been taken to ensure the accuracy of this pattern, We are not responsible for printing errors or the way in which individual work varies.

Please read instructions carefully before starting the construction of this quilt. If desired, wash and iron your fabrics before starting to cut.

© 2018 Courtesy of Art Gallery Quilts LLC. All Rights Reserved.