

instinct paths



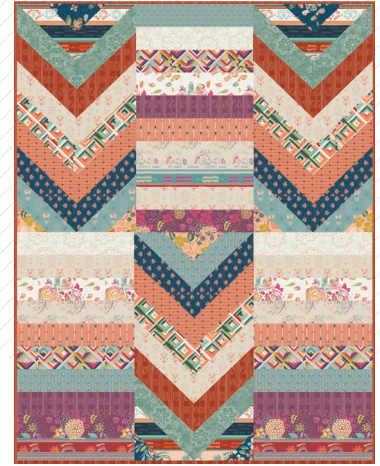


instinct paths

Maureen
Cracknell

QUILT DESIGNED BY MAUREEN CRACKNELL

Fleet & Flourish



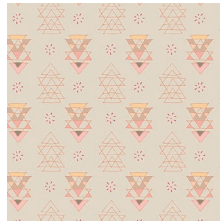
COLOR OPTION

FABRICS DESIGNED BY MAUREEN CRACKNELL

INNOCENCY



FLO-8120
WHAT AWAITS PROFOUNDLY



FLO-8121
MINIMENTS RAW



FLO-8123
ROADSIDE GUIDES ASTER



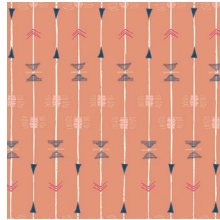
FLO-8124
THRIVING THREADS LIGHT



FLO-8125
WREATHED WHIFF



FLO-8126
LACE IN BLOOM CLOUD



FLO-8127
ALL PATHS SUNLIT



FLO-8128
SWIFTING FLORA FOND

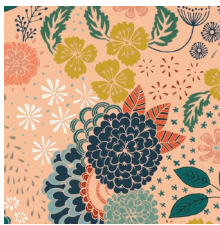


FLO-8129
EXPANDED AIM VIOLET



FLO-81301
GENTLE MANTLE FLAME

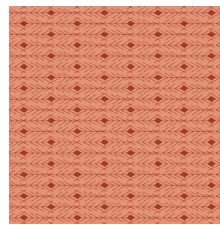
TENACITY



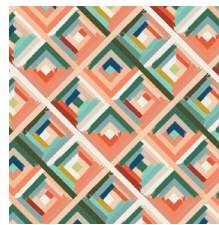
FLO-9120
WHAT AWAITS ABOVE



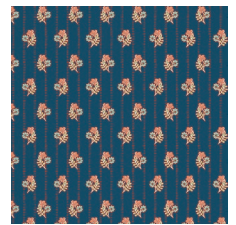
FLO-9121
MINIMENTS UNPOLISHED



FLO-9122
SACRED AMULETS



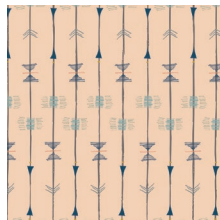
FLO-9123
ROADSIDE GUIDES OPAL



FLO-9124
THRIVING THREADS DEEP



FLO-9126
LACE IN BLOOM SKY



FLO-9127
ALL PATHS CLEAR



FLO-9128
SWIFTING FLORA SWELL



FLO-9129
EXPANDED AIM TERRA



FLO-9130
GENTLE MANTLE LAND



instinct paths

FINISHED SIZE | 60" x 80"

FABRIC REQUIREMENTS

Fabric A	FLO-8124	1/3 YD.
Fabric B	FLO-8126	1/3 YD.
Fabric C	FLO-8123	1/3 YD.
Fabric D	FLO-8128	1/3 YD.
Fabric E	FLO-8129	1/3 YD.
Fabric F	FLO-8127	1/3 YD.
Fabric G	FLO-8125	1/3 YD.
Fabric H	FLO-8130	1/3 YD.
Fabric I	FLO-8121	1 1/8 YD.
Fabric J	FLO-8120	1/3 YD.
Fabric K	FLO-9128	7/8 YD.
Fabric L	FLO-9130	7/8 YD.
Fabric M	FLO-9126	7/8 YD.
Fabric N	FLO-9129	1 1/8 YD.
Fabric O	FLO-9123	7/8 YD.
Fabric P	FLO-9122	7/8 YD.
Fabric Q	FLO-9124	7/8 YD.
Fabric R	FLO-9121	7/8 YD.
Fabric S	FLO-9120	7/8 YD.

BACKING FABRIC
FLO-8126 5 yds. *(Suggested)*

BINDING FABRIC
FLO-9129 (Fabric **N**) *(included)*

CUTTING DIRECTIONS

1/4" seam allowances are included.
WOF means width of fabric.

Three (3) 20 1/2" x 4 1/2" strips from fabrics **A-J**

Six (6) WOF x 4 1/2" strips from fabrics **K-S**

Six (6) WOF x 4 1/2" strips from fabrics **I**

CONSTRUCTION

Sew all rights sides together with 1/4" seam allowance.

- Take one 20 1/2" x 4 1/2" from fabrics **A-J**
- Attach them together in the order **ABCDEFGHIJ**
Press seams open.

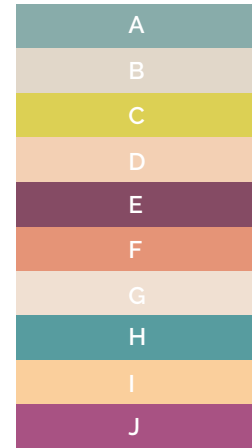


DIAGRAM 1

- Take one 20 1/2" x 4 1/2" from fabrics **A-J**
- Attach them together in the order **BIDGFAEJH**
Press seams open.
- Repeat the previous step with the remaining 20 1/2" strips.



DIAGRAM 2

- Take one WOF x 4 1/2" from fabrics **K-S** and one from fabric **I**.
- Attach them together in the order **KLMNIOPQRS**
Press seams open.
- Repeat the previous step until you get a total of six of this strips combination.



DIAGRAM 3

- Using a clear quilting ruler cut a $10\frac{1}{2}$ " x $40\frac{1}{2}$ " bias in a 45° , align it to the center then the top corner to the left edge of the piece and the bottom to the right edge.
- Repeat the previous step until you get a total of three of this strips.

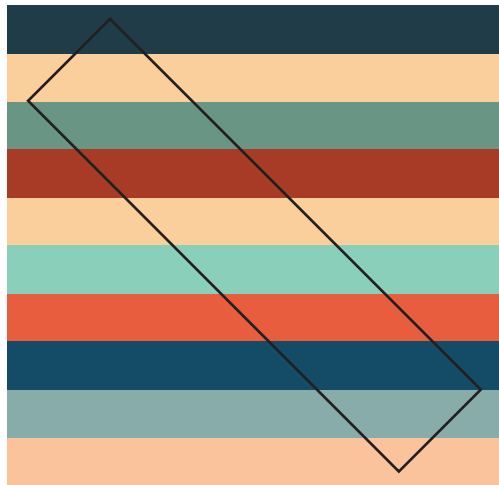


DIAGRAM 4

- Repeat the same procedure done in diagram 4 but this time the 45° strip will be a reflection of the previous one.
- Align it to the center then the top corner to the right edge of the piece and the bottom to the left edge.
- Repeat the previous step until you get a total of three of this strips.

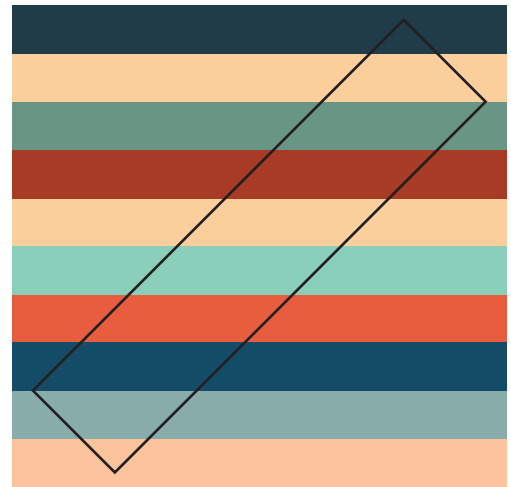


DIAGRAM 5

- Take two of the 45° strips (they should be opposite to each other)
- Attach them together starting with fabric **S** on top creating a chevron pattern.
- Set aside.

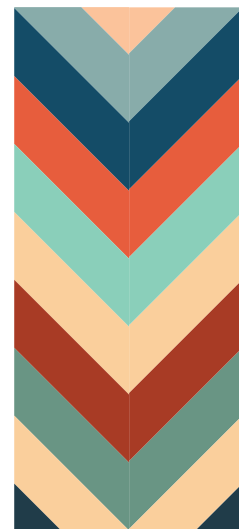


DIAGRAM 6

- With the remaining 45° strips make a chevron pattern again attaching them together but this time start with fabric **K** on top.
- You should have two of these.



DIAGRAM 7

ASSEMBLING THE TOP

Sew all rights sides together with 1/4" seam allowance. Press open.

- Follow the cover picture for blocks placement.
- Arrange blocks in two rows of three blocks each.
- Sew blocks in each row together, press seams to one side, alternating direction every other row.
- Sew Rows together to complete quilt top. Press seams open.

QUILT ASSEMBLY

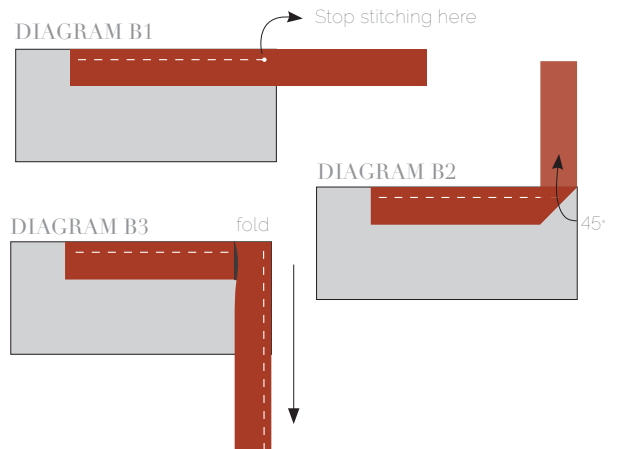
Sew rights sides together.

- Place BACKING FABRIC on a large surface wrong side up. Stretch it with masking tape against that surface.
- Place BATTING on top of backing fabric.
- Place TOP on top of the batting with right side facing up. Smooth away wrinkles using your hands.
- Pin all layers together and baste with basting thread, using long stitches. You can also use safety pins to join the layers.
- Machine or hand quilt starting at the center and working towards the corners. Remember that quilting motifs are a matter of personal preference. Have fun choosing yours!
- After you finished, trim excess of any fabric or batting, squaring the quilt to proceed to bind it.

BINDING

Sew rights sides together.

- Cut enough strips 1 1/2' wide by the width of the fabric **N** to make a final strip 290' long. Start sewing the binding strip in the middle of one of the sides of the quilt, placing the strip right side down and leaving an approximated 5' tail. Sew with 1/4" seam allowance (using straight stitch), aligning the strip's raw edge with the quilt top's raw edge.
- Stop stitching 1/4' before the edge of the quilt (**DIAGRAM B 1**). Clip the threads. Remove the quilt from under the machine presser foot. Fold the strip in a motion of 45° and upward, pressing with your fingers (**DIAGRAM B2**). Hold this fold with your finger, bring the strip down in line with the next edge, making a horizontal fold that aligns with the top edge of the quilt (**DIAGRAM B3**). Start sewing at 1/4' of the border, stitching all the layers. Do the same in the four corners of the quilt.
- Stop stitching before you reach the last 5 or 6 inches. Cut the threads and remove the quilt from under the machine presser foot. Lay the loose ends of the binding flat along the quilt edge, folding the ends back on themselves where they meet. Press them together to form a crease. Using this crease as the stitching line, sew the two open ends of the binding with right sides together (you can help yourself marking with a pencil if the crease is difficult to see).
- Trim seam to 1/4" and press open. Complete the sewing. Turn binding to back of the quilt, turn raw edge inside and stitch by hand using blind stitch.





artgalleryfabrics.com

NOTE: While all possible care has been taken to ensure the accuracy of this pattern, We are not responsible for printing errors or the way in which individual work varies. Please read instructions carefully before starting the construction of this quilt. If desired, wash and iron your fabrics before starting to cut.

© 2015 Courtesy of Art Gallery Quilts LLC. All Rights Reserved.