



Hi (bear) nate



Hi (bear) nate

Bonnie Christine

QUILT DESIGNED BY BONNIE CHRISTINE & MAXINE RAMEY

maxine makes



COLOR OPTION

hello, bear

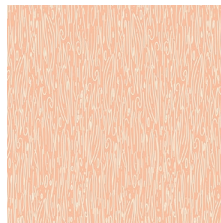


FABRICS DESIGNED BY BONNIE CHRISTINE

STONE



HBR-4430
OH, HELLO FOG



HBR-4431
WILDWOOD NECTAR



HBR-4432
MOREL GROVE POWDER



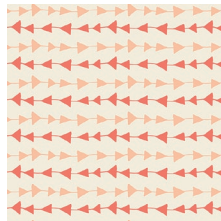
HBR-4433
FIREFLY SIGH



HBR-4434
BUCK FOREST MIST



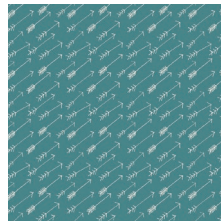
HBR-4435
LEAFLET EUCALYPTUS



HBR-4436
FOLLOW ME PEACH



HBR-4437
TIMBERLAND TRUNK



HBR-4438
ADVENTURE SPRINGS



HBR-4439
SUMMIT DAWN

TIMBER



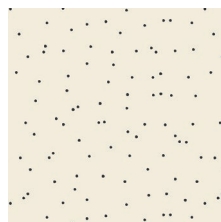
HBR-5430
OH, HELLO MEADOW



HBR-5431
WILDWOOD BIRCH



HBR-5432
MOREL GROVE POND



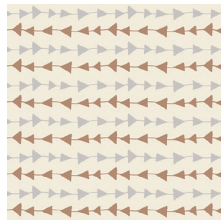
HBR-5433
FIREFLY WHISPER



HBR-5434
BUCK FOREST NIGHT



HBR-5435
LEAFLET DAWN



HBR-5436
FOLLOW ME MOONLIGHT



HBR-5437
TIMBERLAND DEW



HBR-5438
ADVENTURE BARK



HBR-5439
SUMMIT TWILIGHT



Hi (bear) nate

FINISHED SIZE | 53" x 60"



FABRIC REQUIREMENTS

TIMBER

- Fabric **A** HBR-5430 5/8 yd.
- Fabric **B** HBR-5432 1/3 yd.
- Fabric **C** HBR-5433 3 1/4 yd.
- Fabric **D** HBR-5435 1/3 yd.
- Fabric **E** HBR-5436 1/3 yd.
- Fabric **F** HBR-5437 1/3 yd.
- Fabric **G** HBR-5438 1/3 yd.
- Fabric **H** HBR-5439 1/3 yd.

BACKING FABRIC
HBR-5434 4 yds. *(suggested)*

BINDING FABRIC
HBR-5433 (Fabric **G**) *(included)*

STONE

- Fabric **A** HBR-4430 5/8 yd.
- Fabric **B** HBR-4432 1/3 yd.
- Fabric **C** HBR-4433 3 1/4 yd.
- Fabric **D** HBR-4435 1/3 yd.
- Fabric **E** HBR-4436 1/3 yd.
- Fabric **F** HBR-4437 1/3 yd.
- Fabric **G** HBR-4438 1/3 yd.
- Fabric **H** HBR-4439 1/3 yd.

BACKING FABRIC
HBR-4434 4 yds. *(suggested)*

BINDING FABRIC
HBR-4433 (Fabric **G**) *(included)*

CUTTING DIRECTIONS

¼" seam allowances are included.

TOOLS NEEDED

10" 60° Triangle Ruler *or* use template by taping pieces together at the notches.

- Cut Five (5) triangles from Fabrics **A**
- Cut Two (2) triangles from Fabric **B**
- Cut Three (3) triangles from Fabric **D**
- Cut Two (2) triangle from Fabric **E**
- Cut One (1) triangles from Fabric **F**
- Cut Two (2) triangles from Fabric **G**
- Cut Three (3) triangles from Fabric **H**

BACKGROUND

- Using the triangle ruler, cut 36 triangles from Fabric **C**.
- Cut Twelve (12) half triangles from Fabric **C**
 - 6 using the right center line and 6 using the left center line.

BORDERS

- Refer to Border instructions in assembling the top.

ASSEMBLING THE TOP

Sew all rights sides together with ¼" seam allowance. Press open.

- Arrange the triangles together in rows. You will have 6 rows of triangles with a half triangle placed on each end toward the border.
- Place triangles in alternating order, one triangle pointing down the other pointing up.
- Continue to sew the row, ending with a half triangle.



DIAGRAM 1

- To sew the rows together, place the first two pieces right sides together. **DIAGRAM 2**

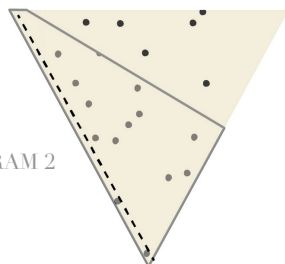


DIAGRAM 2

- Sew all 6 rows together, then stitch the rows together. Following the quilt illustration as a guide.
- **BORDERS:** Cut 2 ½" strips for the top and bottom borders. Measuring through the center of the quilt, determine the width. Cut two border strips at this measurement. Sew the borders on, pressing seams toward the border.



DIAGRAM 3

QUILT ASSEMBLY

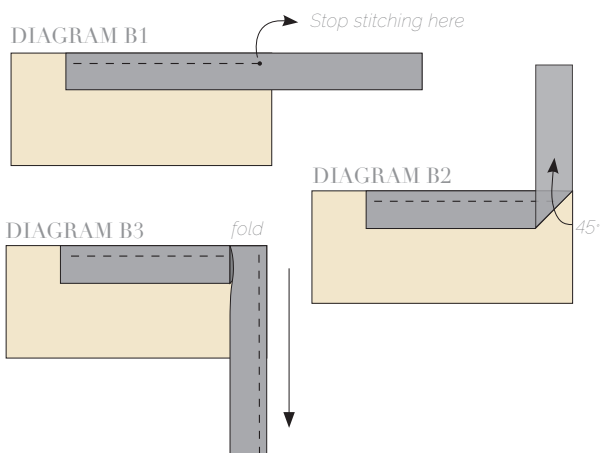
Sew rights sides together.

- Place BACKING FABRIC on a large surface wrong side up. Stretch it with masking tape against that surface.
- Place BATTING on top of backing fabric.
- Place TOP on top of the batting with right side facing up. Smooth away wrinkles using your hands.
- Pin all layers together and baste with basting thread, using long stitches. You can also use safety pins to join the layers.
- Machine or hand quilt starting at the center and working towards the corners. Remember that quilting motifs are a matter of personal preference. Have fun choosing yours!
- After you finished, trim excess of any fabric or batting, squaring the quilt to proceed to bind it.

BINDING

Sew rights sides together.

- Cut enough strips 1½' wide by the width of the fabric **G** to make a final strip 194' long. Start sewing the binding strip in the middle of one of the sides of the quilt, placing the strip right side down and leaving an approximated 5' tail. Sew with ¼' seam allowance (using straight stitch), aligning the strip's raw edge with the quilt top's raw edge.
- Stop stitching ¼' before the edge of the quilt (**DIAGRAM B1**). Clip the threads. Remove the quilt from under the machine presser foot. Fold the strip in a motion of 45° and upward, pressing with your fingers (**DIAGRAM B2**). Hold this fold with your finger, bring the strip down in line with the next edge, making a horizontal fold that aligns with the top edge of the quilt (**DIAGRAM B3**). Start sewing at ¼' of the border, stitching all the layers. Do the same in the four corners of the quilt.
- Stop stitching before you reach the last 5 or 6 inches. Cut the threads and remove the quilt from under the machine presser foot. Lay the loose ends of the binding flat along the quilt edge, folding the ends back on themselves where they meet. Press them together to form a crease. Using this crease as the stitching line, sew the two open ends of the binding with right sides together (you can help yourself marking with a pencil if the crease is difficult to see).
- Trim seam to ¼' and press open. Complete the sewing. Turn binding to back of the quilt, turn raw edge inside and stitch by hand using blind stitch.



XX

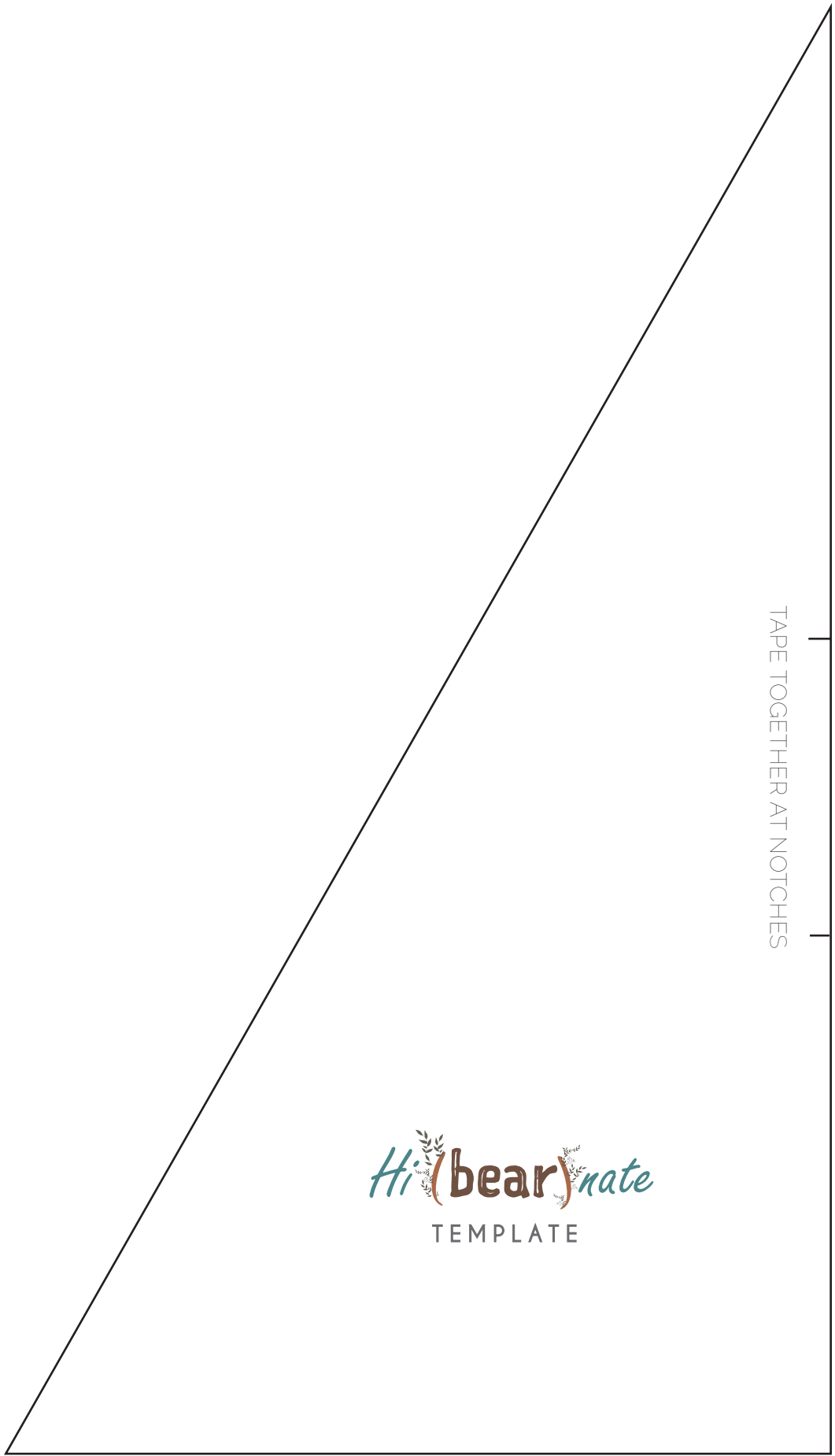
Congratulations & enjoy

XX



artgalleryfabrics.com

NOTE: While all possible care has been taken to ensure the accuracy of this pattern, We are not responsible for printing errors or the way in which individual work varies. Please read instructions carefully before starting the construction of this quilt. If desired, wash and iron your fabrics before starting to cut.



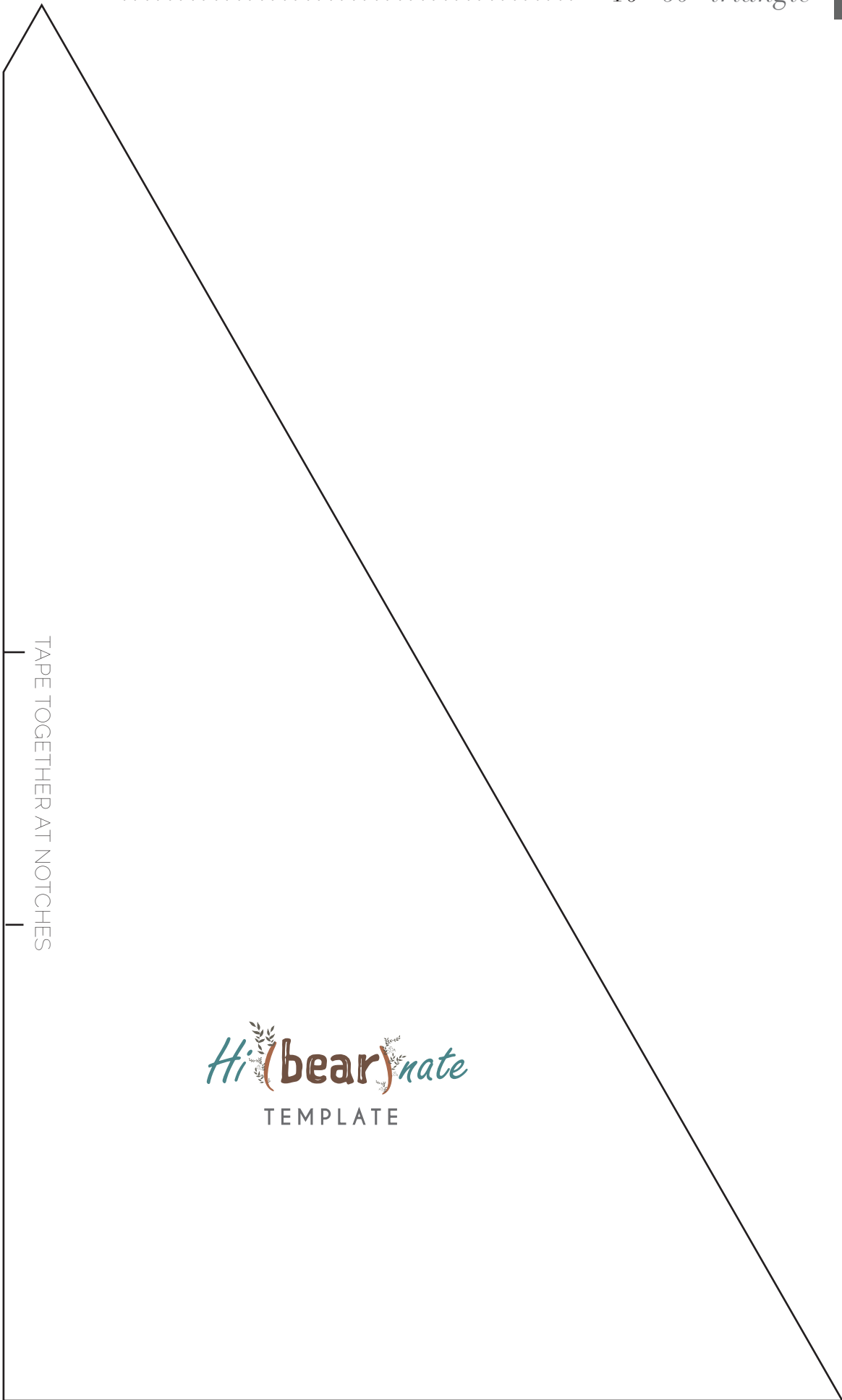
TAPE TOGETHER AT NOTCHES

Hi (bear) nate
TEMPLATE

XX

10" 60° triangle

TEMPLATE



TAPE TOGETHER AT NOTCHES

Hi(bear)nate
TEMPLATE