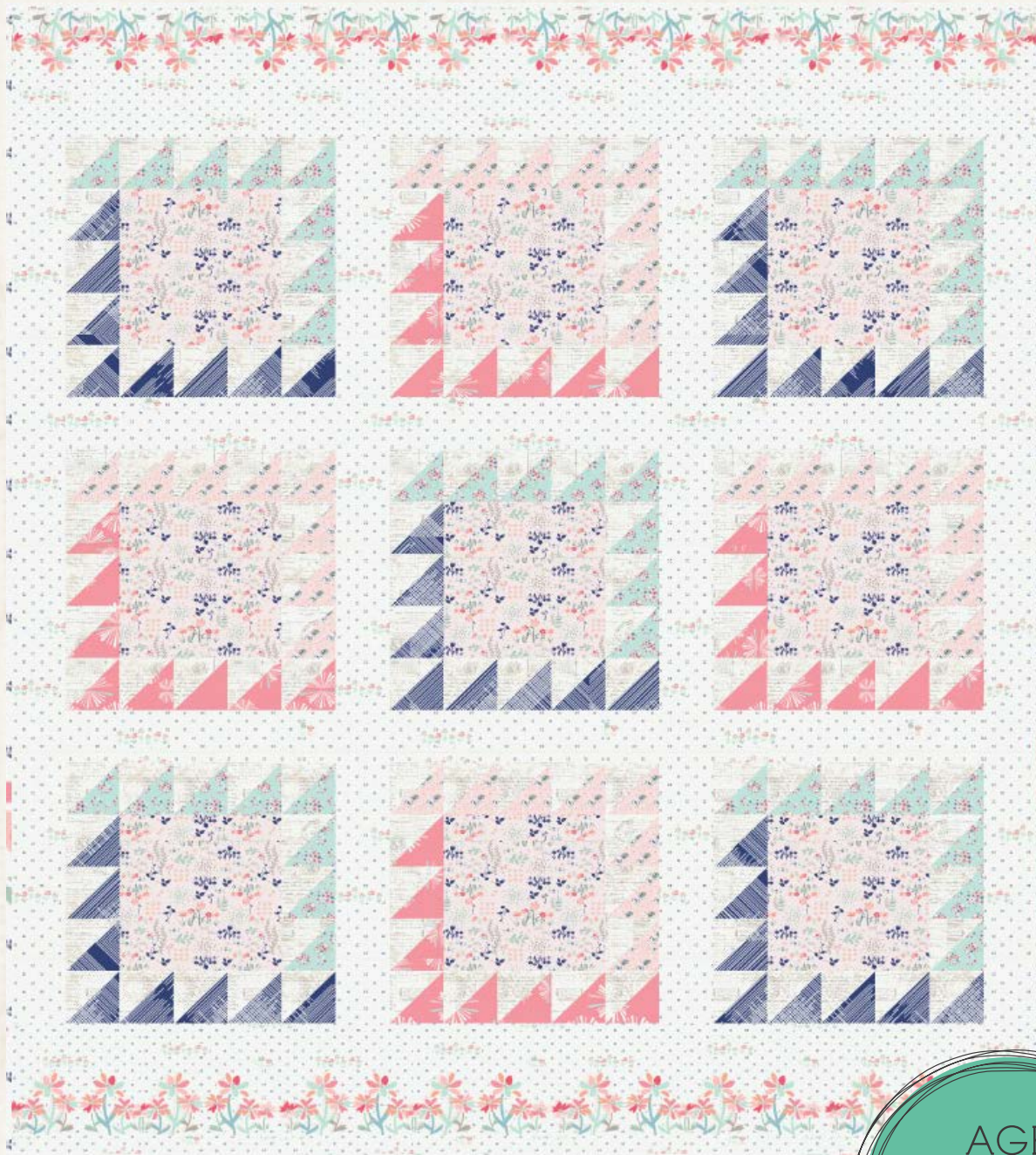
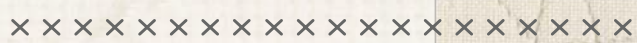




# BOOK ENDS



AGF  
LIMITED  
edition





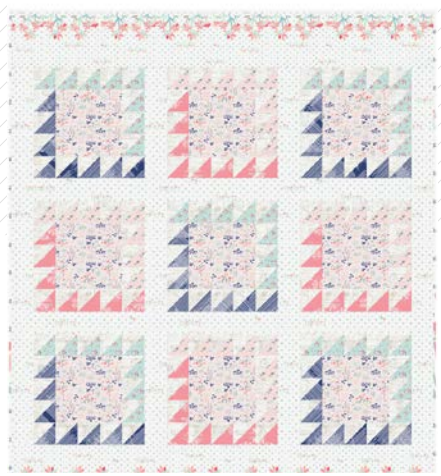
# BOOK ENDS

AMYSINIBALDI

QUILT DESIGNED BY AMY SINIBALDI



FABRICS DESIGNED BY AMY SINIBALDI



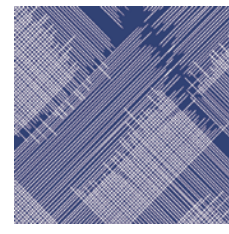
COLOR OPTION



**PPE-340**  
HAPPILY EVER AFTER



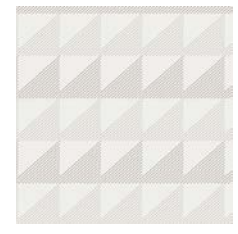
**PPE-341**  
COSETTE



**PPE-342**  
MANUSCRIPT



**PPE-343**  
LIBRARY GARDENS



**PPE-344**  
PARCHMENT



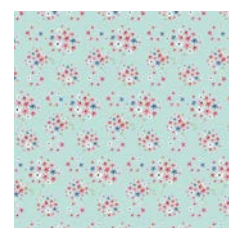
**PPE-345**  
PAPER CIRCLES



**PPE-346**  
QUOTED



**PPE-347**  
STAMPED



**PPE-348**  
EPONINE



**PPE-349**  
GATHERING BLOOMS PANEL



# BOOK ENDS

FINISHED SIZE | 38" x 44"

## FABRIC REQUIREMENTS

Fabric <b>A</b>	PPE-349	2¼ yd.
Fabric <b>B</b>	PPE-343	½ yd.
Fabric <b>C</b>	PPE-347	½ yd.
Fabric <b>D</b>	PPE-348	¼ yd.
Fabric <b>E</b>	PPE-342	¼ yd.
Fabric <b>F</b>	PPE-345	¼ yd.
Fabric <b>G</b>	PPE-341	¼ yd.

### BACKING FABRIC

PPE-349 1 ½ yd. *(Suggested)*

### BINDING FABRIC

PPE-349 (Fabric **A**) *(included)*

## CUTTING DIRECTIONS

¼" seam allowances are included.  
WOF means width of fabric.

- Two (2) 5½' x 38½' strips from fabrics **A**
- Four (4) 34½' x 2½' strips from fabrics **A**
- Six (6) 10½' x 2½' strips from fabric **A**
- Nine (9) 6 ½' squares from fabric **B**
- Seventy-two (72) 2⅞' squares from fabric **C**
- Twenty (20) 2⅞' squares from fabric **D**
- Twenty (20) 2⅞' squares from fabric **E**
- Sixteen (16) 2⅞' squares from fabric **F**
- Sixteen (16) 2⅞' squares from fabric **G**

## CONSTRUCTION

Sew all rights sides together with ¼" seam allowance.

- Using a water-soluble marker or a pencil, mark a diagonal line across the wrong side of all the 2⅞' squares from fabrics **D-G**.

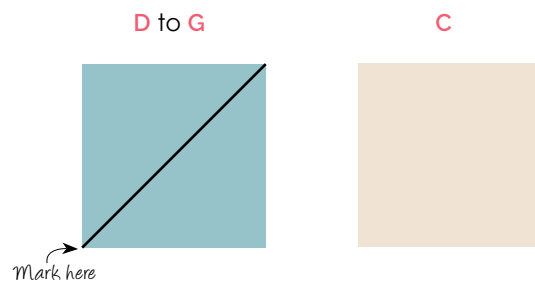


DIAGRAM 1

- Place one of the marked squares right sides together with an unmarked square from fabric **C**
- Sew ¼' on both sides of the marked line.
- Cut piece in half along the drawn line. Press seams open..
- Pair up the rest of the marked squares (**D-G**) with the unmarked squares (**C**) repeat to make a total of 144 half square triangles.

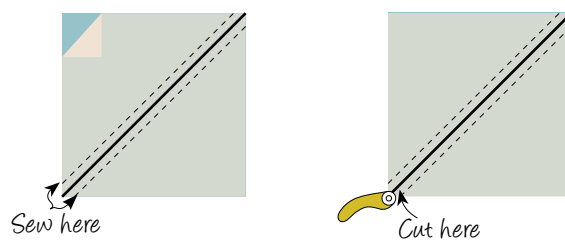


DIAGRAM 2

- There is a total of nine blocks in this quilt top.
- The blocks are constructed in the same way but with different fabric combinations.
- Starting with the construction of combination a take eight **CE** HST, eight **CD** HST and one  $6\frac{1}{2}$ ' square from fabric **B**.
- Attach three **CD** HST together horizontally and three **CE** HST as well in order to end up with a  $6\frac{1}{2}$ ' strip of each HST combination.



DIAGRAM 3

- Take the  $6\frac{1}{2}$ ' square from fabric **B** and attach the **CD** strip on the top edge of it.
- Attach the **CE** strip on the bottom edge of **B** square.



DIAGRAM 4

- Now, attach five **CD** HST together vertically and five **CE** HST as well in order to end up with a  $10\frac{1}{2}$ ' strip of each HST combination.
- Attach the **CD** strip on the right edge of the previously sewn piece and then attach the **CE** strip to the left edge.
- Make five of this block combination.

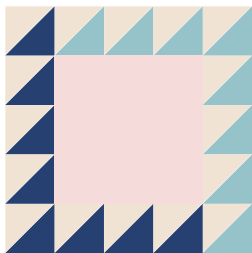


DIAGRAM 5

- Use the remaining HTS for the construction of combination b block.
- The construction will be the same but with different fabric placement.

- Start with eight **CF** HST, eight **CG** HST and one  $6\frac{1}{2}$ ' square from fabric **B**.
- Attach three **CF** HST together horizontally and three **CG** HST as well in order to end up with a  $6\frac{1}{2}$ ' strip of each HST combination.
- Take the  $6\frac{1}{2}$ ' square from fabric **B** and attach the **CG** strip on the top edge of it.
- Attach the **CF** strip on the bottom edge of **B** square.
- Now, attach five **CF** HST together vertically and five **CG** HST as well in order to end up with a  $10\frac{1}{2}$ ' strip of each HST combination.
- Attach the **CG** strip on the right edge of the previously sewn piece and then attach the **CF** strip to the left edge.
- Make Three of this block combination.

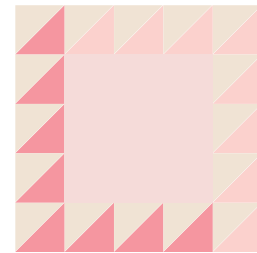


DIAGRAM 6

- There are three columns that need to be sewn in order to complete this quilt top.
- Take two a combination blocks, one b combination block and two  $10\frac{1}{2}$ ' x  $2\frac{1}{2}$ ' strips from fabric **A**.
- Attach them alternating the strips in between the blocks in the following order: a-A-b-A-a
- Make one more a-A-b-A-a column.

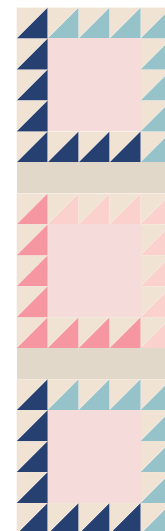


DIAGRAM 7

- For the last column take the remaining  $10\frac{1}{2}' \times 2\frac{1}{2}'$  strips from fabric **A** and blocks.
- Attach them alternating the strips in between the blocks in the following order: b-A-a-A-b

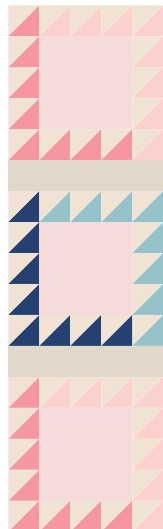
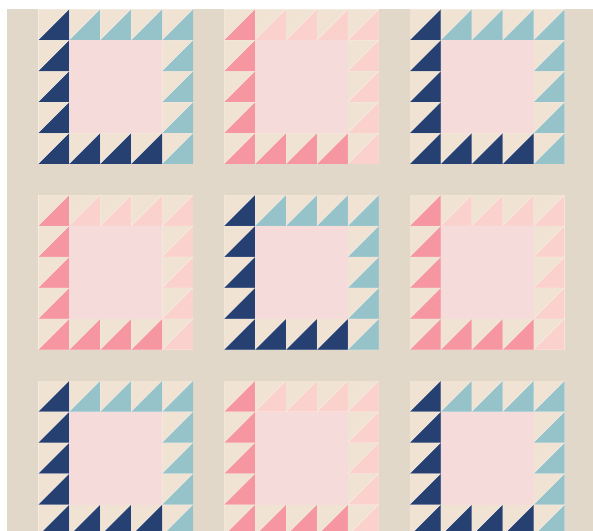


DIAGRAM 8

## ASSEMBLING THE TOP

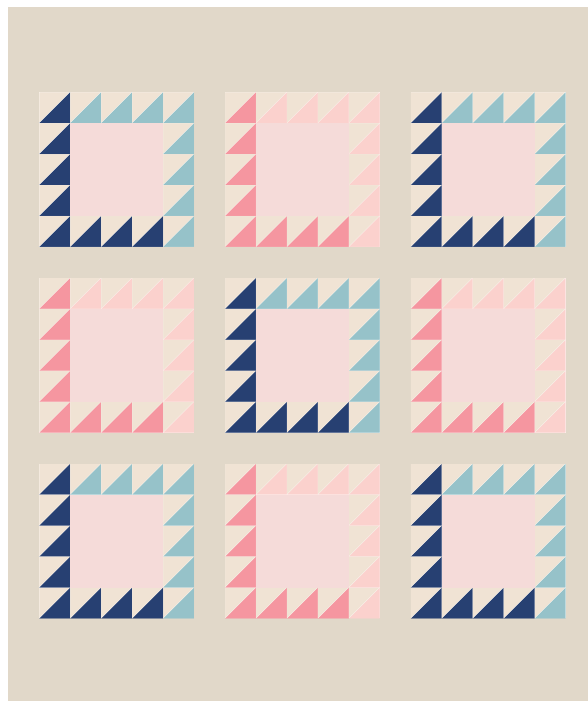
*Sew all rights sides together with  $\frac{1}{4}$ " seam allowance. Press open.*

- Take four  $34\frac{1}{2}' \times 2\frac{1}{2}'$  strips from fabric **A** and start attaching them together to the columns made in previous steps.
- Start with an **A** strip and continue adding the columns and strips alternating their order until you end up with a strip.
- Use cover picture as a reference for fabrics placements.



XX

- For the last step of this quilt top construction attach the  $5\frac{1}{2}' \times 38\frac{1}{2}'$  strips from fabric **A** to the top and bottom edges.



## QUILT ASSEMBLY

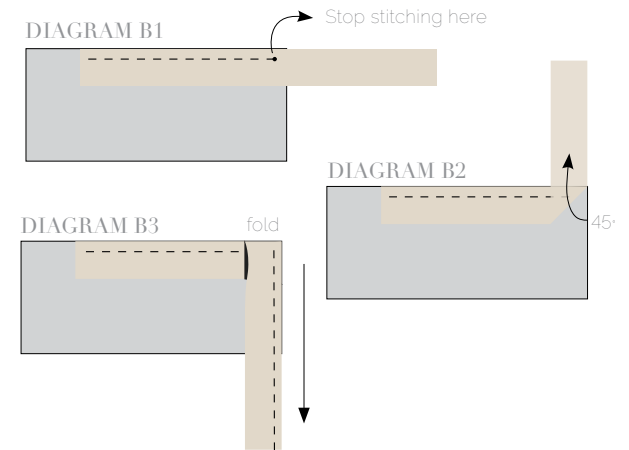
*Sew rights sides together:*

- Place BACKING FABRIC on a large surface wrong side up. Stretch it with masking tape against that surface.
- Place BATTING on top of backing fabric.
- Place TOP on top of the batting with right side facing up. Smooth away wrinkles using your hands.
- Pin all layers together and baste with basting thread, using long stitches. You can also use safety pins to join the layers.
- Machine or hand quilt starting at the center and working towards the corners. Remember that quilting motifs are a matter of personal preference. Have fun choosing yours!
- After you finished, trim excess of any fabric or batting, squaring the quilt to proceed to bind it.

# BINDING

*Sew rights sides together.*

- Cut enough strips  $1\frac{1}{2}$ ' wide by the width of the fabric **A** to make a final strip  $175'$  long. Start sewing the binding strip in the middle of one of the sides of the quilt, placing the strip right side down and leaving an approximated  $5'$  tail. Sew with  $\frac{1}{4}'$  seam allowance (using straight stitch), aligning the strip's raw edge with the quilt top's raw edge.
- Stop stitching  $\frac{1}{4}'$  before the edge of the quilt (**DIAGRAM B1**). Clip the threads. Remove the quilt from under the machine presser foot. Fold the strip in a motion of  $45^\circ$  and upward, pressing with your fingers (**DIAGRAM B2**). Hold this fold with your finger, bring the strip down in line with the next edge, making a horizontal fold that aligns with the top edge of the quilt (**DIAGRAM B3**). Start sewing at  $\frac{1}{4}'$  of the border, stitching all the layers. Do the same in the four corners of the quilt.



- Stop stitching before you reach the last 5 or 6 inches. Cut the threads and remove the quilt from under the machine presser foot. Lay the loose ends of the binding flat along the quilt edge, folding the ends back on themselves where they meet. Press them together to form a crease. Using this crease as the stitching line, sew the two open ends of the binding with right sides together (you can help yourself marking with a pencil if the crease is difficult to see).
- Trim seam to  $\frac{1}{4}'$  and press open. Complete the sewing. Turn binding to back of the quilt, turn raw edge inside and stitch by hand using blind stitch.



[artgalleryfabrics.com](http://artgalleryfabrics.com)

*NOTE: While all possible care has been taken to ensure the accuracy of this pattern. We are not responsible for printing errors or the way in which individual work varies. Please read instructions carefully before starting the construction of this quilt. If desired, wash and iron your fabrics before starting to cut.*

© 2015 Courtesy of Art Gallery Quilts LLC. All Rights Reserved.