



# Dear Dad

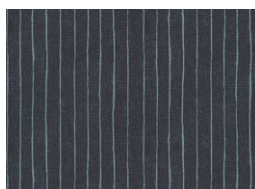
DESIGNED BY AGFstudio

## AGF Holiday BUNDLES

### DEAR DAD EDITION



CBHF0602  
12 FAT QUARTER BUNDLE



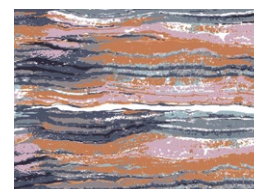
**Fabric A**  
SNT-33100  
EIDELWEISS JOY



**Fabric B**  
MAF-79203  
COVENT GARDEN



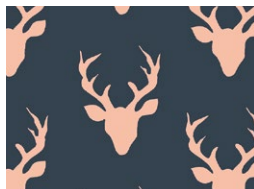
**Fabric C**  
TFS-99110  
GATHERING DITSY



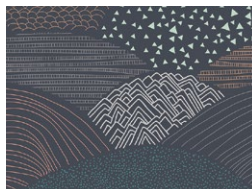
**Fabric D**  
DSE724  
ABYSS



**Fabric E**  
FUS-SD-1102  
FLOWERED MEDLEY SPLENDID



**Fabric F**  
TFS-99106  
RETRO PRAIRIE BLUSH



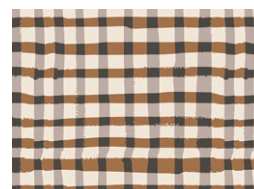
**Fabric G**  
OPH-14358  
UNIQUE BEAUTY VIVID



**Fabric H**  
FUS-AD-1603  
TARTAN DISTRICT



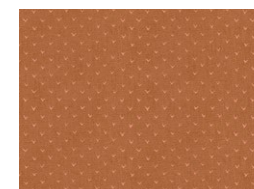
**Fabric I**  
EVE-29805  
ROSEFIELD QUARTZ



**Fabric J**  
FE-528  
BUBBLEGUM



**Fabric K**  
SNT-33102  
JOSEPHINE POETIC



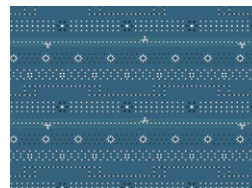
**Fabric L**  
MAF-79201  
ROYAL ARCADE



**Fabric M**  
PE-487  
DENIM BLUE



**Fabric N**  
DSE730  
CROCHET BOUND



**Fabric O (Binding)**  
BIN25113  
FLUTTERDUST SEVEN



**BACKING**  
PE-524  
VINTAGE WALNUT



FEEL THE DIFFERENCE

© 2024 Courtesy of Art Gallery Quilts LLC. All Rights Reserved.

# Dear Dad

DESIGNED BY *AGFstudio*

FINISHED SIZE | 65" x 65"

## FABRIC REQUIREMENTS

Fabric <b>A</b>	ISO011	FQ
Fabric <b>B</b>	HBR439	FQ
Fabric <b>C</b>	K95230	FQ
Fabric <b>D</b>	TWT20218	FQ
Fabric <b>E</b>	SDE715	FQ
Fabric <b>F</b>	LMB28729	FQ
Fabric <b>G</b>	EAR33950	FQ
Fabric <b>H</b>	TWT20207	FQ
Fabric <b>I</b>	ENV617786	FQ
Fabric <b>J</b>	EAR33959	FQ
Fabric <b>K</b>	FUS-W-602	FQ
Fabric <b>L</b>	FUSLF2208	FQ
Fabric <b>M</b>	PE465	½ yd.
Fabric <b>N</b>	DSE73	1⅞" yd.
Fabric <b>O</b>	BIN25113	⅝" yd.

### BINDING FABRIC

Fabric **O** BIN25113 *(Included)*

### BACKING FABRIC

Fabric **P** PE524 4 yd. *(Suggested)*

## CUTTING DIRECTIONS

¼" seam allowances are included.  
WOF means width of the fabric.

### Fabric A

- Two (2) Template 2 right side.
- Two (2) Template 2 left side.
- Two (2) 6" squares.
- Two (2) 5½" squares.
- Two (2) 2" squares.

### Fabric B

- One (1) Template 1.
- One (1) Template 2 right.
- One (1) Template 2 left.
- One (1) 6" square.
- Three (3) 2" squares.

### Fabric C

- One (1) Template 1.
- Two (2) template 2 right.
- Two (2) Template 2 Left.
- Two (2) 2" square.

### Fabric D

- One (1) Template 2 right.
- One (1) Template 2 left.
- Two (2) 6" squares.
- Four (4) 5½" squares.
- One (1) 2" square.

### Fabric E

- Four (4) Template 2 right.
- Four (4) Template 2 left.



























