

INCA

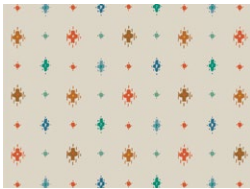
QUILT DESIGNED BY AGFstudio

ANDINA

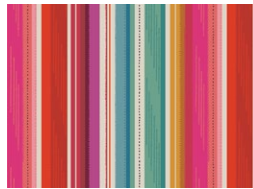
△△△△



FABRICS DESIGNED BY AGF STUDIO



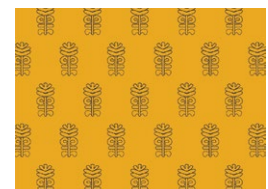
AND-63701
AWASKA EMERALD



AND-63703
VIBRANT FRAZADA



AND-63706
VIVID PALLY



AND-63707
GOLDEN HUACA



AND-63708
INCAN TOOLS CLAY



AND-63709
URUBAMBA FLORA



AND-63710
CRIMSON CHUSI



AND-63715
MACHU PICCHU

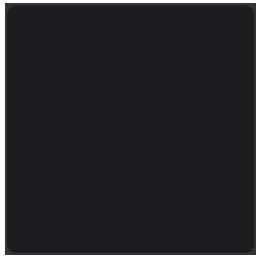


AND-63712
NAZCA LINES



FEEL THE DIFFERENCE © 2021 Courtesy of Art Gallery Quilts LLC. All Rights Reserved.

ADDITIONAL BLENDERS FOR THIS PROJECT



PE-413
CAVIAR

Block 2

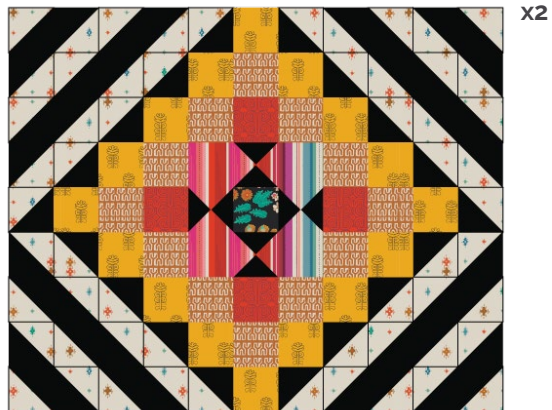


DIAGRAM 16

- Arrange blocks in two rows of two blocks, then sew rows together.
- See diagram below for reference.

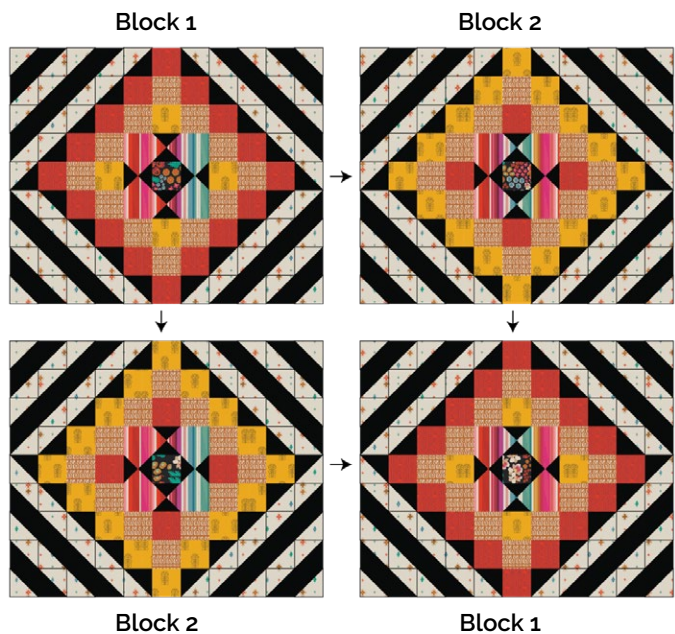


DIAGRAM 17

- Join one (1) 6½" x WOF strip with one (1) 24½" x 6½" strip from fabric **F**.
- Repeat this step one more time.



DIAGRAM 18

- Attach one (1) 66½" x 6½" strip from fabric **F** to the top and the other one to the bottom of the sewn unit.
- See diagram below for reference.

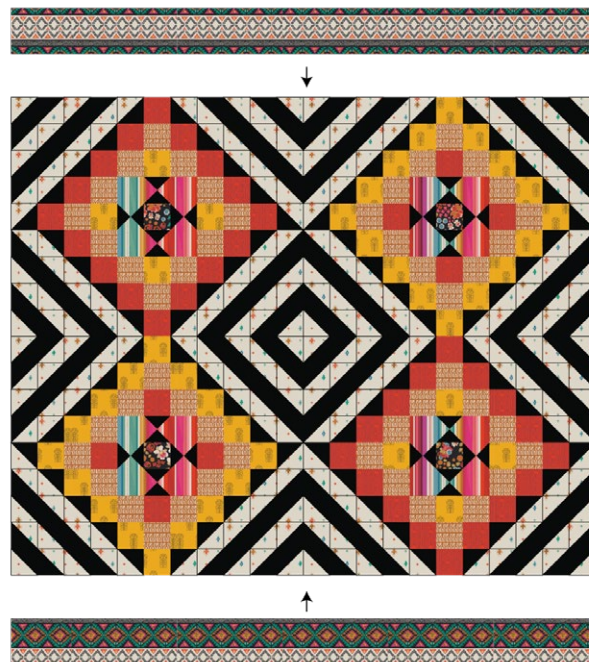


DIAGRAM 19

