

Just Marvelous

X
X
X
X
X
X
X
X
X
X
X
X
X
X
X
X
X



FREE PATTERN

XXXXXXXXXXXXXXXXXXXXXXXXXXXX



Just Marvelous

QUILT DESIGNED BY BARI J.



365 FIFTH AVENUE

FABRICS DESIGNED BY BARI J.

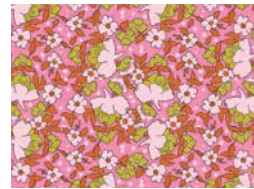
CATSKILL MOUNTAINS



FAV-85840
DRESSING ROOM ROUGE



FAV-85841
BETTY ANN'S GLAMOUR



FAV-85842
CATSKILLS BY THE POOL



FAV-85843
MADISON AVENUE BLAZE



FAV-85845
GREET THE GUESTS BLUSH



FAV-85846
CENTRAL PARK SWEET



FAV-85848
MANHATTAN'S FOLIAGE

UPPER WEST SIDE



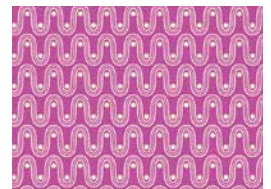
FAV-95841
BETTY ANN'S CHARM



FAV-95842
CATSKILLS BY THE LAKE



FAV-95843
MADISON AVENUE GLOOM



FAV-95844
POWDER YOUR FACE NIGHT



FAV-95845
GREET THE GUESTS VERT



FAV-95848
MANHATTAN'S GLITZ



ADDITIONAL BLENDERS FOR THIS PROJECT



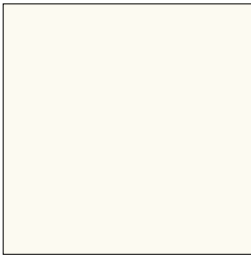
FE-518
BALLERINA



FE-532
HAY



FE-504
SAND



PE-408
WHITE LINEN



FINISHED SIZE | 62.5" x 72.5"

FABRIC REQUIREMENTS

Fabric A	FAV-85840	½ yd.
Fabric B	FAV-85841	⅞ yd.
Fabric C	FAV-85842	½ yd.
Fabric D	FAV-85843	½ yd.
Fabric E	FAV-85845	⅜ yd.
Fabric F	FAV-85846	½ yd.
Fabric G	FAV-85848	½ yd.
Fabric H	FAV-95841	½ yd.
Fabric I	FAV-95842	½ yd.
Fabric J	FAV-95843	½ yd.
Fabric K	FAV-95845	½ yd.
Fabric L	FAV-95848	½ yd.
Fabric M	FE-518	½ yd.
Fabric N	FAV-95844	½ yd.
Fabric O	FE-532	½ yd.
Fabric P	FE-504	½ yd.
Fabric Q	PE-408	3¾ yd.

BACKING FABRIC

FAV-95845 5 yds (Suggested)

BINDING FABRIC

Fabric **B** FAV-85841 (Included)

CUTTING DIRECTIONS

¼" seam allowances are included.
WOF means width of fabric.

- Four (4) WOF x 3" strips from fabrics **A, B, C, D, E, F, G, H, I, J, K, L, M, N, O** and **P**.
- Six (6) templates 2 from fabrics **A, C, G, H, I, K, L, M, N, O**, and **P**.
- Eight (8) templates 2 from fabrics **B, D**, and **F**.
- Fourteen (14) templates 2 from fabric **J**.
- Sixty four (64) WOF x 1" strips from fabric **Q**.
- Eighty four (84) WOF x ¾" strips from fabric **Q**.

Take fifty two (52) WOF x ¾" strips from fabric **Q** and divide them into four equal parts, getting a total of two hundred eight (208) strips that measure approx 10" x ¾".

CONSTRUCTION

Sew all rights sides together with ¼" seam allowance.

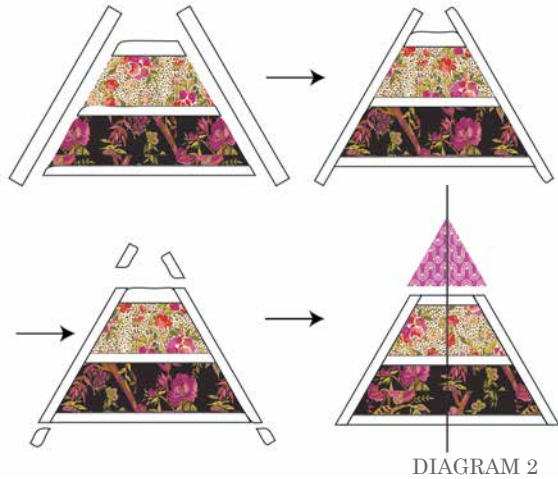
Block 1 (x6):

- Take two (2) WOF x 3" strips from fabrics **G** and **B**, four (4) WOF x 1" strips from fabric **Q**, two (2) WOF x ¾" strips from fabric **Q**, twelve (12) 10" x ¾" strips from fabric **Q**, and six (6) template 2 from fabric **N**.
- Make the following strip set two (2) times:
1" Q - 3" G - 1" Q - 3" B - 3/4" Q.
- Sub-cut four (4) template 1 from each strip set following Diagram 1.
- You will need six (6) template 1 for Block 1.



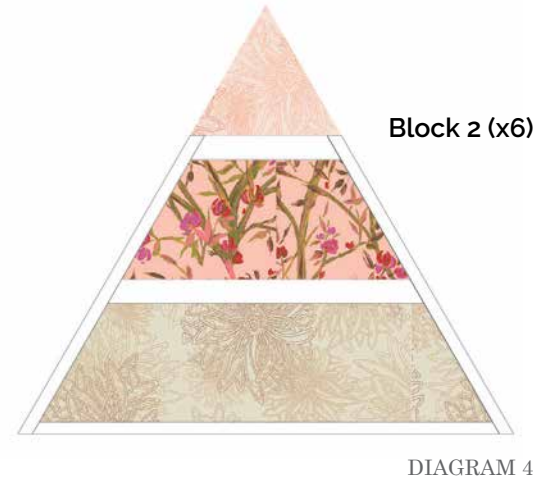
DIAGRAM 1

- Join one (1) strip from fabric **Q** to each side of the block and trim the excess fabric **Q**.
- Align each template 2 from fabric **N** to the top center of each block and join them.



- **Block 2 (x6):**
- Take two (2) WOF x 3" strips from fabrics **F** and **P**, four (4) WOF x 1" strips from fabric **Q**, two (2) WOF x ¾" strips from fabric **Q**, twelve (12) 10" x ¾" strips from fabric **Q**, and six (6) template 2 from fabric **M**.
- Make the following strip set two (2) times:
 - 1" **Q** - 3" **F** - 1" **Q** - 3" **P** - ¾" **Q**.

- Sub-cut six (6) template 1 from the strip sets following Diagram 1.
- Join one (1) strip from fabric **Q** to each side of the block and trim the excess fabric **Q**.
- Align each template 2 from fabric **M** to the top center of each block and join them following Diagram 2.



- **Block 3 (x8):**
- Take two (2) WOF x 3" strips from fabrics **J** and **C**, four (4) WOF x 1" strips from fabric **Q**, two (2) WOF x ¾" strips from fabric **Q**, sixteen (16) 10" x ¾" strips from fabric **Q**, and eight (8) template 2 from fabric **F**.
- Make the following strip set two (2) times:
 - 1" **Q** - 3" **J** - 1" **Q** - 3" **C** - ¾" **Q**.
- Sub-cut eight (8) template 1 from the strip sets following Diagram 1.
- Join one (1) strip from fabric **Q** to each side of the block and trim the excess fabric **Q**.
- Align each template 2 from fabric **F** to the top center of each block and join them following Diagram 2.

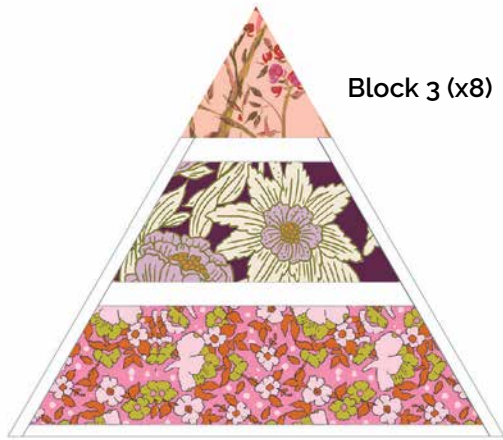


DIAGRAM 5

- **Block 4 (x6):**
- Take two (2) WOF x 3" strips from fabrics **E** and **L**, four (4) WOF x 1" strips from fabric **Q**, two (2) WOF x 3/4" strips from fabric **Q**, twelve (12) 10" x 3/4" strips from fabric **Q**, and six (6) template 2 from fabric **A**.
- Make the following strip set two (2) times:
 - 1" **Q** - 3" **E** - 1" **Q** - 3" **L** - 3/4" **Q**.
- Sub-cut six (6) template 1 from the strip sets following Diagram 1.
- Join one (1) strip from fabric **Q** to each side of the block and trim the excess fabric **Q**.
- Align each template 2 from fabric **A** to the top center of each block and join them following Diagram 2.



DIAGRAM 6

- **Block 5 (x6):**
- Take two (2) WOF x 3" strips from fabrics **I** and **O**, four (4) WOF x 1" strips from fabric **Q**, two (2) WOF x 3/4" strips from fabric **Q**, twelve (12) 10" x 3/4" strips from fabric **Q**, and six (6) template 2 from fabric **K**.
- Make the following strip set two (2) times:
 - 1" **Q** - 3" **I** - 1" **Q** - 3" **O** - 3/4" **Q**.
- Sub-cut six (6) template 1 from the strip sets following Diagram 1.
- Join one (1) strip from fabric **Q** to each side of the block and trim the excess fabric **Q**.
- Align each template 2 from fabric **K** to the top center of each block and join them following Diagram 2.

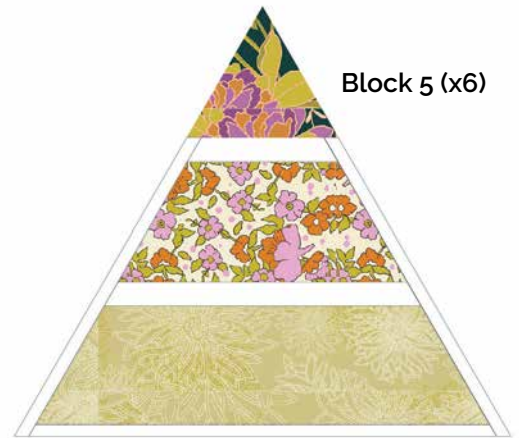


DIAGRAM 7

- **Block 6 (x6):**
- Take two (2) WOF x 3" strips from fabrics **L** and **N**, four (4) WOF x 1" strips from fabric **Q**, two (2) WOF x 3/4" strips from fabric **Q**, twelve (12) 10" x 3/4" strips from fabric **Q**, and six (6) template 2 from fabric **O**.
- Make the following strip set two (2) times:
 - 1" **Q** - 3" **L** - 1" **Q** - 3" **N** - 3/4" **Q**.
- Sub-cut six (6) template 1 from the strip sets following Diagram 1.
- Join one (1) strip from fabric **Q** to each side of the block and trim the excess fabric **Q**.
- Align each template 2 from fabric **O** to the top center of each block and join them following Diagram 2.

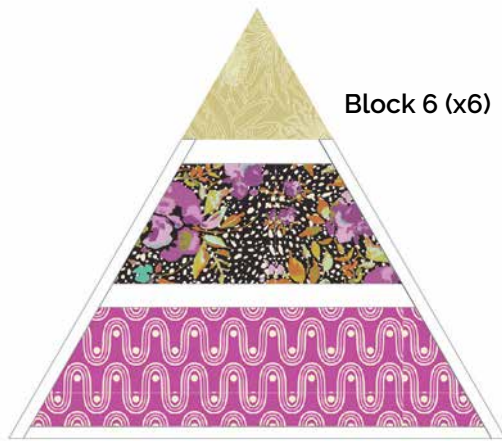


DIAGRAM 8

• **Block 7 (x8):**

- Take two (2) WOF x 3" strips from fabrics **M** and **G**, four (4) WOF x 1" strips from fabric **Q**, two (2) WOF x ¾" strips from fabric **Q**, sixteen (16) 10" x ¾" strips from fabric **Q**, and eight (8) template 2 from fabric **D**.
- Make the following strip set two (2) times:
 - 1" **Q** - 3" **M** - 1" **Q** - 3" **G** - 3/4" **Q**.
- Sub-cut eight (8) template 1 from the strip sets following Diagram 1.
- Join one (1) strip from fabric **Q** to each side of the block and trim the excess fabric **Q**.
- Align each template 2 from fabric **D** to the top center of each block and join them following Diagram 2.

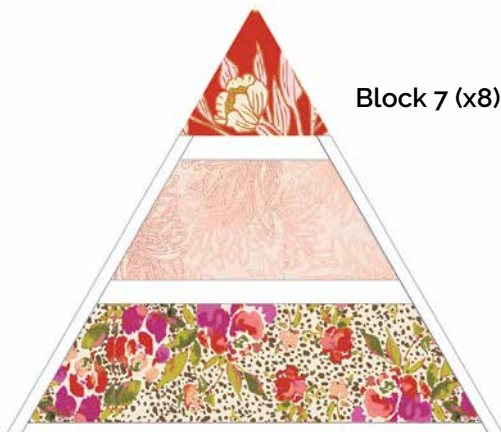


DIAGRAM 9

• **Block 8 (x6):**

- Take two (2) WOF x 3" strips from fabrics **B** and **F**, four (4) WOF x 1" strips from fabric **Q**, two (2) WOF x ¾" strips from fabric **Q**, twelve (12) 10" x ¾" strips from fabric **Q**, and six (6) template 2 from fabric **G**.
- Make the following strip set two (2) times:
 - 1" **Q** - 3" **B** - 1" **Q** - 3" **F** - 3/4" **Q**.
- Sub-cut six (6) template 1 from the strip sets following Diagram 1.
- Join one (1) strip from fabric **Q** to each side of the block and trim the excess fabric **Q**.
- Align each template 2 from fabric **G** to the top center of each block and join them following Diagram 2.

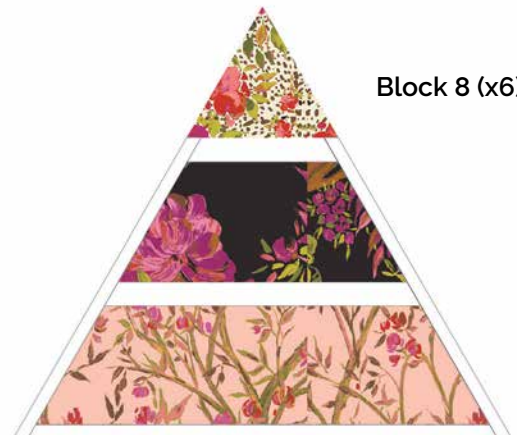


DIAGRAM 10

• **Block 9 (x6):**

- Take two (2) WOF x 3" strips from fabrics **C** and **H**, four (4) WOF x 1" strips from fabric **Q**, two (2) WOF x ¾" strips from fabric **Q**, twelve (12) 10" x ¾" strips from fabric **Q**, and six (6) template 2 from fabric **P**.
- Make the following strip set two (2) times:
 - 1" **Q** - 3" **C** - 1" **Q** - 3" **H** - 3/4" **Q**.
- Sub-cut six (6) template 1 from the strip sets following Diagram 1.
- Join one (1) strip from fabric **Q** to each side of the block and trim the excess fabric **Q**.
- Align each template 2 from fabric **P** to the top center of each block and join them following Diagram 2.



DIAGRAM 11

• **Block 10 (x6):**

• Take two (2) WOF x 3" strips from fabrics **D** and **I**, four (4) WOF x 1" strips from fabric **Q**, two (2) WOF x 3/4" strips from fabric **Q**, twelve (12) 10" x 3/4" strips from fabric **Q**, and six (6) template 2 from fabric **H**.

• Make the following strip set two (2) times:

• 1" **Q** - 3" **D** - 1" **Q** - 3" **I** - 3/4" **Q**.

• Sub-cut six (6) template 1 from the strip sets following Diagram 1.

• Join one (1) strip from fabric **Q** to each side of the block and trim the excess fabric **Q**.

• Align each template 2 from fabric **H** to the top center of each block and join them following Diagram 2.

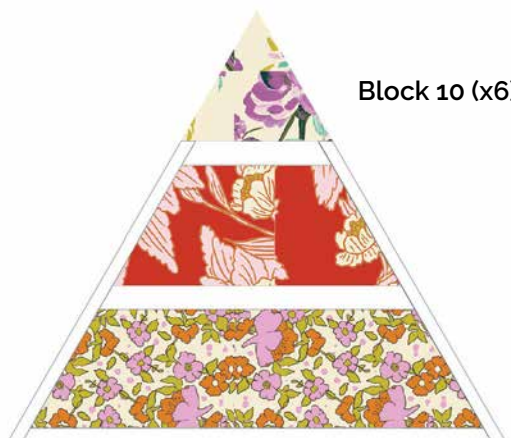


DIAGRAM 12

• **Block 11 (x8):**

• Take two (2) WOF x 3" strips from fabrics **N** and **E**, four (4) WOF x 1" strips from fabric **Q**, two (2) WOF x 3/4" strips from fabric **Q**, sixteen (16) 10" x 3/4" strips from fabric **Q**, and eight (8) template 2 from fabric **B**.

• Make the following strip set two (2) times:

• 1" **Q** - 3" **N** - 1" **Q** - 3" **E** - 3/4" **Q**.

• Sub-cut eight (8) template 1 from the strip sets following Diagram 1.

• Join one (1) strip from fabric **Q** to each side of the block and trim the excess fabric **Q**.

• Align each template 2 from fabric **B** to the top center of each block and join them following Diagram 2.



DIAGRAM 13

• **Block 12 (x6):**

• Take two (2) WOF x 3" strips from fabrics **P** and **K**, four (4) WOF x 1" strips from fabric **Q**, two (2) WOF x 3/4" strips from fabric **Q**, twelve (12) 10" x 3/4" strips from fabric **Q**, and six (6) template 2 from fabric **L**.

• Make the following strip set two (2) times:

• 1" **Q** - 3" **P** - 1" **Q** - 3" **K** - 3/4" **Q**.

• Sub-cut six (6) template 1 from the strip sets following Diagram 1.

• Join one (1) strip from fabric **Q** to each side of the block and trim the excess fabric **Q**.

• Align each template 2 from fabric **L** to the top center of each block and join them following Diagram 2.

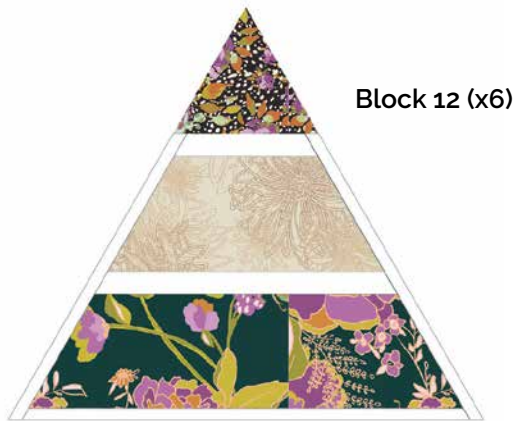


DIAGRAM 14

- **Block 13 (x6):**
- Take two (2) WOF x 3" strips from fabrics **A** and **M**, four (4) WOF x 1" strips from fabric **Q**, two (2) WOF x 3/4" strips from fabric **Q**, twelve (12) 10" x 3/4" strips from fabric **Q**, and six (6) template 2 from fabric **J**.
- Make the following strip set two (2) times:
 - 1" **Q** - 3" **A** - 1" **Q** - 3" **M** - 3/4" **Q**.
- Sub-cut six (6) template 1 from the strip sets following Diagram 1.
- Join one (1) strip from fabric **Q** to each side of the block and trim the excess fabric **Q**.
- Align each template 2 from fabric **J** to the top center of each block and join them following Diagram 2.

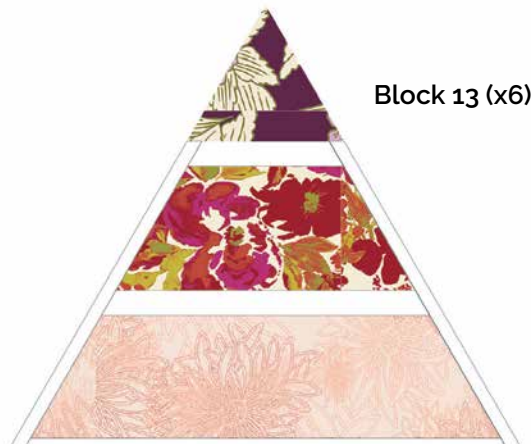


DIAGRAM 15

- **Block 14 (x6):**
- Take two (2) WOF x 3" strips from fabrics **O** and **J**, four (4) WOF x 1" strips from fabric **Q**, two (2) WOF x 3/4" strips from fabric **Q**, twelve (12) 10" x 3/4" strips from fabric **Q**, and six (6) template 2 from fabric **C**.
- Make the following strip set two (2) times:
 - 1" **Q** - 3" **O** - 1" **Q** - 3" **J** - 3/4" **Q**.
- Sub-cut six (6) template 1 from the strip sets following Diagram 1.
- Join one (1) strip from fabric **Q** to each side of the block and trim the excess fabric **Q**.
- Align each template 2 from fabric **C** to the top center of each block and join them following Diagram 2.

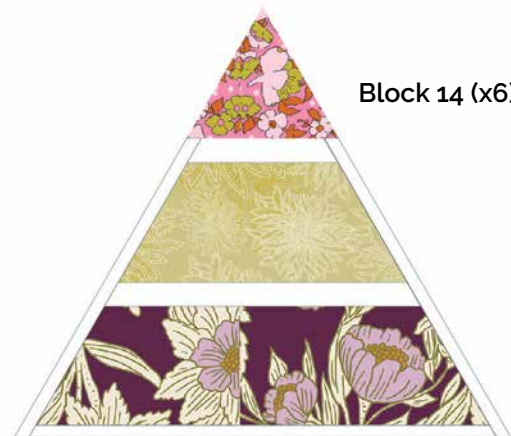


DIAGRAM 16

- **Block 15 (x8):**
- Take two (2) WOF x 3" strips from fabrics **H** and **D**, four (4) WOF x 1" strips from fabric **Q**, two (2) WOF x 3/4" strips from fabric **Q**, sixteen (16) 10" x 3/4" strips from fabric **Q**, and eight (8) template 2 from fabric **J**.
- Make the following strip set two (2) times:
 - 1" **Q** - 3" **H** - 1" **Q** - 3" **D** - 3/4" **Q**.
- Sub-cut eight (8) template 1 from the strip sets following Diagram 1.
- Join one (1) strip from fabric **Q** to each side of the block and trim the excess fabric **Q**.
- Align each template 2 from fabric **J** to the top center of each block and join them following Diagram 2.

QUILT TOP

Sew all rights sides together with 1/4" seam allowance.



DIAGRAM 17

- **Block 16 (x6):**
- Take two (2) WOF x 3" strips from fabrics **K** and **A**, four (4) WOF x 1" strips from fabric **Q**, two (2) WOF x 3/4" strips from fabric **Q**, twelve (12) 10" x 3/4" strips from fabric **Q**, and six (6) template 2 from fabric **I**.
- Make the following strip set two (2) times:
- 1" **Q** - 3" **K** - 1" **Q** - 3" **A** - 3/4" **Q**.
- Sub-cut six (6) template 1 from the strip sets following Diagram 1.
- Join one (1) strip from fabric **Q** to each side of the block and trim the excess fabric **Q**.
- Align each template 2 from fabric **I** to the top center of each block and join them following Diagram 2.



DIAGRAM 18

- Join the blocks into the following rows:
- Row 1:**
- 3 - 3 - 1 - 1 - 1 - 4 - 4 - 4 - 2 - 2 - 2 - 3 - 3
- Row 2:**
- 3 - 3 - 5 - 5 - 5 - 4 - 4 - 4 - 6 - 6 - 6 - 3 - 3
- Row 3:**
- 7 - 7 - 5 - 5 - 5 - 8 - 8 - 8 - 6 - 6 - 6 - 7 - 7
- Row 4:**
- 7 - 7 - 9 - 9 - 9 - 8 - 8 - 8 - 10 - 10 - 10 - 7 - 7
- Row 5:**
- 11 - 11 - 9 - 9 - 9 - 12 - 12 - 12 - 10 - 10 - 10 - 11 - 11
- Row 6:**
- 11 - 11 - 13 - 13 - 13 - 12 - 12 - 12 - 14 - 14 - 14 - 11 - 11
- Row 7:**
- 15 - 15 - 13 - 13 - 13 - 16 - 16 - 16 - 14 - 14 - 14 - 15 - 15
- Row 8:**
- 15 - 15 - 1 - 1 - 1 - 16 - 16 - 16 - 2 - 2 - 2 - 15 - 15
- Trim you quilt top into a rectangle.
- For fabric placement and attachment follow Diagram 19.



DIAGRAM 19

QUILT ASSEMBLY

Sew rights sides together.

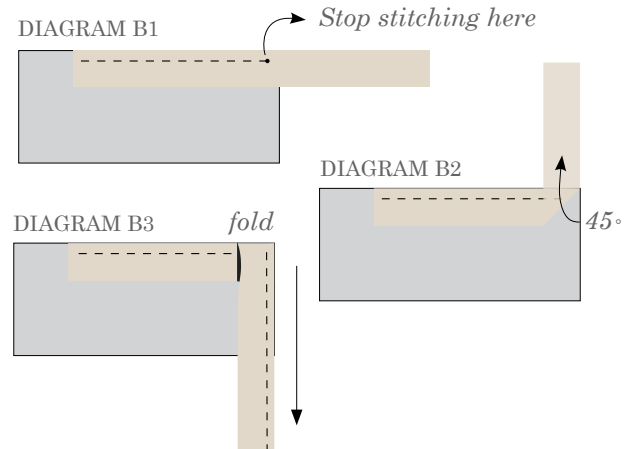
- Place BACKING FABRIC on a large surface wrong side up. Stretch it with masking tape against that surface.
- Place BATTING on top of backing fabric.
- Place TOP on top of the batting with right side facing up. Smooth away wrinkles using your hands.
- Pin all layers together and baste with basting thread, using long stitches. You can also use safety pins to join the layers.
- Machine or hand quilt starting at the center and working towards the corners. Remember that quilting motifs are a matter of personal preference. Have fun choosing yours!
- After you finished, trim excess of any fabric or batting, squaring the quilt to proceed to bind it.

BINDING

Sew rights sides together.

- Cut enough strips $1\frac{1}{2}$ " wide by the width of the fabric **B** to make a final strip 2802" long. Start sewing the binding strip in the middle of one of the sides of the quilt, placing the strip right side down and leaving an approximated 5" tail. Sew with $\frac{1}{4}$ " seam allowance (using straight stitch), aligning the strip's raw edge with the quilt top's raw edge.
- Stop stitching $\frac{1}{4}$ " before the edge of the quilt (DIAGRAM B 1). Clip the threads. Remove the quilt from under the machine presser foot. Fold the strip in a motion of 45° and upward, pressing with your fingers (DIAGRAM B2). Hold this fold with your finger, bring the strip down in line with the next edge, making a horizontal fold that aligns with the top edge of the quilt (DIAGRAM B3). Start sewing at $\frac{1}{4}$ " of the border, stitching all the layers. Do the same in the four corners of the quilt.

- Stop stitching before you reach the last 5 or 6 inches. Cut the threads and remove the quilt from under the machine presser foot. Lay the loose ends of the binding flat along the quilt edge, folding the ends back on themselves where they meet. Press them together to form a crease. Using this crease as the stitching line, sew the two open ends of the binding with right sides together (you can help yourself marking with a pencil if the crease is difficult to see).
- Trim seam to $\frac{1}{4}$ " and press open. Complete the sewing. Turn binding to back of the quilt, turn raw edge inside and stitch by hand using blind stitch.

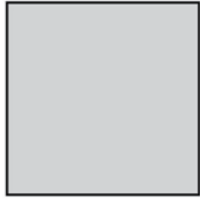


artgalleryfabrics.com

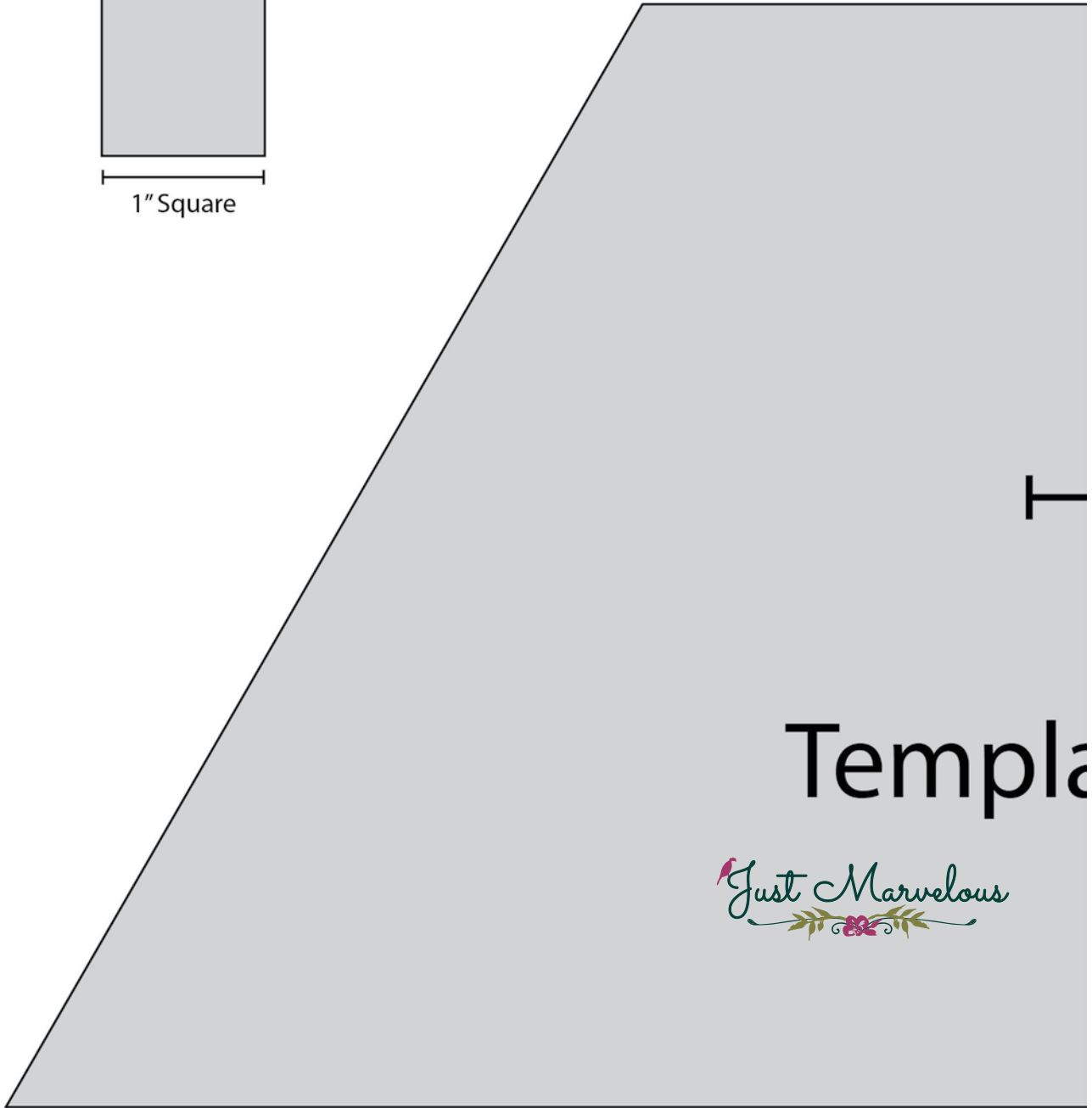
NOTE: While all possible care has been taken to ensure the accuracy of this pattern, We are not responsible for printing errors or the way in which individual work varies.

Please read instructions carefully before starting the construction of this quilt. If desired, wash and iron your fabrics before starting to cut.

Printer Test



1" Square



T

Templa



