

A large, vibrant quilt composed of numerous small squares, each featuring a different pattern. The patterns include stylized fish, trees, mountains, and text such as "RIVER RULES", "Laugh Out Loud", and "Small town's got secrets". The colors are primarily blues, greens, and whites, with accents of red and yellow. The quilt is displayed against a dark background.

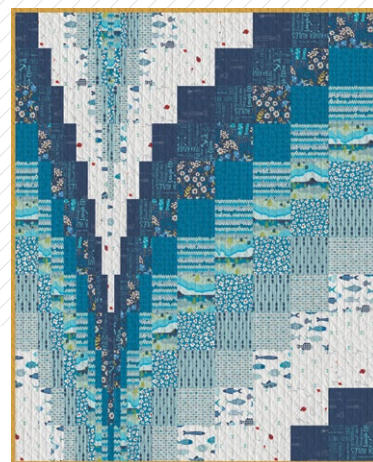
A DIVISION OF AGF

XXXXXXXXXXXXXXXXXXXXXXXXXXXX

MAKING Waves

QUILT DESIGNED BY MATHEW BOURDREAUX

CATCH & RELEASE

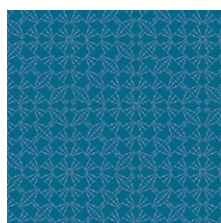


COLOR OPTION

FABRICS DESIGNED BY MATHEW BOURDREAUX



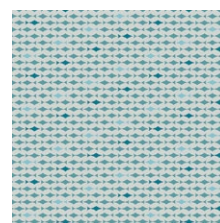
CTR-24900
SCHOOL OF FISH



CTR-24901
CROCHETING THE NET



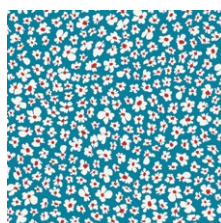
CTR-24902
BLUE BANK FLORA



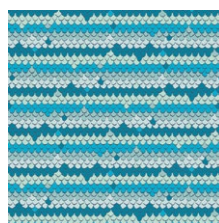
CTR-24903
RIDE THE CURRENT



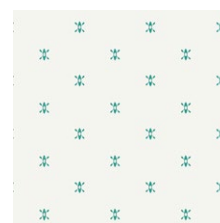
CTR-24904
CATCH & RELEASE



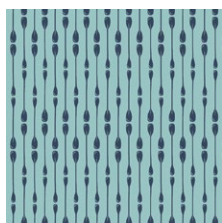
CTR-24905
FLOWER STREAM



CTR-24906
REFLECTORS



CTR-24907
ROWING



CTR-24908
PADDLE ROWS



CTR-24909
GOODLUCK TRAILS



CTR-24910
RIVER RULES



CTR-24911
MOUNTAIN SPACE



FEEL THE DIFFERENCE © 2019 Courtesy of Art Gallery Quilts LLC. All Rights Reserved.

MAKING Waves

FINISHED SIZE | 108" x 87"

FABRIC REQUIREMENTS

Fabric A	CTR-24904	½ yd.
Fabric B	CTR-24909	½ yd.
Fabric C	CTR-24907	½ yd.
Fabric D	CTR-24900	½ yd.
Fabric E	CTR-24903	½ yd.
Fabric F	CTR-24908	½ yd.
Fabric G	CTR-24905	½ yd.
Fabric H	CTR-24911	½ yd.
Fabric I	CTR-24906	½ yd.
Fabric J	CTR-24901	½ yd.
Fabric K	CTR-24902	½ yd.
Fabric L	CTR-24910	½ yd.
Fabric M	PE-421	½ yd.

BACKING FABRIC

CTR-24904 8 ¼ yds. *(Suggested)*

BINDING FABRIC

PE-421 *(Included)*

CUTTING PREPERATIONS

- Two (2) 9" x WOF strip from Fabrics **A, B, C, D, E, F, G, H, I, J, K, L**

CONSTRUCTION

Sew all rights sides together with ¼" seam allowance.

- Pair Fabrics **A** through **L**, following the Diagram below for each order.
- Repeat the same process for the remaining strips.

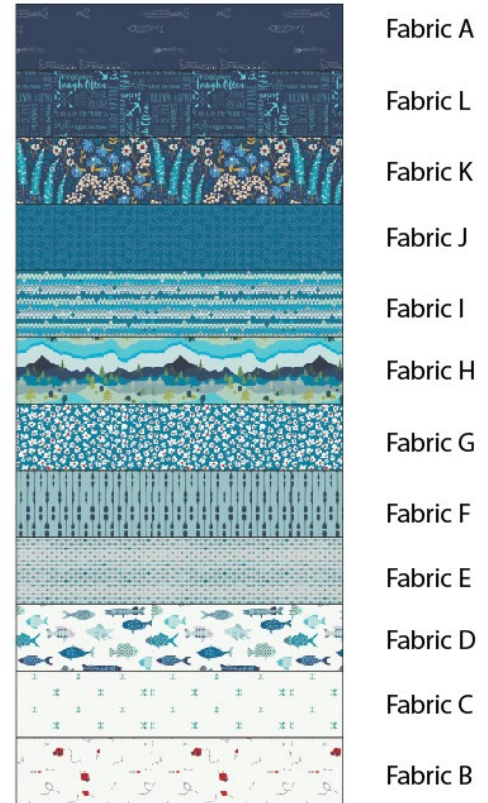


DIAGRAM 1

- Sew the first and last fabrics together creating a continuous loop of fabric.
- Press all your seams open.
- Repeat the same for the other assembled unit.
- Beginning the process for the first fabric tube, flatten it and carefully fold the bottom of the tube onto the top of the tube.
- Pin your fabric before cutting.
- From left to right, start cutting following the measurements below.

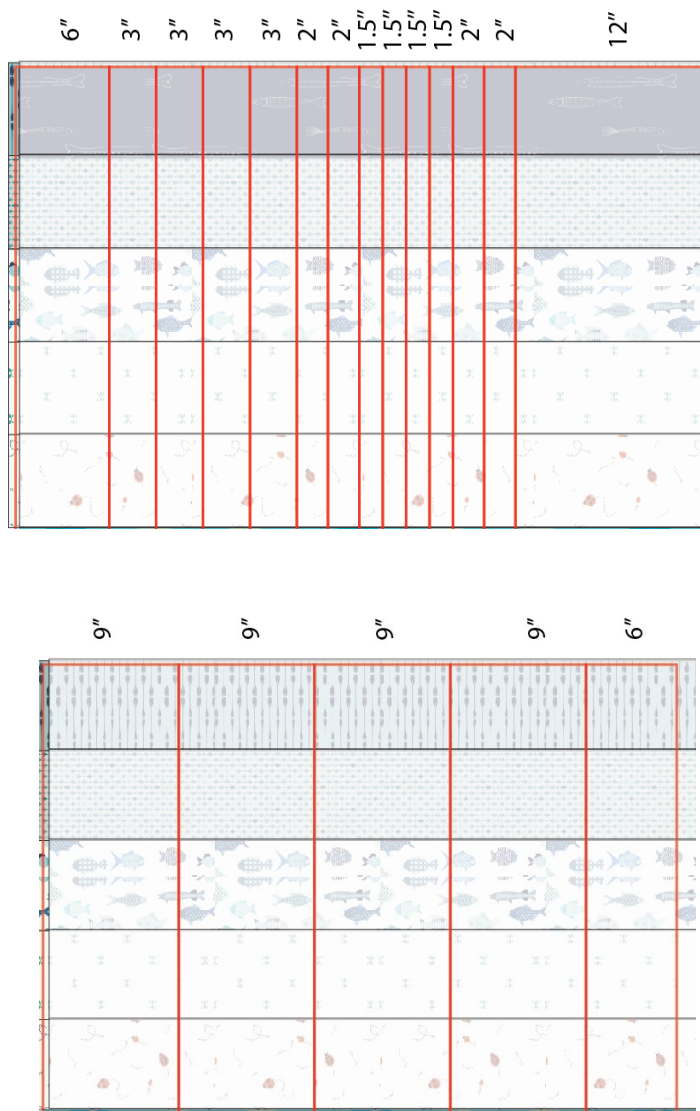


DIAGRAM 2

- Going from left to right, unsew one seam from each tube to create a long strip with the following fabric on top of the strip.
- Then, from left to right, sew each long strip to its adjacent strips making sure to match the seams. (Diagram 3)
- Press seam open.

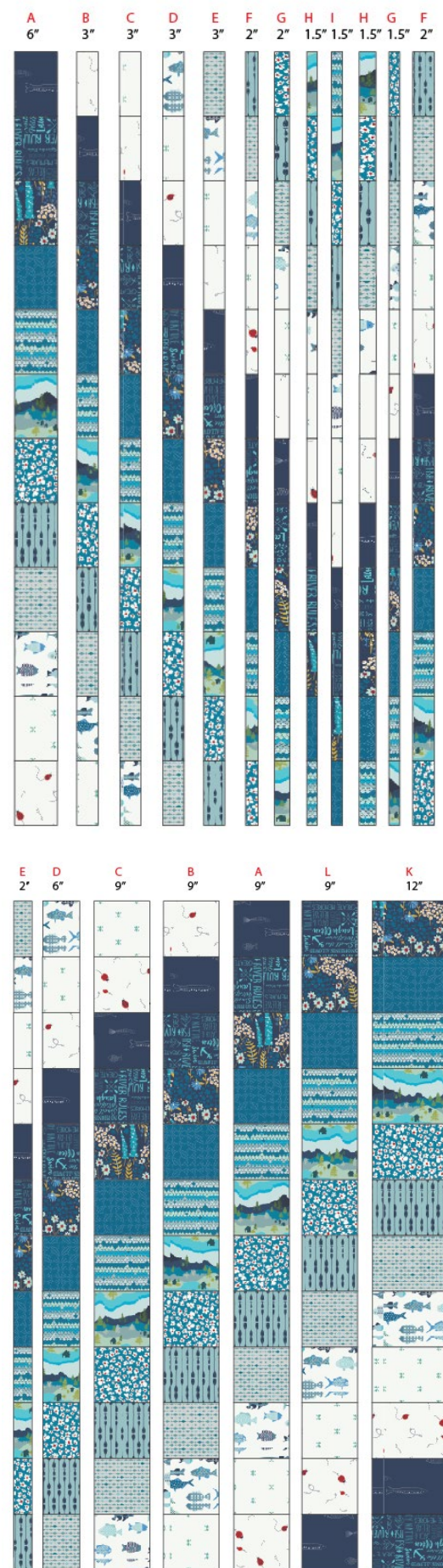


DIAGRAM 3

XXXXXXXXXXXXXXXXXXXXXXXXXXXX

Congratulations
& enjoy

XXXXXXXXXXXXXXXXXXXXXXXXXXXX



artgalleryfabrics.com

NOTE: While all possible care has been taken to ensure the accuracy of this pattern, We are not responsible for printing errors or the way in which individual work varies. Please read instructions carefully before starting the construction of this quilt. If desired, wash and iron your fabrics before starting to cut.

© 2019 Courtesy of Art Gallery Quilts LLC. All Rights Reserved.