

maneuver

FINISHED SIZE | 70" x 77"

FABRIC REQUIREMENTS

Fabric A	DUV60301	$\frac{7}{8}$ yd.
Fabric B	DUV60202	$\frac{7}{8}$ yd.
Fabric C	PES917	1 $\frac{5}{8}$ yd.
Fabric D	DUV60201	$\frac{5}{8}$ yd.
Fabric E	DUV60105	$\frac{1}{2}$ yd.
Fabric F	DUV60302	$\frac{1}{2}$ yd.
Fabric G	PES905	$\frac{5}{8}$ yd.
Fabric H	PES901	$\frac{1}{2}$ yd.
Fabric I	PES911	$\frac{1}{2}$ yd.
Fabric J	PES908	$\frac{1}{4}$ yd.
Fabric K	DUV60205	1 $\frac{1}{2}$ yd.
Fabric L	DUV60306	$\frac{3}{4}$ yd.
Backing	WIDEDUV60205a	2 $\frac{1}{2}$ yd.

BACKING FABRIC

WIDEDUV60205a 2 $\frac{1}{2}$ yds (Wideback Included)

BINDING FABRIC

Fabric **L** DUV60306 (Included)

CUTTING DIRECTIONS

$\frac{1}{4}$ " seam allowances are included.

WOF means width of the fabric.

- One (1) template 1a from fabric **A** (follow diagram 1 for **directional fabric**).
- One (1) template 1b from fabric **A** (follow diagram 1 for **directional fabric**).
- Seven (7) template 2a from fabric **A** (follow diagram 1 for **directional fabric**).
- Eight (8) template 2b from fabric **A** (follow diagram 1 for **directional fabric**).
- Two (2) template 1a from fabric **B**.
- Two (2) template 1b from fabric **B**.
- Seven (7) template 2a from fabric **B**.
- Six (6) template 2b from fabric **B**.
- Seventeen (17) template 1a from fabric **C**.
- Eighteen (18) template 1b from fabric **C**.
- Three (3) template 2a from fabric **C**.
- One (1) template 2b from fabric **C**.
- Two (2) 7 $\frac{1}{2}$ " squares from fabric **C**.
- Six (6) 14 $\frac{1}{2}$ " x 7 $\frac{1}{2}$ " rectangles from fabric **C**.
- One (1) template 1a from fabric **D** (follow diagram 2 for **directional fabric**).
- One (1) template 1b from fabric **D** (follow diagram 2 for **directional fabric**).
- Five (5) template 2a from fabric **D** (follow diagram 2 for **directional fabric**).
- Four (4) template 2b from fabric **D** (follow diagram 2 for **directional fabric**).
- Three (3) template 2a from fabric **E**.
- Three (3) template 2b from fabric **E**.
- One (1) template 1a from fabric **F** (follow diagram 3 for **directional fabric**).
- One (1) template 1b from fabric **F** (follow diagram 3 for **directional fabric**).
- Four (4) template 2a from fabric **F** (follow diagram 3 for **directional fabric**).
- Four (4) template 2b from fabric **F** (follow diagram 3 for **directional fabric**).

- One (1) template 1a from fabric **G**.
- Two (2) template 1b from fabric **G**.
- Four (4) template 2a from fabric **G**.
- Four (4) template 2b from fabric **G**.
- Three (3) template 2a from fabric **H**.
- Six (6) template 2b from fabric **H**.
- One (1) template 1a from fabric **I**.
- One (1) template 1b from fabric **I**.
- Four (4) template 2a from fabric **I**.
- Three (3) template 2b from fabric **I**.
- Two (2) template 2a from fabric **J**.
- One (1) template 2b from fabric **J**.
- Nineteen (19) template 1a from fabric **K**.
- Fifteen (15) template 1b from fabric **K**.
- One (1) template 2a from fabric **K**.
- One (1) Template 2b from fabric **K**.
- Six (6) 14½" x 7½" rectangles from fabric **K**.
- Eight (8) 2½" x WOF strips from fabric **L** (binding).

Fabric A Cutting Diagram.

- Rotate your templates to cut your pieces according to diagram 1.

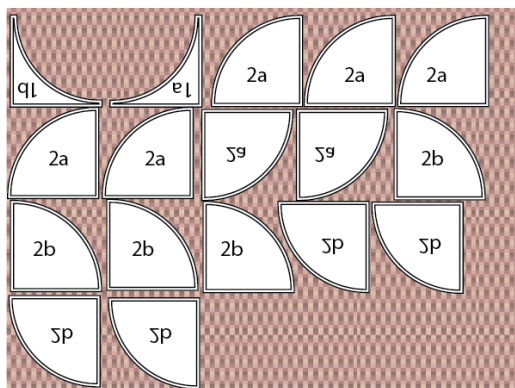


DIAGRAM 1

Fabric D Cutting Diagram.

- Rotate your templates to cut your pieces according to diagram 2.

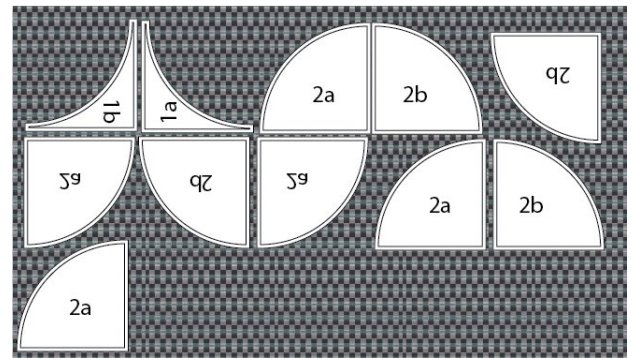


DIAGRAM 2

Fabric F Cutting Diagram.

- Rotate your templates to cut your pieces according to diagram 3.

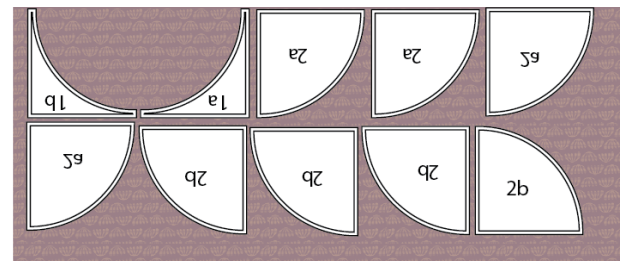


DIAGRAM 3

Non Directional Fabrics.

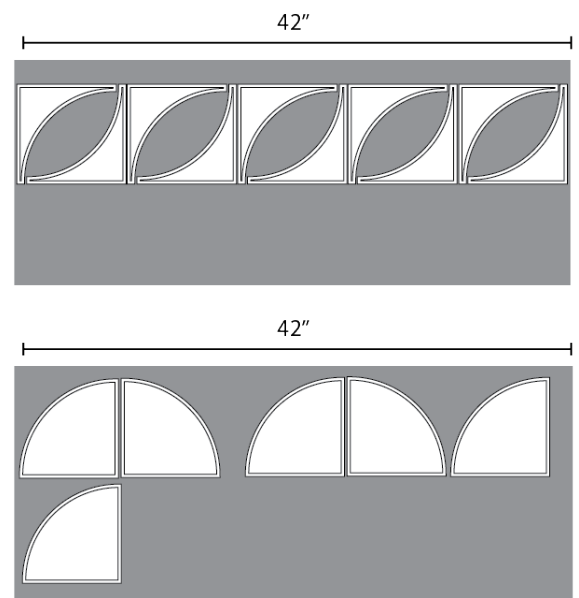
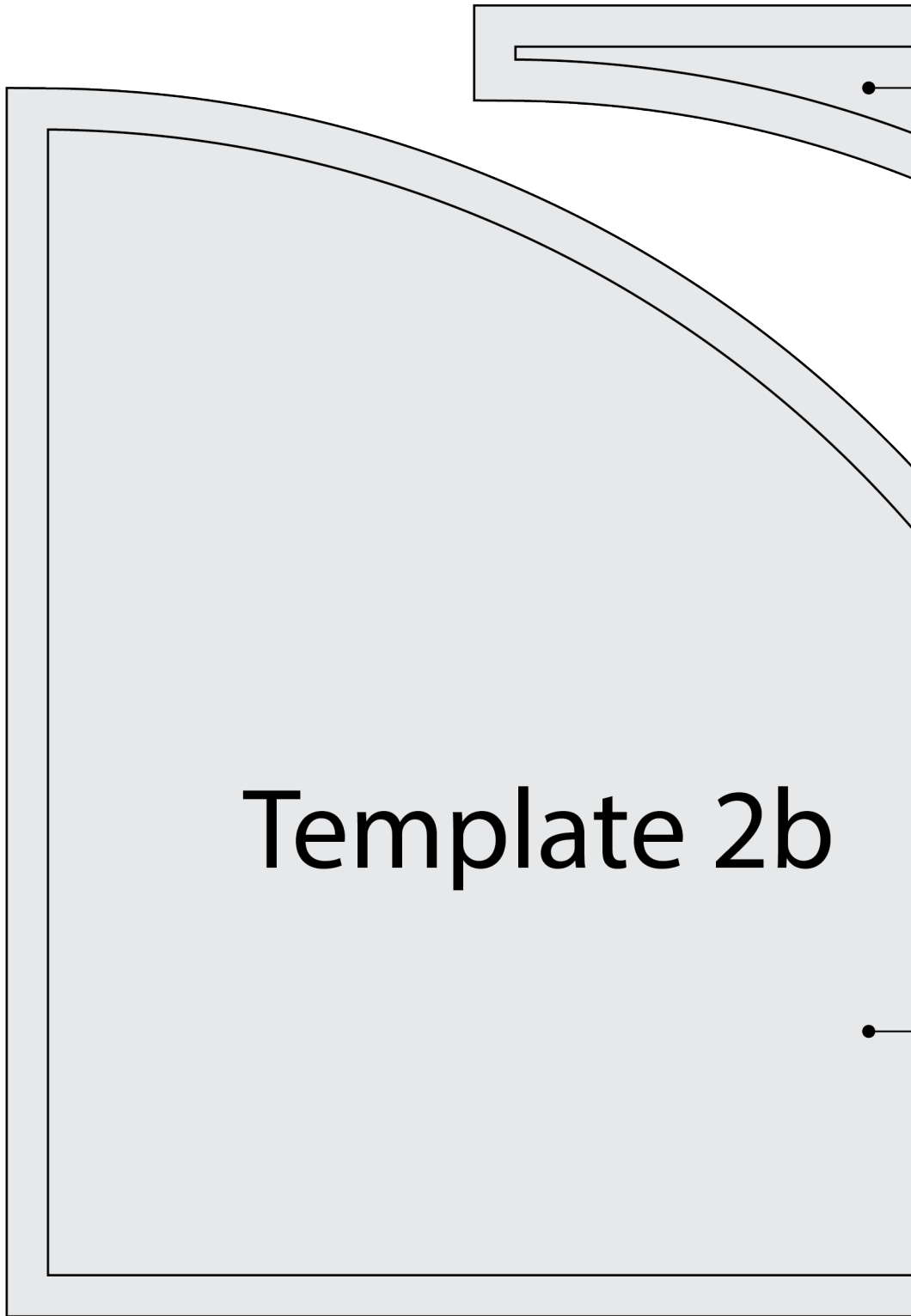


DIAGRAM 4



Template 2b

