

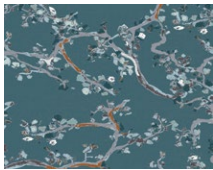
Momentum



QUILT DESIGNED BY *AGFstudio*



FABRICS DESIGNED BY KATARINA ROCCELLA



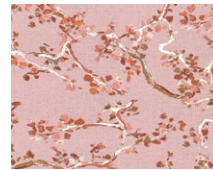
TWT-20216
ENCHANTED LEAVES
FOREST



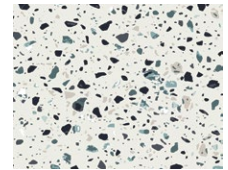
TWT-20201
KUMBU FIBERS



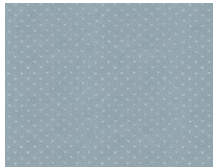
TWT-20208
BUTTONBALLS RUSTIC



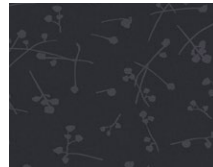
TWT-20203
ENCHANTED LEAVES
POWDER



TWT-20211
TERRAZZO APATITE



TWT-20212
CARVED NOTCHES STEEL



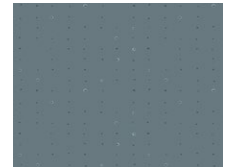
TWT-20219
BUTTONBALLS SOMBER



TWT-20214
AMULET STONEWARE



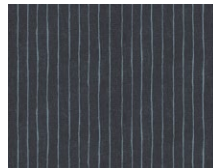
TWT-20217
DOTTED IMPRESSION



TWT-20215
GRIDDED SEEDS MINERAL



TWT-20213
GINKGO GUST SUNRISE



TWT-20218
TORN EDGES



Momentum

FINISHED SIZE | 80" x 80"

FABRIC REQUIREMENTS

Fabric A	TWT-20216	1 yd.
Fabric B	TWT-20201	3 ⁷ / ₈ yd.
Fabric C	TWT-20208	5 ⁸ / ₈ yd.
Fabric D	PE-507	1 ² / ₂ yd.
Fabric E	TWT-20203	1 ² / ₂ yd.
Fabric F	TWT-20211	5 ⁸ / ₈ yd.
Fabric G	TWT-20212	1 ² / ₂ yd.
Fabric H	TWT-20219	3 ⁸ / ₈ yd.
Fabric I	TWT-20214	F8.
Fabric J	TWT-20217	3 ⁸ / ₈ yd.
Fabric K	PE-413	3 ⁸ / ₈ yd.
Fabric L	TWT-20215	F8.
Fabric M	PE-472	3 ⁸ / ₈ yd.
Fabric N	TWT-20213	3 ⁸ / ₈ yd.
Fabric O	TWT-20218	1 yd.

BACKING FABRIC

PE-472 7 1²/₂ yds (*Suggested*)

BINDING FABRIC

Fabric **O** TWT-20218 (*Included*)

CUTTING DIRECTIONS

1/4" seam allowances are included.
WOF means width of fabric.

- Two (2) 16⁷/₈" squares from fabric **A**.
- Eight (8) 4¹/₂" squares from fabric **A**.
- Two (2) 10" squares from fabric **A**.
- Two (2) 16⁷/₈" squares from fabric **A**.
- Two (2) 16⁷/₈" squares from fabric **B**.
- Nine (9) 10" squares from fabric **B**.
- Four (4) 28¹/₂" x 4¹/₂" rectangles from fabric **B**.
- Four (4) 24¹/₂" x 4¹/₂" rectangles from fabric **B**.
- Eight (8) 12¹/₂" x 4¹/₂" rectangles from fabric **B**.
- Sixteen (16) 8¹/₂" x 4¹/₂" rectangles from fabric **B**.
- Forty eight (48) 4¹/₂" squares from fabric **B**.
- Three (3) 10" squares from fabric **C**.
- Twelve (12) 4¹/₂" squares from fabric **C**.
- Four (4) 10" squares from fabric **D**.
- One (1) 10" square from fabric **E**.
- Four (4) 8¹/₂" x 4¹/₂" rectangles from fabric **E**.
- Eight (8) 4¹/₂" squares from fabric **E**.
- Twelve (12) 8¹/₂" x 4¹/₂" rectangles from fabric **F**.
- Eight (8) 4¹/₂" squares from fabric **F**.
- Two (2) 10" squares from fabric **G**.
- Two (2) 4⁷/₈" squares from fabric **G**.
- Twelve (12) 4¹/₂" squares from fabric **G**.
- Two (2) 10" square from fabric **H**.
- One (1) 10" squares from fabric **I**.
- Eight (8) 4¹/₂" squares from fabric **J**.
- Four (4) 8¹/₂" x 4¹/₂" rectangles from fabric **J**.
- Two (2) 10" squares from fabric **K**.
- One (1) 10" square from fabric **L**.
- Eight (8) 4¹/₂" squares from fabric **M**.
- Four (4) 8¹/₂" x 4¹/₂" rectangles from fabric **M**.

- One (1) 10" square from fabric **N**.
- Four (4) 4½" squares from fabric **N**.
- Two (2) 4⅞" squares from fabric **O**.
- Twelve (12) 4½" squares from fabric **O**.
- Four (4) 8½" x 4½" rectangles from fabric **O**.
- Eight (8) 1½" x WOF strips from fabric **O** (binding).

CONSTRUCTION

Sew all rights sides together with ¼" seam allowance.

Magic 8 technique:

- Place one (1) 10" square from fabrics **A** and **B** right sides facing together.
- Draw a line diagonally corner to corner using a mechanical pencil or frixion pen.



DIAGRAM 1

- Stitch at ¼" from each side of the drawn lines.

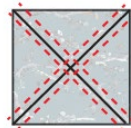


DIAGRAM 2

- You will cut a horizontal line, vertical line, and on both diagonal lines. following the diagram below.

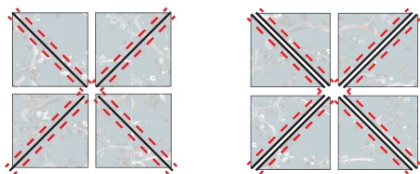


DIAGRAM 3

- Trim each HST to 4½" square. You will have a total of eight (8) HST.

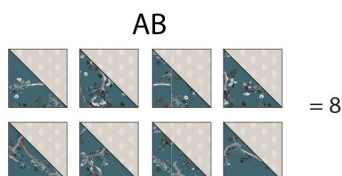


DIAGRAM 4

- Repeat the same Magic 8 instructions for the following 10" squares of the following fabric combinations:

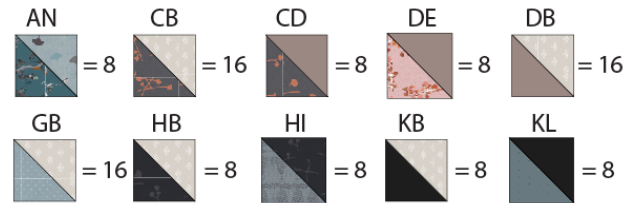
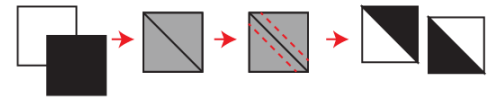


DIAGRAM 5

Half Square Triangle (HST) Construction:

- Take two (2) 4⅞" fabric squares .
- Draw a line diagonally corner to corner using a mechanical pencil or frixion pen.
- Stitch at ¼" from each side of the drawn lines.
- Cut the pieces apart along the marked diagonal line.
- Press and trim to a 4½" perfect square.



- Take one (1) 4⅞" square from fabrics **G** and **O** and follow the half square triangle construction creating two (2) **GO** hst's following the diagram below.

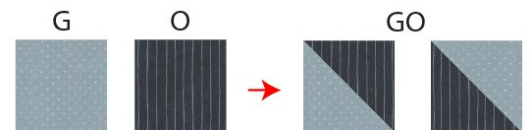


DIAGRAM 6

- Then, take one (1) 4⅞" square from fabrics **G** and **O** and cut on the opposite direction creating two (2) **GO** hst's following the diagram below.

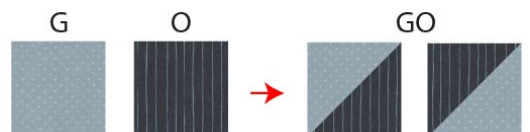


DIAGRAM 7

- Join two (2) $16\frac{7}{8}$ " squares from fabric **A** and **B**.

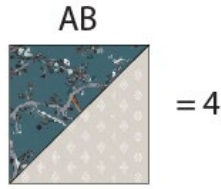


DIAGRAM 8

Flying Geese Construction:

- Take one (1) $8\frac{1}{2}$ " x $4\frac{1}{2}$ " rectangle and two (2) $4\frac{1}{2}$ " squares.
- Place one (1) $4\frac{1}{2}$ " square on top of the $8\frac{1}{2}$ " x $4\frac{1}{2}$ " rectangle.
- Align it to the left side of the rectangle, right sides facing together and draw a diagonal line on top of the square following the diagram below.



DIAGRAM 9

- Stitch on the drawn line.
- Trim excess fabric leaving $\frac{1}{4}$ " seam allowance and press open.



DIAGRAM 10

- Take one (1) $4\frac{1}{2}$ " square and align it on the right side of the fabric $8\frac{1}{2}$ " x $4\frac{1}{2}$ " rectangle, right sides facing together.
- Draw a diagonal line on top of the square.
- Stitch on the drawn line and then press open.



DIAGRAM 11

- Follow the diagram below for each flying geese fabric combination.

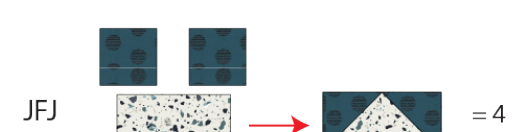
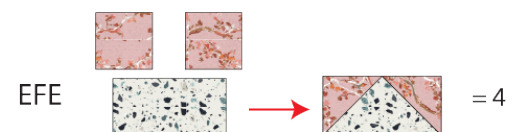
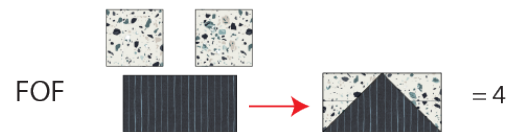
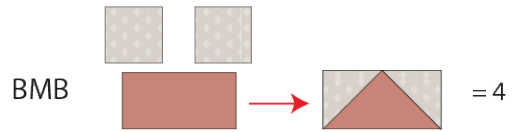
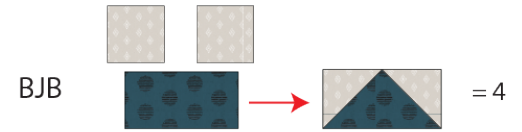
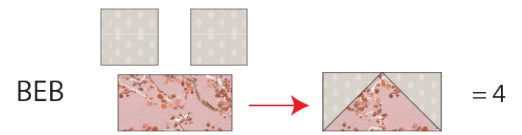


DIAGRAM 12

