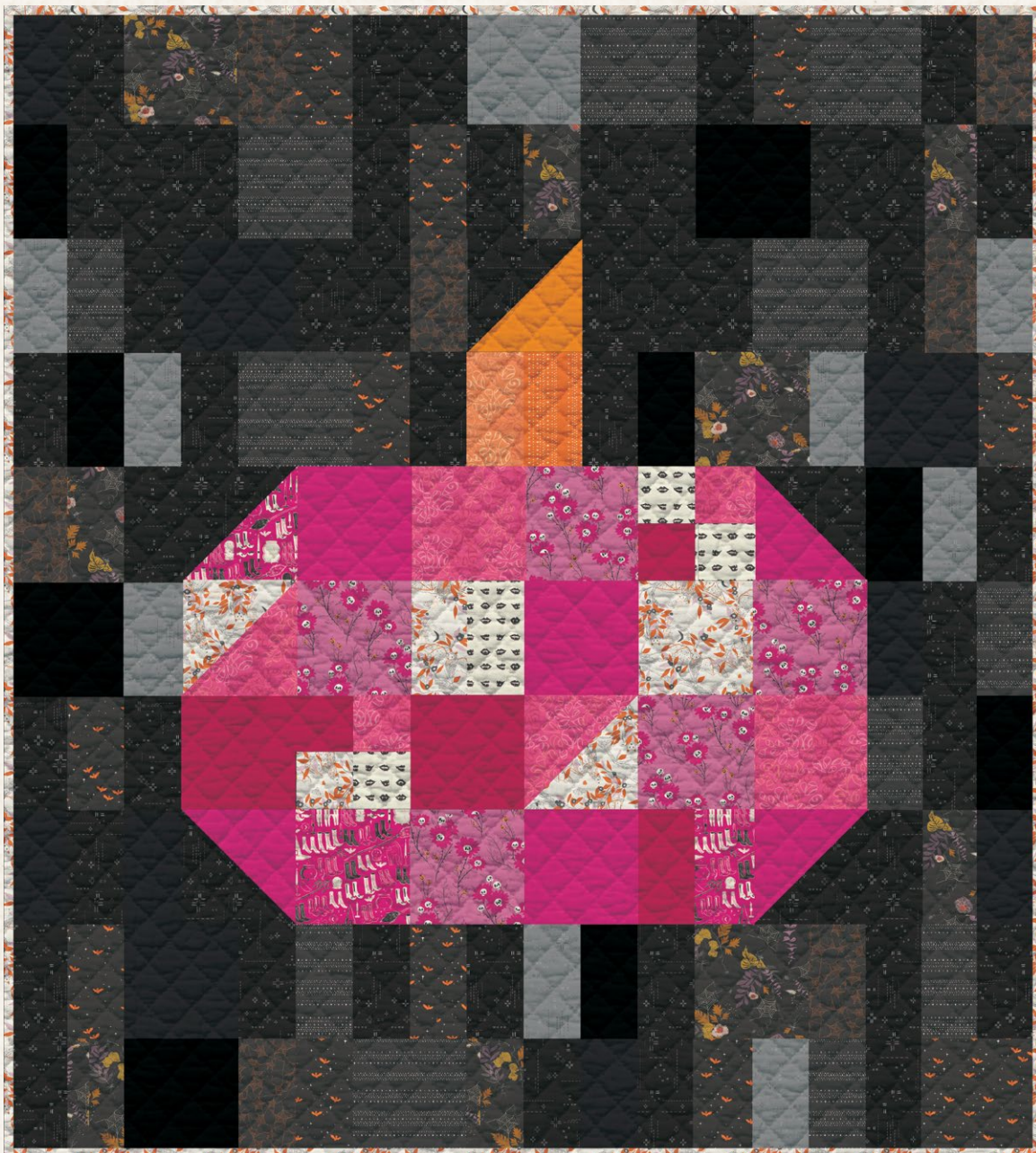
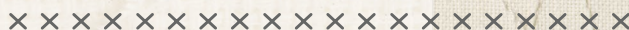




Spookier Charm

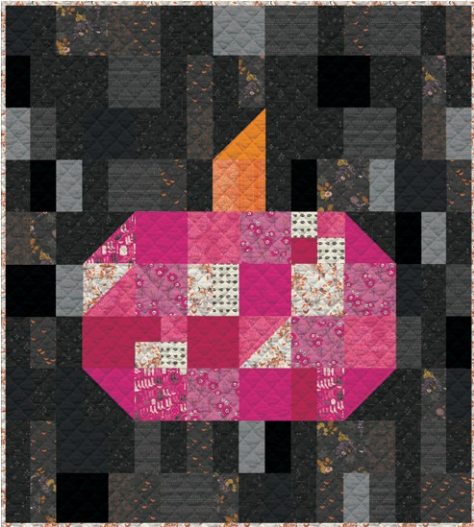


FREE PATTERN



Spookier Charm

QUILT DESIGNED BY AGFstudio

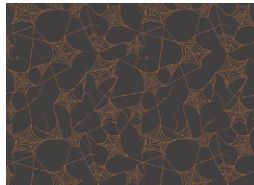


Sweet 'n Spookier

FABRICS DESIGNED BY AGF STUDIO



SNS13003
CAST A SPELL



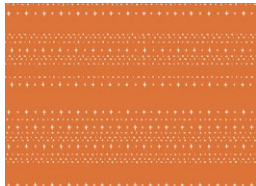
SNS13030
WEB OF SCARES CARAMEL



SNS13032
WINGING IT MIDNIGHT



SNS13036
STARS ALIGNED SPOOKY



SNS13001
STARS ALIGNED TRICK



SNS13037
WITCH'S WARDROBE BERRY



SNS13031
WICKED BLOOMS



SNS13040
FANGTASTIC LIPS



SNS13033
BATTY HANGOUT



ADDITIONAL BLENDERS FOR THIS PROJECT



PE413
CAVIAR



PE499
DEEP BLACK



PE520
SWEET TANGERINE



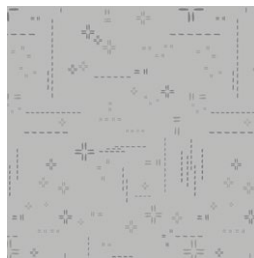
PE439
RASPBERRY ROSE



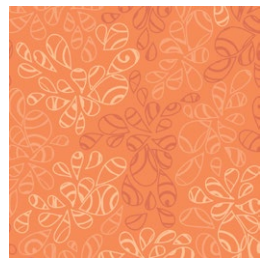
PE511
DRAGON FRUIT



DSE709
STELLAR



DSE702
REFLECTION



NE106
ORANGE PEEL



NE111
HOT PINK

Spookier Charm



FINISHED SIZE | 63" x 70"

FABRIC REQUIREMENTS

| | | |
|-----------------|----------|--------|
| Fabric A | PE413 | ½ yd. |
| Fabric B | DSE709 | 1½ yd. |
| Fabric C | SNS13003 | ½ yd. |
| Fabric D | SNS13030 | ¾ yd. |
| Fabric E | SNS13032 | ½ yd. |
| Fabric F | DSE702 | ¾ yd. |
| Fabric G | SNS13036 | ½ yd. |
| Fabric H | PE499 | ½ yd. |
| Fabric I | PE520 | F8. |
| Fabric J | NE106 | F8. |
| Fabric K | SNS13001 | F8. |
| Fabric L | SNS13037 | FQ. |
| Fabric M | PE439 | ¾ yd. |
| Fabric N | NE111 | ¾ yd. |
| Fabric O | SNS13031 | ¾ yd. |
| Fabric P | PE511 | FQ. |
| Fabric Q | SNS13040 | F8. |
| Fabric R | SNS13033 | ⅝ yd. |

BACKING FABRIC

SNS13030 5 yds (*Suggested*)

BINDING FABRIC

Fabric **R** SNS13033 (*Included*)

CUTTING DIRECTIONS

¼" seam allowances are included.
WOF means width of the fabric.

- Six (6) 7½" x 4" rectangles from fabric **A**.
- Three (3) 7½" squares from fabric **A**.
- Thirty three (33) 7½" x 4" rectangles from fabric **B**.
- Six (6) 7½" squares from fabric **B**.
- Four (4) 7⅞" squares from fabric **B**.
- Six (6) 7½" x 4" rectangles from fabric **C**.
- Three (3) 7½" squares from fabric **C**.
- Seven (7) 7½" x 4" rectangles from fabric **D**.
- Ten (10) 7½" x 4" rectangles from fabric **E**.
- One (1) 7½" square from fabric **E**.
- One (1) 7½" square from fabric **F**.
- Eight (8) 7½" x 4" rectangles from fabric **F**.
- Six (6) 7½" x 4" rectangles from fabric **G**.
- Six (6) 7½" squares from fabric **G**.
- Six (6) 7½" x 4" rectangles from fabric **H**.
- Three (3) 7½" squares from fabric **H**.
- One (1) 7⅞" square from fabric **I**.
- One (1) 7½" x 4" rectangle from fabric **J**.
- One (1) 7½" x 4" rectangle from fabric **K**.
- One (1) 7½" square from fabric **L**.
- One (1) 7⅞" square from fabric **L**.
- One (1) 7½" x 4" rectangle from fabric **L**.
- Three (3) 7½" squares from fabrics **M**.
- Two (2) 7⅞" squares from fabric **M**.
- One (1) 7⅞" square from fabric **N**.
- Two (2) 7½" squares from fabric **N**.
- Two (2) 4" squares from fabric **N**.
- Five (5) 7½" squares from fabric **O**.
- One (1) 7½" x 4" rectangle from fabric **P**.
- Two (2) 7½" squares from fabric **P**.

- Two (2) 4" squares from fabrics **P**.
- One (1) 7½" x 4" rectangle from fabric **Q**.
- Three (3) 4" squares from fabric **Q**.
- One (1) 7½" x 4" rectangle from fabric **R**.
- One (1) 4" square from fabric **R**.
- One (1) 7½" square from fabric **R**.
- One (1) 7⅞" square from fabric **R**.

CONSTRUCTION

Sew all rights sides together with ¼" seam allowance.

HST construction

- Place one (1) 7⅞" square from fabric **N** and **R** right sides together.
- Mark a diagonal line on the wrong side of one of the fabric square.
- Sew ¼" on each side of the marked line.
- Using a rotary cutter cut the square through the marked line.
- Trim each HST to a 7½" square.
- You will end up with two (2) **N-R** HST.



DIAGRAM 1

- Follow the HST construction to create the following blocks.
- Set aside the leftover fabrics.

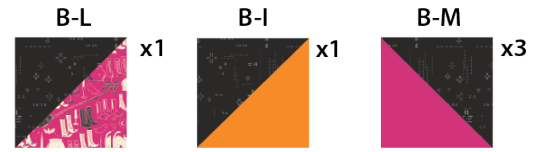


DIAGRAM 2

Block 1

- Pair two (2) 4" squares from fabric **Q**, one (1) 4" square from fabrics **N** and **P** as shown on diagram below.

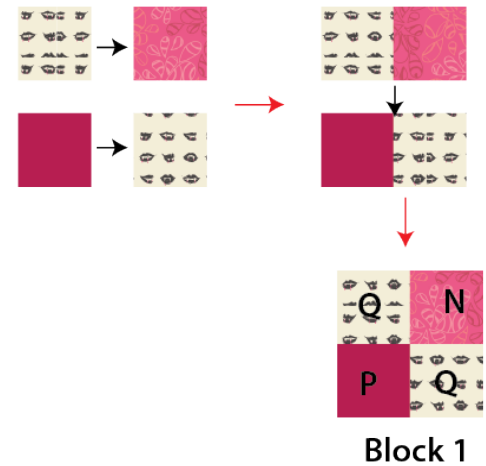


DIAGRAM 3

Block 2

- Repeat the same block construction for Block 2 with one (1) 4" square from fabrics **N**, **P**, **Q**, **R**.

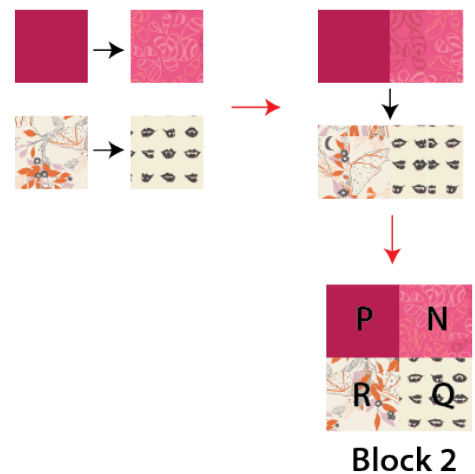


DIAGRAM 4

QUILT TOP

• Arrange the all pieces into ten (10) rows. See diagram below for fabric placement and attachment.



DIAGRAM 5

- Sew all rows together.

Row 1



Row 2



Row 3



Row 4



Row 5



Row 6



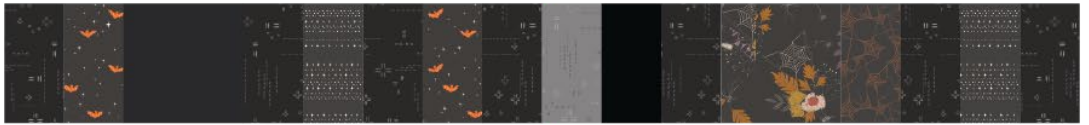
Row 7



Row 8



Row 9



Row 10



DIAGRAM 6

- Quilt as desired.

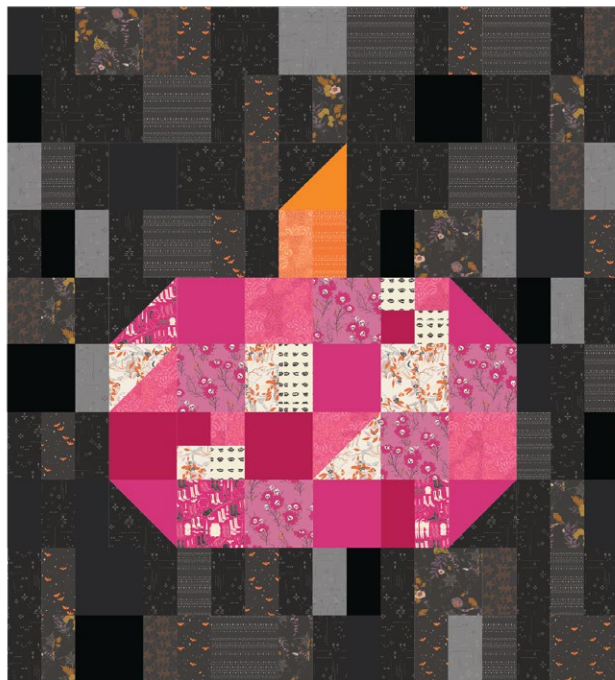


DIAGRAM 7

QUILT ASSEMBLY

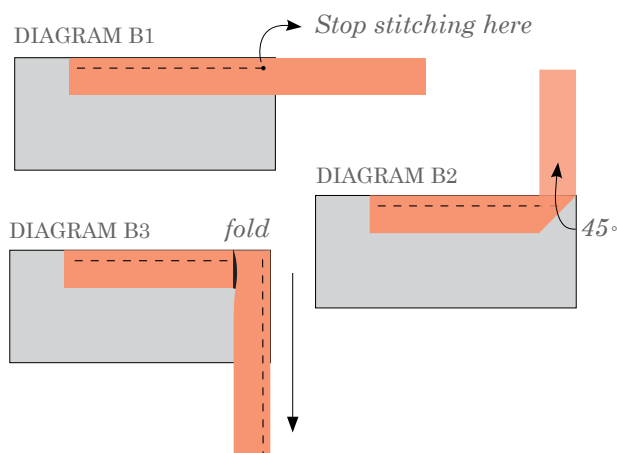
Sew rights sides together.

- Place BACKING FABRIC on a large surface wrong side up. Stretch it with masking tape against that surface.
- Place BATTING on top of backing fabric.
- Place TOP on top of the batting with right side facing up. Smooth away wrinkles using your hands.
- Pin all layers together and baste with basting thread, using long stitches. You can also use safety pins to join the layers.
- Machine or hand quilt starting at the center and working towards the corners. Remember that quilting motifs are a matter of personal preference. Have fun choosing yours!
- After you finished, trim excess of any fabric or batting, squaring the quilt to proceed to bind it.

BINDING

Sew rights sides together.

- Cut enough strips $1\frac{1}{2}$ " wide by the width of the fabric **R** to make a final strip 276" long. Start sewing the binding strip in the middle of one of the sides of the quilt, placing the strip right side down and leaving an approximated 5" tail. Sew with $\frac{1}{4}$ " seam allowance (using straight stitch), aligning the strip's raw edge with the quilt top's raw edge.
- Stop stitching $\frac{1}{4}$ " before the edge of the quilt (DIAGRAM B 1). Clip the threads. Remove the quilt from under the machine presser foot. Fold the strip in a motion of 45° and upward, pressing with your fingers (DIAGRAM B2). Hold this fold with your finger, bring the strip down in line with the next edge, making a horizontal fold that aligns with the top edge of the quilt (DIAGRAM B3). Start sewing at $\frac{1}{4}$ " of the border, stitching all the layers. Do the same in the four corners of the quilt.
- Stop stitching before you reach the last 5 or 6 inches. Cut the threads and remove the quilt from under the machine presser foot. Lay the loose ends of the binding flat along the quilt edge, folding the ends back on themselves where they meet. Press them together to form a crease. Using this crease as the stitching line, sew the two open ends of the binding with right sides together (you can help yourself marking with a pencil if the crease is difficult to see).
- Trim seam to $\frac{1}{4}$ " and press open. Complete the sewing. Turn binding to back of the quilt, turn raw edge inside and stitch by hand using blind stitch.



XXXXXXXXXXXXXXXXXXXXXXXXXXXXXXXX

Congratulations & enjoy

XXXXXXXXXXXXXXXXXXXXXXXXXXXXXXXX



artgalleryfabrics.com

NOTE: While all possible care has been taken to ensure the accuracy of this pattern, We are not responsible for printing errors or the way in which individual work varies.

Please read instructions carefully before starting the construction of this quilt. If desired, wash and iron your fabrics before starting to cut.

© 2022 Courtesy of Art Gallery Quilts LLC. All Rights Reserved.