

WILD Keepsakes

QUILT DESIGNED BY AGFstudio

Woodland Keeper



FABRICS DESIGNED BY MAUREEN CRACKNELL



WKP79500
WILDWOOD NIGHTFALL



WKP79512
UNTAMED LUMINOUS



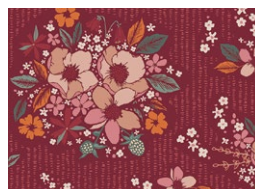
WKP79507
PETIT TWINKLESTAR RAY



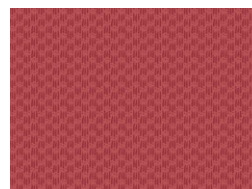
WKP79505
FLORAL KEEPSAKES SOFT



WKP79506
PALE INFLORESCENCE



WKP79515
FLORAL KEEPSAKES DUSK



WKP79502
UNTAMED SOMBER



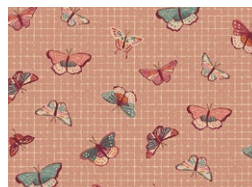
WKP79509
FOREST SECRETS



WKP79504
AWAKEN FOREST FERN



WKP79510
WILDWOOD DAYBREAK



WKP79508
FLUTTERING LATTICE



WILD Keepsakes

FINISHED SIZE | 80" x 80

FABRIC REQUIREMENTS

FABRICS LABELED AS FAT EIGHTHS (F8)
PRE CUTS SHOULD MEASURE 11"x18"

Fabric A	WKP79500	1 yd.
Fabric B	WKP79512	3 ⁷ / ₈ yd.
Fabric C	WKP79507	5 ⁸ / ₈ yd.
Fabric D	PE521	1 ¹ / ₂ yd.
Fabric E	WKP79505	1 ¹ / ₂ yd.
Fabric F	WKP79506	5 ⁸ / ₈ yd.
Fabric G	WKP79515	1 ¹ / ₂ yd.
Fabric H	WKP79502	3 ⁸ / ₈ yd.
Fabric I	WKP79509	F8.
Fabric J	WKP79504	3 ⁸ / ₈ yd.
Fabric K	PE472	3 ⁸ / ₈ yd.
Fabric L	WKP79510	F8.
Fabric M	PE502	3 ⁸ / ₈ yd.
Fabric N	PE463	3 ⁸ / ₈ yd.
Fabric O	WKP79508	1 yd.

BACKING FABRIC

PE502 7 1/2 yds (*Suggested*)

BINDING FABRIC

Fabric **O** WKP79508 (*Included*)

CUTTING DIRECTIONS

1/4" seam allowances are included.
WOF means width of fabric.

- Two (2) 16⁷/₈" squares from fabric **A**.
- Eight (8) 4¹/₂" squares from fabric **A**.
- Two (2) 10" squares from fabric **A**.
- Two (2) 16⁷/₈" squares from fabric **B**.
- Nine (9) 10" squares from fabric **B**.
- Four (4) 28¹/₂" x 4¹/₂" rectangles from fabric **B**.
- Four (4) 24¹/₂" x 4¹/₂" rectangles from fabric **B**.
- Eight (8) 12¹/₂" x 4¹/₂" rectangles from fabric **B**.
- Sixteen (16) 8¹/₂" x 4¹/₂" rectangles from fabric **B**.
- Forty eight (48) 4¹/₂" squares from fabric **B**.
- Three (3) 10" squares from fabric **C**.
- Twelve (12) 4¹/₂" squares from fabric **C**.
- Four (4) 10" squares from fabric **D**.
- One (1) 10" square from fabric **E**.
- Four (4) 8¹/₂" x 4¹/₂" rectangles from fabric **E**.
- Eight (8) 4¹/₂" squares from fabric **E**.
- Twelve (12) 8¹/₂" x 4¹/₂" rectangles from fabric **F**.
- Eight (8) 4¹/₂" squares from fabric **F**.
- Two (2) 10" squares from fabric **G**.
- Two (2) 4⁷/₈" squares from fabric **G**.
- Twelve (12) 4¹/₂" squares from fabric **G**.
- Two (2) 10" squares from fabric **H**.
- One (1) 10" square from fabric **I**.
- Eight (8) 4¹/₂" squares from fabric **J**.
- Four (4) 8¹/₂" x 4¹/₂" rectangles from fabric **J**.
- Two (2) 10" squares from fabric **K**.
- One (1) 10" square from fabric **L**.
- Eight (8) 4¹/₂" squares from fabric **M**.
- Four (4) 8¹/₂" x 4¹/₂" rectangles from fabric **M**.

- One (1) 10" square from fabric **N**.
- Four (4) 4½" squares from fabric **N**.
- Two (2) 4⅞" squares from fabric **O**.
- Twelve (12) 4½" squares from fabric **O**.
- Four (4) 8½" x 4½" rectangles from fabric **O**.
- Eight (8) 1½" x WOF strips from fabric **O** (binding).

CONSTRUCTION

Sew all rights sides together with ¼" seam allowance.

Magic 8 technique:

- Place one (1) 10" square from fabrics **A** and **B** right sides facing together.
- Draw a line diagonally corner to corner using a mechanical pencil or frixion pen.



DIAGRAM 1

- Stitch at ¼" from each side of the drawn lines.



DIAGRAM 2

- You will cut a horizontal line, vertical line, and on both diagonal lines. following the diagram below.

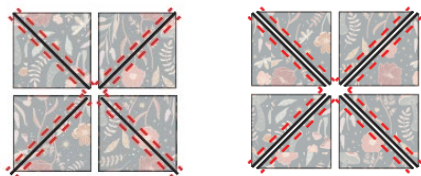


DIAGRAM 3

- Trim each HST to 4½" square. You will have a total of eight (8) HST.



DIAGRAM 4

- Repeat the same Magic 8 instructions for the following 10" squares of the following fabric combinations:

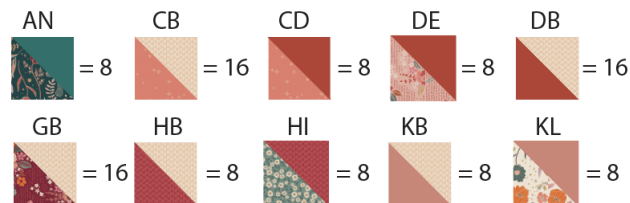


DIAGRAM 5

Half Square Triangle (HST) Construction:

- Take two (2) 4⅞" fabric squares .
- Draw a line diagonally corner to corner using a mechanical pencil or frixion pen.
- Stitch at ¼" from each side of the drawn lines.
- Cut the pieces apart along the marked diagonal line.
- Press and trim to a 4½" perfect square.

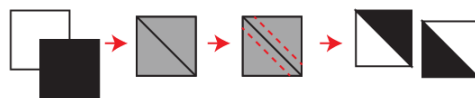


DIAGRAM 6

- Take one (1) 4⅞" square from fabrics **G** and **O** and follow the half square triangle construction creating two (2) **GO** hst's following the diagram below.
- Repeat the same construction in order to create a total of four (4) **GO** hst's following the diagram below.



DIAGRAM 7

- Join two (2) 16⅞" squares from fabric **A** and **B**.

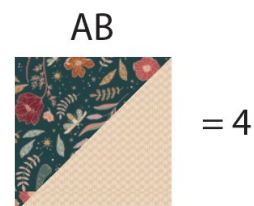


DIAGRAM 8

